



MARSHALLWHITE
ONE

504/38 Harold Street
Hawthorn East



"Essington"

Ultra stylish, luxuriously appointed and generously proportioned, this sensational light-filled apartment delivers a sophisticated urban lifestyle walking distance to the Rivoli, the Well, the junction, Fritsch Holzer park and trams and trains. Opening out to a full width balcony with wide entertaining terrace ideal for admiring the views over Camberwell Junction, the spacious living and dining room is served by a stunning gourmet kitchen boasting stone benches and Miele appliances including dishwasher. The two bright bedrooms with mirrored built in robes both also open to the balcony. The sleek fully tiled designer bathroom features a chocolate marble bench. Offering an ideal lifestyle for young professionals, this stunning apartment also features RC/air-conditioning, video intercom, Euro-laundry, store-room, secure lift access and secure basement car park.

504-38haroldstreet-hawthorneast.com 2 1 1

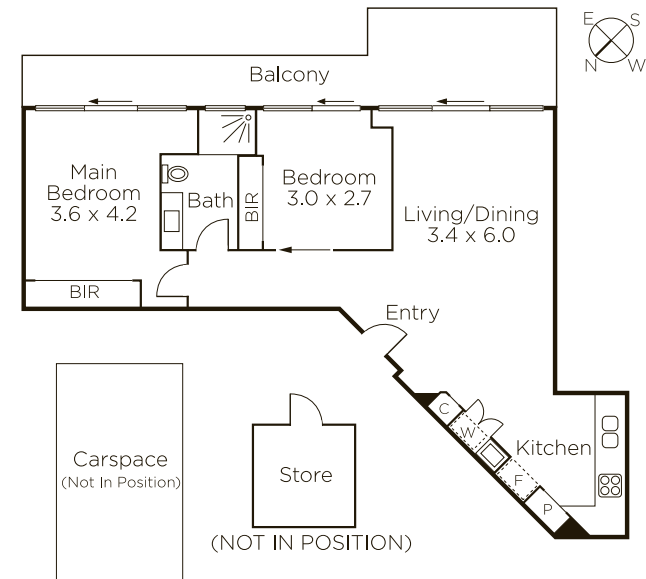
Auction Saturday 10th February at 10am

Bethany Wilkinson 0449 285 813

James Hill 0402 421 154

801 Glenferrie Road Hawthorn

9822 9999 mwone.com.au



MARSHALLWHITE
ONE

Disclaimer: Information provided is believed to be accurate as at the date of printing, no responsibility is taken for any errors or omissions. It is your responsibility to obtain independent, professional advice. Personal information collected from you is for security purposes to contact you should the property sell prior to auction. We may use this information to provide you with other real estate services including referrals to authorized financial services' providers. Visit our website at www.mwone.com.au for our privacy policy.