



MARSHALLWHITE

5 Miami Street  
Hawthorn East









## Art Deco Meets Contemporary Styling

Showcasing Early Modern Architectural and Art Deco styling this appealing two storey semi-detached home is a classic example of the perfect blend of contemporary interior design in a subtle period context. Offering stylish low-maintenance living together with spacious family accommodation befitting today's busy lifestyle demands which will appeal to young professionals and families; whilst ideally positioned close to popular Hawthorn and Camberwell amenities. The stylishly renovated and extended interior features wide oak floorboards, four bedrooms, downstairs main with BIRs, WIR and fully-tiled ensuite, three upstairs with a retreat and fully-tiled family bathroom. The lower living and dining areas with a cosy Heat 'n Glo fireplace also incorporate a study nook, smartly appointed kitchen with Bosch stainless steel appliances, CaesarStone and timber bench-tops plus an adjacent laundry and WC. All flowing through floor-to-ceiling doors to a deck and private courtyard garden. Delivering easy options for indoor/outdoor dining or entertaining family and friends. Other features include ducted heating & cooling, R/C air conditioner (living), Plantation Shutters, sprinkler system, and off-street parking.

4  2  1 

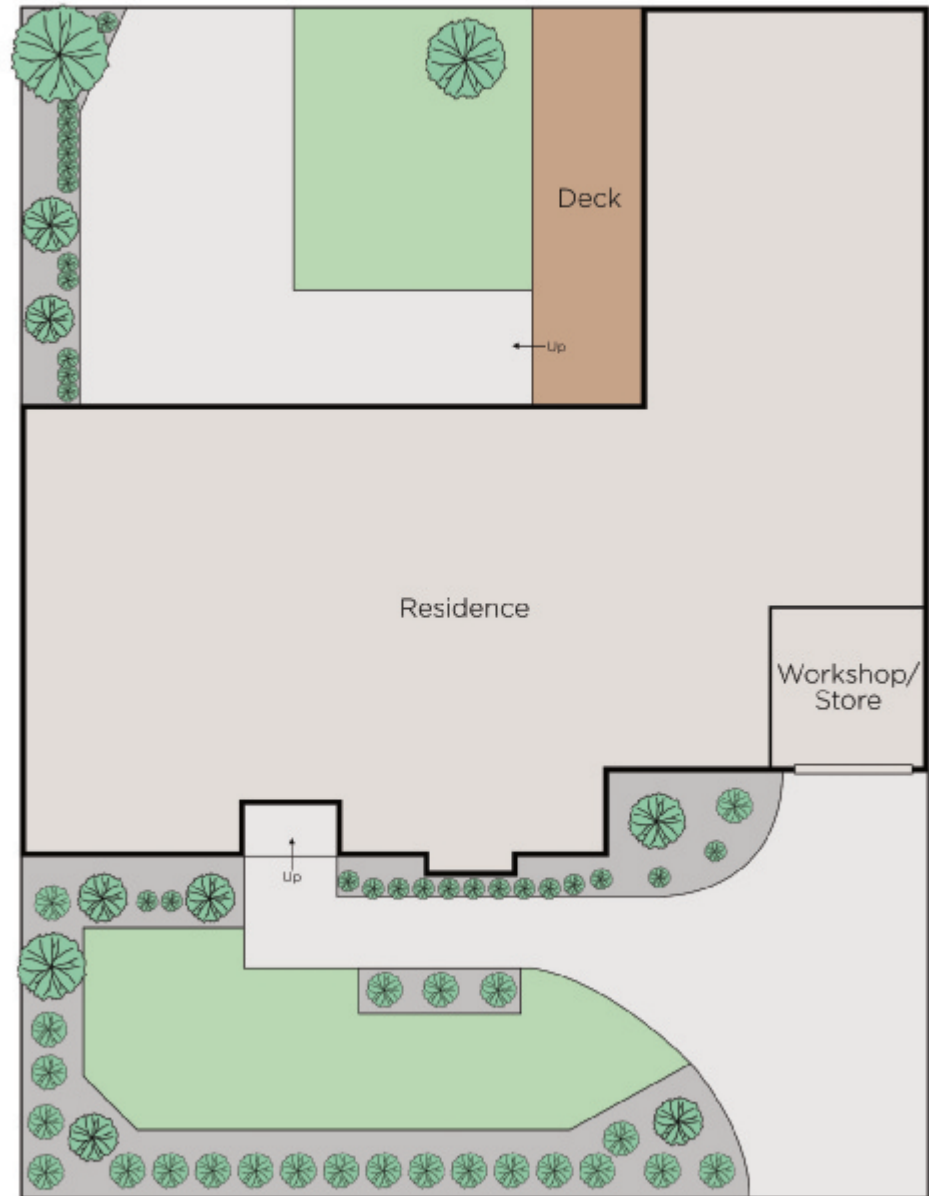
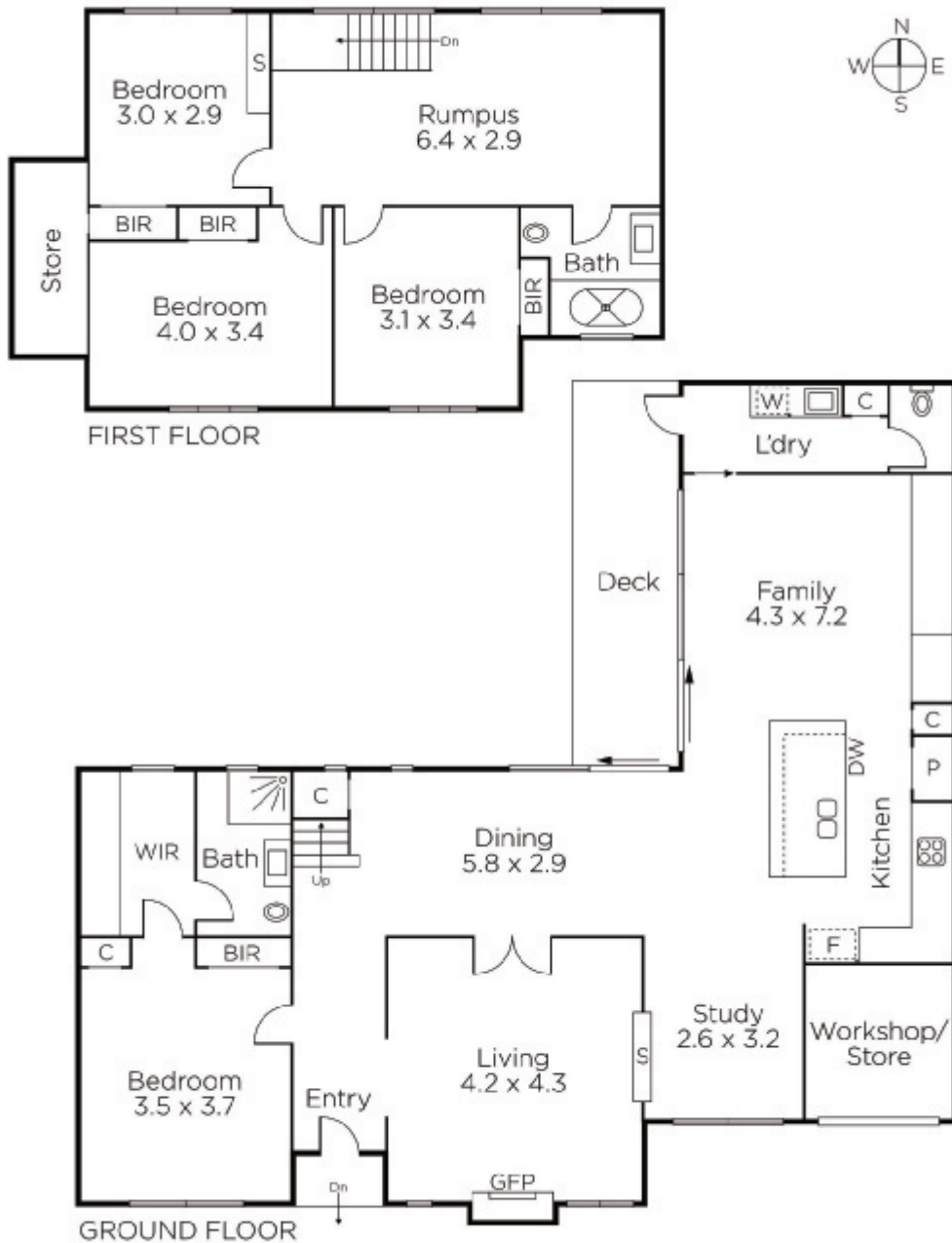
Auction Saturday 24th November at 9.30am

**James Tostevin**  
0417 003 333

**Charlie Tostevin**  
0431 713 205

  
**MARSHALLWHITE**

801 Glenferrie Road, Hawthorn



Disclaimer: Information provided is believed to be accurate as at the date of printing, no responsibility is taken for any errors or omissions. It is your responsibility to obtain independent, professional advice. Personal information collected from you is for security purposes and to contact you should the property sell prior to auction. We may use this information to provide you with other real estate services including referrals to authorised financial services' providers. Visit our website at [www.marshallwhite.com.au](http://www.marshallwhite.com.au) for our privacy policy.