




MARSHALLWHITE

5 Keys Avenue
Brighton East



Single-level Potential by the Park

Easy living one door from Landcox Park offers architect-designed space and a cul de sac address in the Gardenvale Primary School zone. Updated and light-filled, this three-bedroom and study home on 521 sqm approx is perfect for now and a bright future STCA. Two living areas offer smart zoning, and the family room features a pitched ceiling and garden views. There's a new kitchen with Caesarstone benchtops, updated family bathroom, main bedroom with ensuite, and signature features by architect John Witorz. Next door to one of Bayside's best parks, and short walk to Bay St's shops and transport.

5keysavenue-brightoneast.com

3 2 2

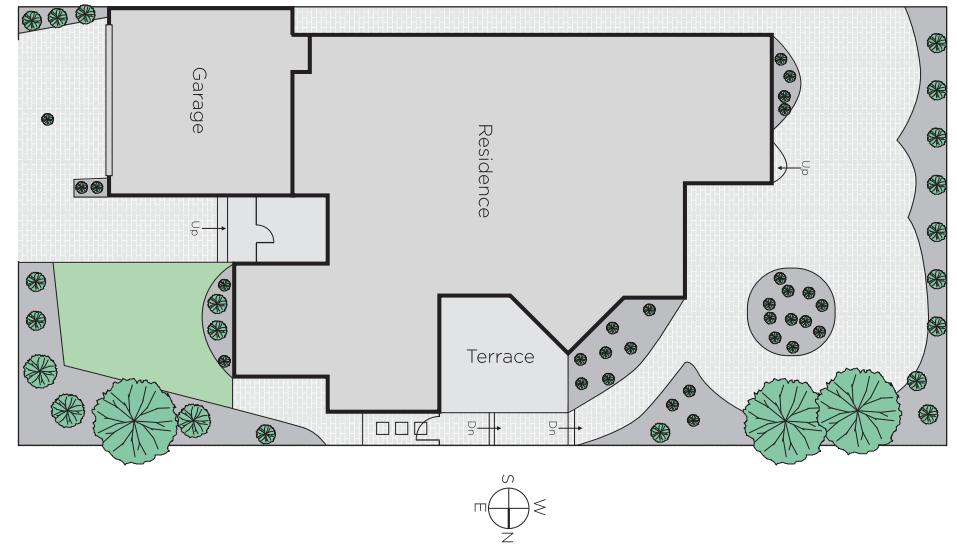
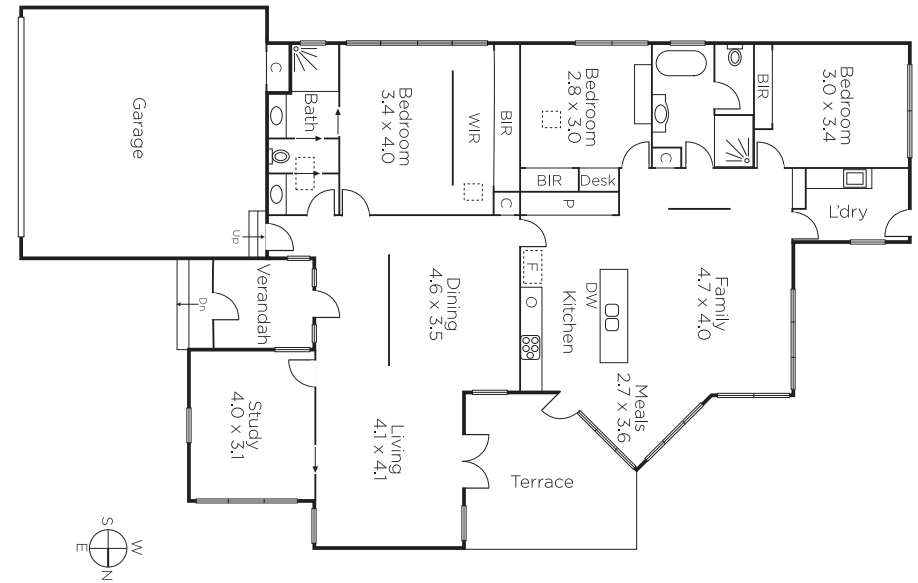
Auction Saturday 24th June at 12.30pm

Gerry Gordon 0418 144 000

Rui Shen 0450 790 615

225 Bay Street Brighton
marshallwhite.com.au


MARSHALLWHITE



Disclaimer: Information provided is believed to be accurate as at the date of printing, no responsibility is taken for any errors or omissions. It is your responsibility to obtain independent, professional advice. Personal information collected from you is for security purposes and to contact you should the property sell prior to auction. We may use this information to provide you with other real estate services including referrals to authorised financial services' providers. Visit our website at www.marshallwhite.com.au for our privacy policy.