



  
MARSHALLWHITE

5 Central Park Road  
Malvern East





## Family Excellence in the Gascoigne Estate

Beautifully set amidst magnificent landscaped gardens, the inspired renovation of this classic solid brick Edwardian residence has resulted in an absolutely stunning domain that luxuriously and fastidiously caters to every modern family requirement. The wide entrance hall featuring high ceilings introduces a refined study and gracious sitting room both with open fireplaces. Surrounded by north and west facing glass, the expansively proportioned living room and inviting dining area are on either side of a stunning Hampton's style gourmet kitchen with butler's pantry and wine room. The living areas open to a private north-facing hedged garden. A glorious downstairs main bedroom with marble ensuite, open fireplace and walk in robe, a second double bedroom with built in robe and designer ensuite and a third bathroom are matched upstairs by two additional bedrooms with robes and a chic marble bathroom. Desirably situated in the Gascoigne Estate close to schools, trams, Central Park, shops and cafes, this beautiful home also includes alarm, irrigation, roof storage, garden shed, 2 off street car-parks and auto gates.

[5centralparkroad-malverneast.com](http://5centralparkroad-malverneast.com)

4  4  2 

Auction Saturday 20th May at 1.30pm

Rae Tomlinson 0418 336 234

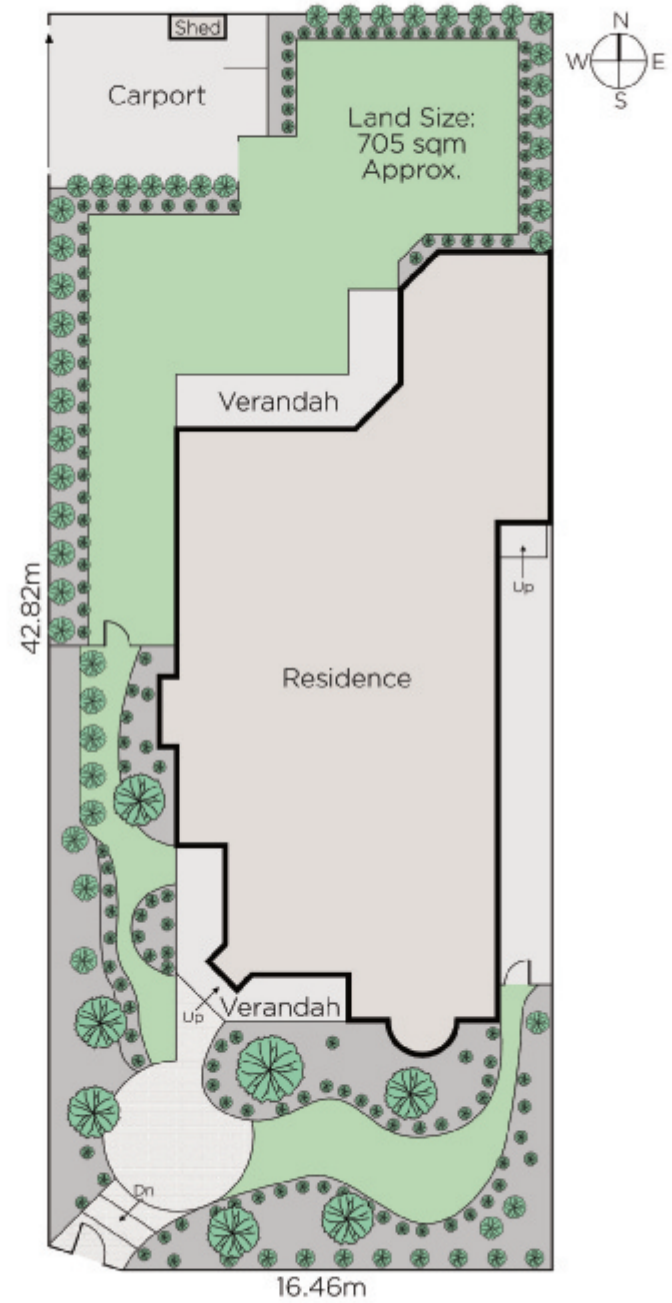
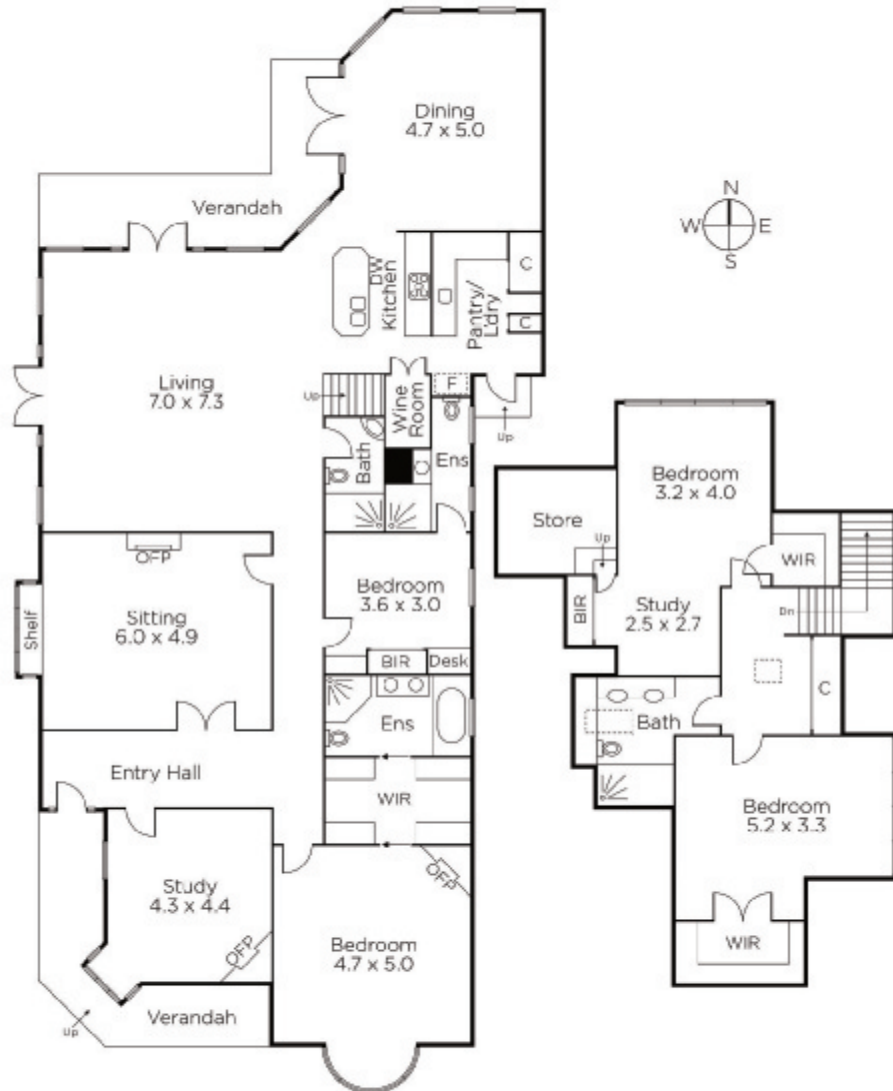
Heather Elder 0413 273 079

James Tomlinson 0408 350 684

1111 High Street Armadale

[marshallwhite.com.au](http://marshallwhite.com.au)

  
MARSHALLWHITE



Disclaimer: Information provided is believed to be accurate as at the date of printing, no responsibility is taken for any errors or omissions. It is your responsibility to obtain independent, professional advice. Personal information collected from you is for security purposes and to contact you should the property sell prior to auction. We may use this information to provide you with other real estate services including referrals to authorised financial services' providers. Visit our website at [www.marshallwhite.com.au](http://www.marshallwhite.com.au) for our privacy policy.