



MARSHALLWHITE

48 Winton Road
Ashburton



Centrally Located with Family Focus

Idyllically situated near Gardiner's Creek, East Malvern station, Ashburton Village, freeway access & schools, this captivating c1950's residence has family appeal in abundance. Brilliantly zoned, it is enhanced by a renovation that highlights indoor-outdoor living & entertaining. Timber floors flow through the sitting room, dining room, gourmet kitchen & expansive living room opening to a series of decks, pool and pool house. The main bedroom with robe & en-suite is complemented by four additional bedrooms & bathroom. Includes 3rd shower, powder-room, hydronic heating, laundry & off street parking. Land: 700sqm (approx.)

5 3 4

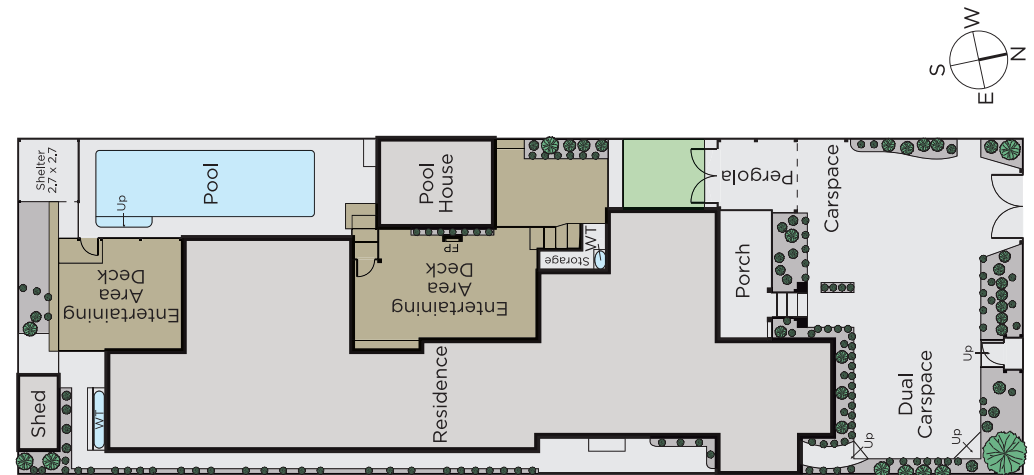
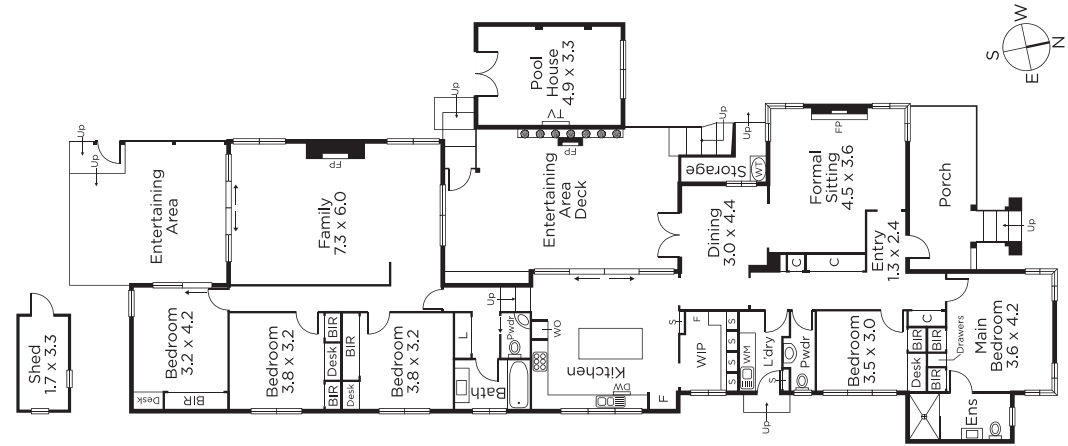
Auction Saturday 16th February at 12.30pm

John Manton
0411 444 930

Jack Moss
0439 378 954

MARSHALLWHITE

1111 High Street, Armadale



Disclaimer: Information provided is believed to be accurate as at the date of printing, no responsibility is taken for any errors or omissions. It is your responsibility to obtain independent, professional advice. Personal information collected from you is for security purposes and to contact you should the property sell prior to auction. We may use this information to provide you with other real estate services including referrals to authorised financial services providers. Visit our website at www.marshallwhite.com.au for our privacy policy.