

18.3m



620sqm
(approx.)

33.9m


MARSHALLWHITE

48 Sargood Street
Hampton



Corner Potential and Original Character

Two street frontages in a prized Hampton location and a home full of potential and spaciousness are poised for a bright future on 620 square metres approx. It's ready for a revival to showcase a fine array of untouched period features, four bedrooms and a separate study/playroom, living and dining areas, or to make way for new luxury STCA. Outstanding location in the Sandringham Primary School zone is close to the cafes and shops that Hampton Street is famous for, just a few blocks from Thomas Street Reserve, and minutes from the beach and trains.

4 1 2

Auction Saturday 25th August at 11.30am

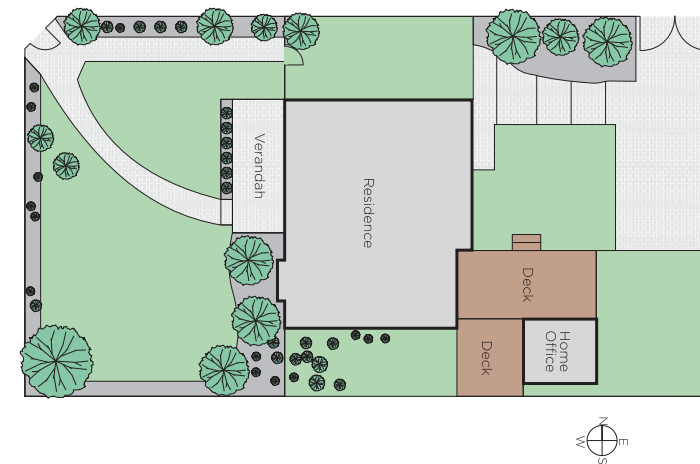
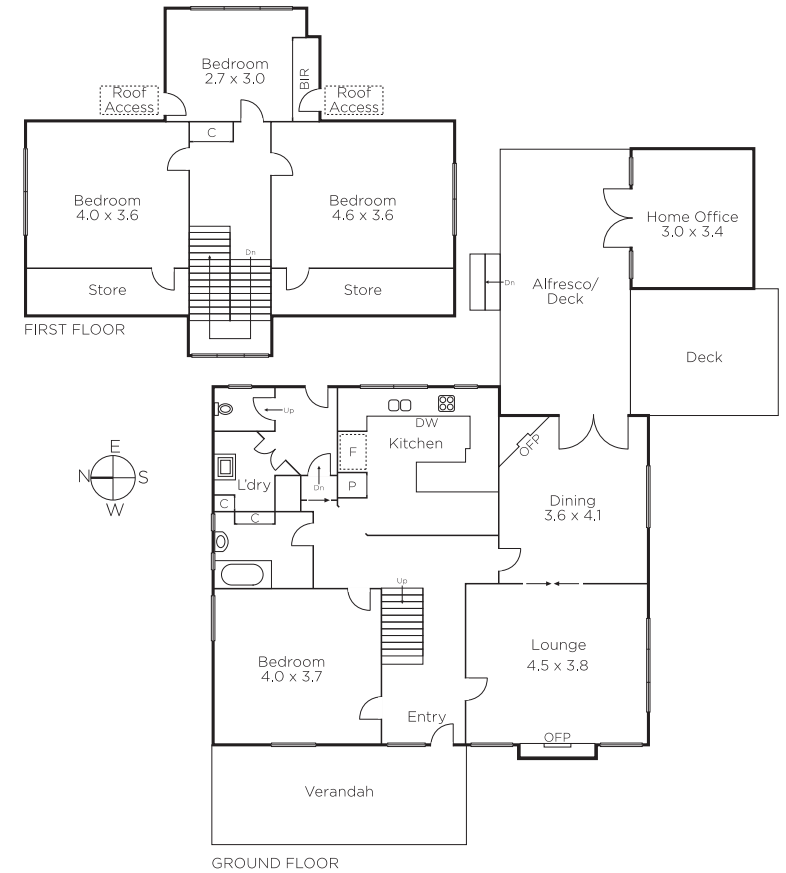
Jack Johnstone
0426 241 841

Andrew Campbell
0419 366 545

Andre O'Brien
0437 917 007


MARSHALLWHITE

225 Bay Street, Brighton



Disclaimer: Information provided is believed to be accurate as at the date of printing, no responsibility is taken for any errors or omissions. It is your responsibility to obtain independent, professional advice. Personal information collected from you is for security purposes and to contact you should the property sell prior to auction. We may use this information to provide you with other real estate services including referrals to authorised financial services providers. Visit our website at www.marshallwhite.com.au for our privacy policy.