



  
MARSHALLWHITE

47 View Street  
Mont Albert





## With a View to the Future

The premier location, period charm and superb proportions that define this character-rich single level residence highlight its exciting potential for a renovation and extension. It's superb 624sqm approx. northwest allotment is the ideal new home site (STCA). The wide central hall leads to a spacious sitting room, dining room, capable kitchen and light-filled living/dining room opening to the private northwest garden and studio. Two double bedrooms (robes) are complemented by an original bathroom. Desirably situated walking distance to Mont Albert station, Hamilton and Balwyn Villages and schools.

47viewstreet-montalbert.com

3 2 2

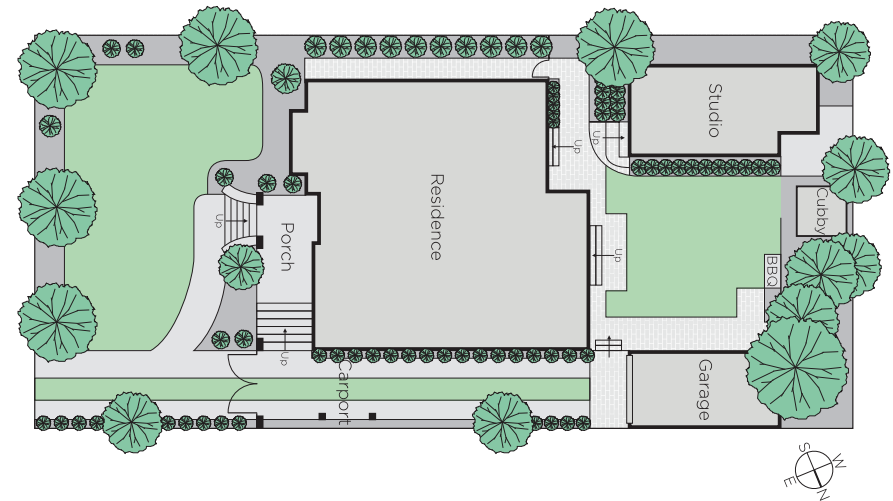
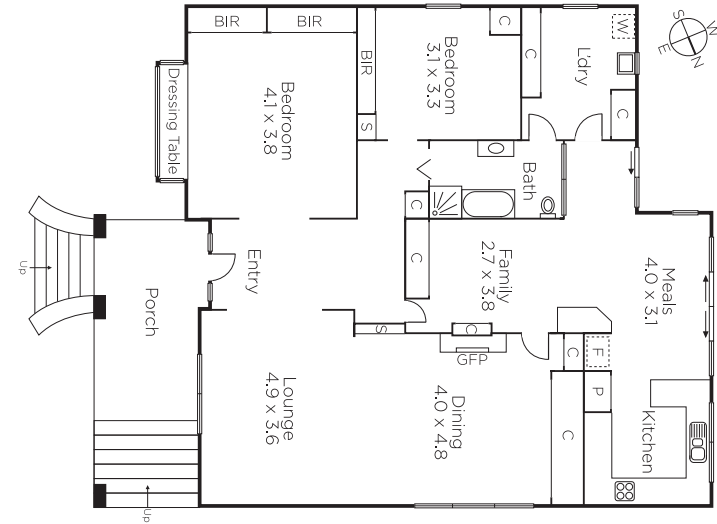
Auction Saturday 20th May at 10.30am

Stuart Evans 0402 067 710

Grayson Rayner 0433 654 744

801 Glenferrie Road Hawthorn  
marshallwhite.com.au

  
MARSHALLWHITE



Disclaimer: Information provided is believed to be accurate as at the date of printing, no responsibility is taken for any errors or omissions. It is your responsibility to obtain independent, professional advice. Personal information collected from you is for security purposes and to contact you should the property sell prior to auction. We may use this information to provide you with other real estate services including referrals to authorised financial services' providers. Visit our website at [www.marshallwhite.com.au](http://www.marshallwhite.com.au) for our privacy policy.