




MARSHALLWHITE

47 Tennyson Street
Malvern East





Serene, Stylish, Single Level Appeal

Irresistible lifestyle appeal situated near Central Park, recognised primary & secondary schools and Waverley Rd shops, cafes and trams, this magnificent Edwardian home exudes charm, character and an abundance of space. Original character is enhanced with a state-of-the-art renovation. Evocative dark Kauri Pine floors and ornate ceilings feature through the wide entrance hall, beautiful main bedroom with stylish en-suite and built in robes, two further double bedrooms with open fireplaces and built in robes, a fitted study or possible 4th bedroom and second sleek modern bathroom. The dramatic extension highlighted by soaring timber lined vaulted ceilings and dark Spotted Gum floors accommodates the stylish European kitchen including expansive concrete benches and impressively spacious living and dining room opening through large industrial style metal framed windows to a covered BBQ deck and private north-west facing garden. Exuding a wonderful inviting ambience and boasting Rinnai & Nobo heaters, cooling, double glazing, Euro-laundry, solar panels, water tank, irrigation, ample storage, garden shed and off street parking for 2 cars.

47tennysonstreet-malverneast.com

3  2  2 

Auction Saturday 17th February at 1.30pm

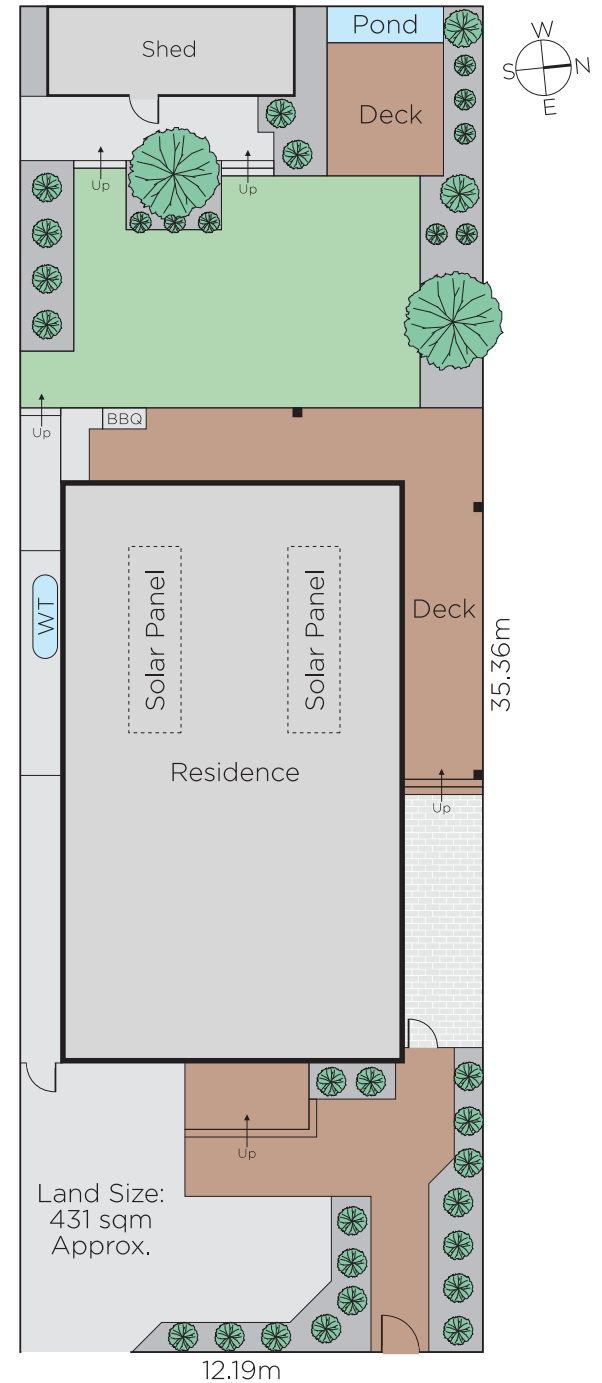
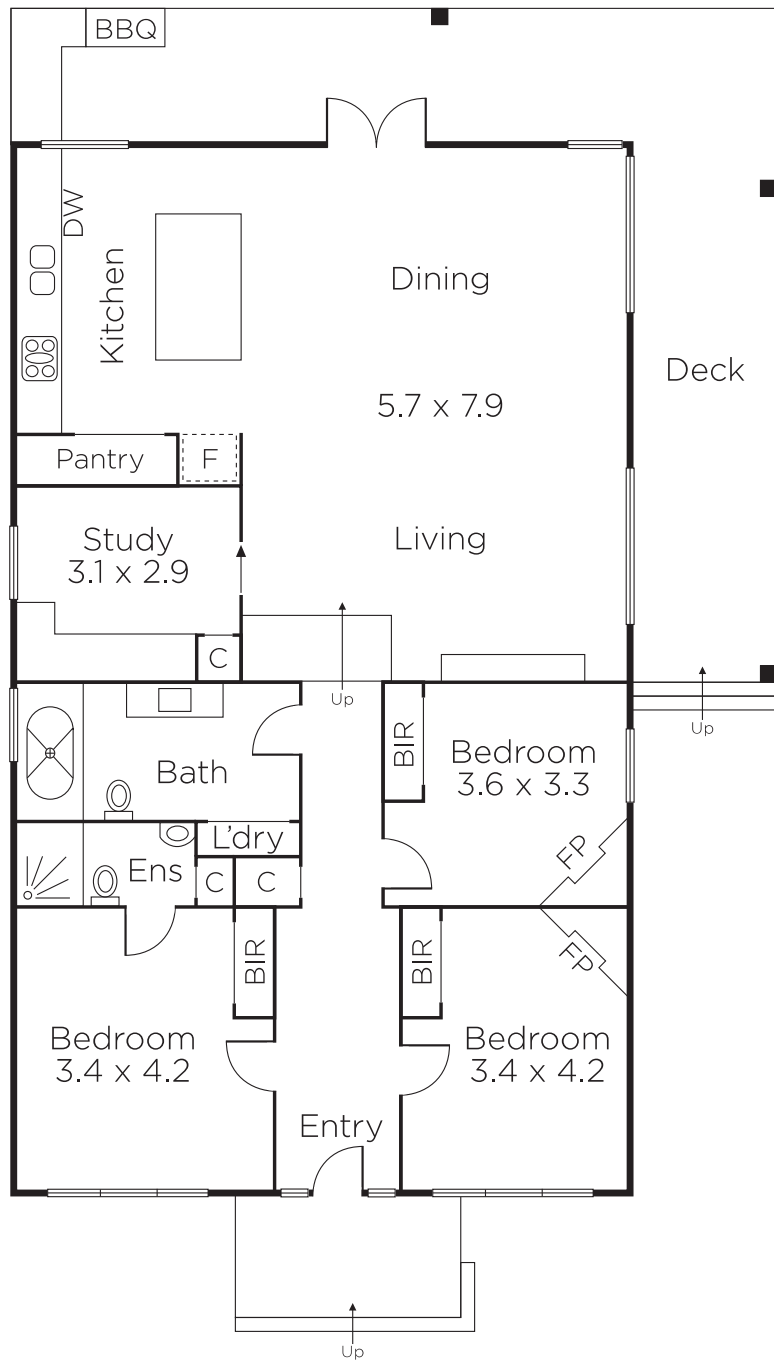
Daniel Wheeler
0411 676 058

Justin Krongold
0403 163 355

Clare Moloney
0401 546 441


MARSHALLWHITE

1111 High Street, Armadale



Disclaimer: Information provided is believed to be accurate as at the date of printing, no responsibility is taken for any errors or omissions. It is your responsibility to obtain independent, professional advice. Personal information collected from you is for security purposes and to contact you should the property sell prior to auction. We may use this information to provide you with other real estate services including referrals to authorised financial services' providers. Visit our website at www.marshallwhite.com.au for our privacy policy.