




MARSHALLWHITE

47 Howe Crescent
South Melbourne





'HAZELWOOD TERRACE' c1864-65

A National Trust of Australia icon, 'HAZELWOOD TERRACE' is a magnificent example of the Italianate Victorian era, built in 1864-1865 to the design of prominent architect Charles Webb. Its significant heritage integrity is introduced by grand exterior aesthetics, a striking façade and interiors that showcase the hallmarks of the era. Refined interiors include elegant formal sitting and dining rooms with dual marble open fireplaces and soaring ceilings, preceding open -plan family living, sky lit dining and a central kitchen equipped with Blanco/Miele appliances. French doors extend to a garden of impressive depth and parking via rear right of way. Upstairs three bedrooms and a children's study/retreat (or four; one currently converted to ensuite/WIRs) include a substantial main with balcony access. Lock up garage. Hydronic heating. Security. This tightly held residence is now poised for immediate enjoyment or contemporary refinement, STCA, in a position loaded with lifestyle advantages.

47howecrescent-southmelbourne.com

3  2  1 

Auction Saturday 27th May at 2.30pm

Adrian Wood 0404 861 508

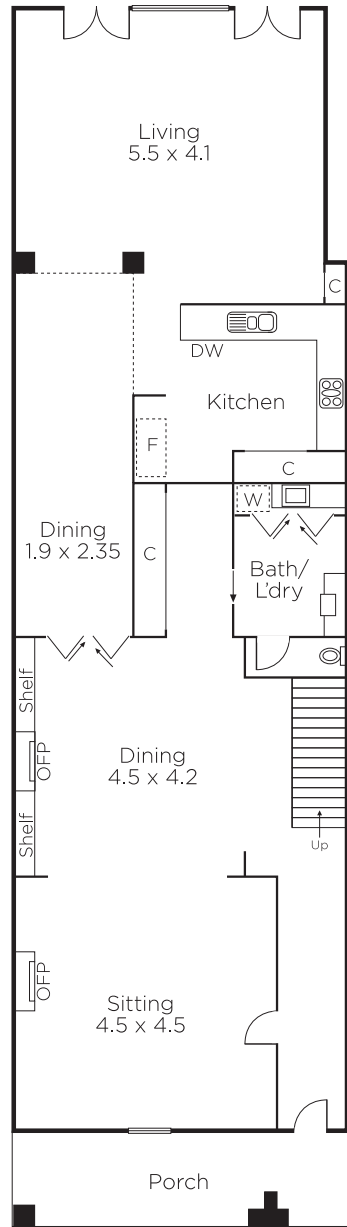
Damian O'Sullivan 0418 566 916

Sarah Carey 0420 246 200

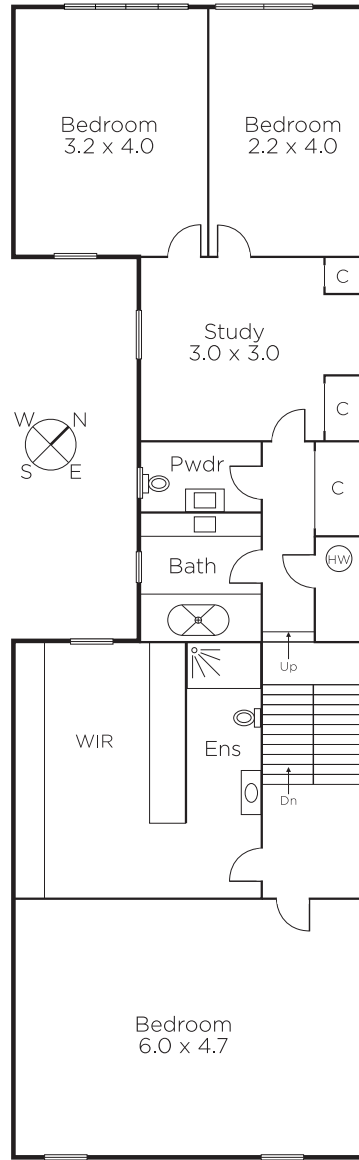
101 Dundas Place Albert Park

marshallwhite.com.au

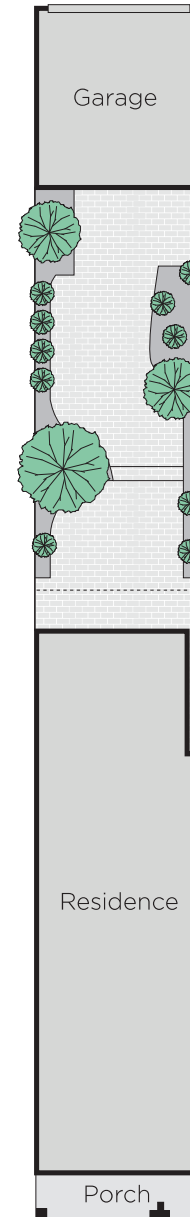

MARSHALLWHITE



GROUND FLOOR



FIRST FLOOR



Disclaimer: Information provided is believed to be accurate as at the date of printing, no responsibility is taken for any errors or omissions. It is your responsibility to obtain independent, professional advice. Personal information collected from you is for security purposes and to contact you should the property sell prior to auction. We may use this information to provide you with other real estate services including referrals to authorised financial services' providers. Visit our website at www.marshallwhite.com.au for our privacy policy.