




MARSHALLWHITE



47 Finch Street
Malvern East





Family Perfection in the Gascoigne Estate

Enviably situated in a premier Gascoigne Estate street close to schools, Central Park, trams and shops, this absolutely stunning solid brick period residence's unforgettable indoor and spectacular outdoor dimensions exceed all expectations in terms of style, space and family flexibility. Framed by glorious landscaped gardens, the wide entrance hall featuring high ceilings and dark timber floors introduces a captivating sitting room with open fireplace, gorgeous dining room and impressively spacious study. A sublime gourmet kitchen boasting stone benches, butler's pantry and European appliances and an expansive living room with gas fireplace open to the beautiful private northwest garden with solar heated pool and large entertaining deck shaded by a magnificent 100 year old oak tree. Light-filled accommodation upstairs comprises the main bedroom with designer en-suite, walk in robe and open fire, four additional double bedrooms with built in robes, a retreat and two stylish bathrooms. Designed with every family demand superbly met, it also includes alarm, remote blinds, powder-room, laundry with school bag drop, auto irrigation, auto gates and internally accessed garage.

5  3  2 

Auction Saturday 8th December at 10.30am

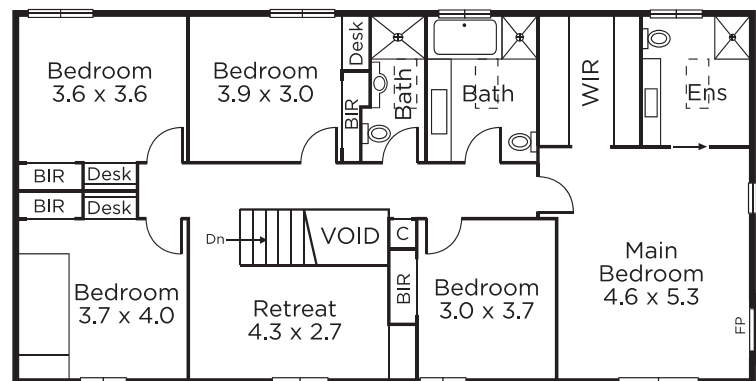
Andrew Hayne
0418 395 349

Fiona Ansell-Jones
0410 325 240

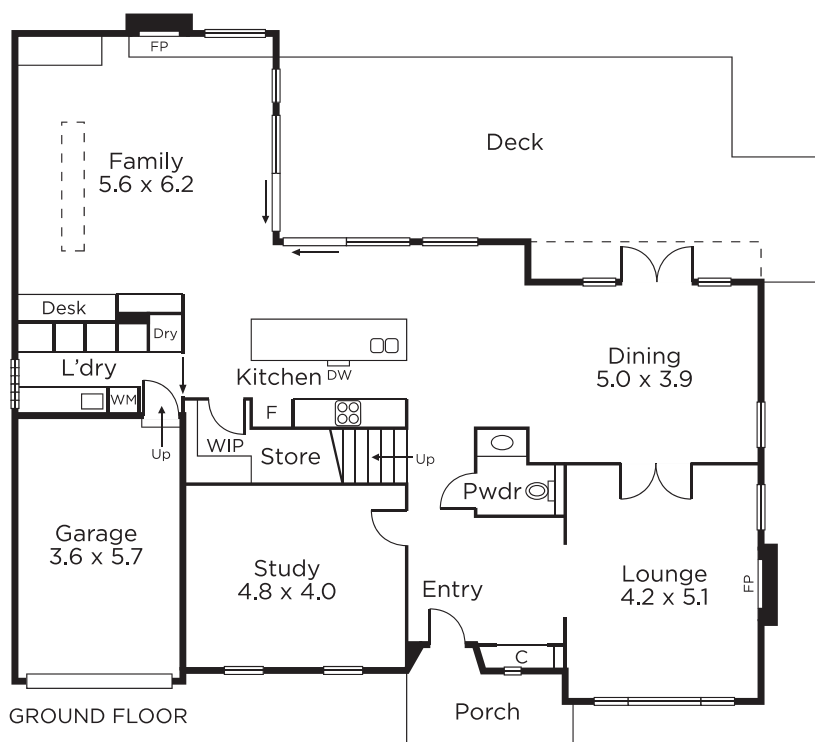
Jack Moss
0439 378 954


MARSHALLWHITE

1111 High Street, Armadale



FIRST FLOOR



GROUND FLOOR

