




MARSHALLWHITE

47 Fakenham Road
Ashburton



Period Charm with Modern Comfort

Directly opposite Ashburton Park, this captivating family home has been updated for modern convenience and comfort whilst retaining period charm. Offering a stately entrance hall, a formal lounge (OFP), generous master bedroom (WIR and ensuite), three further bedrooms, laundry, separate toilet, updated bathroom with spa and an open plan living/dining domain incorporating a gourmet kitchen. An undercover deck overlooks the north facing backyard. Highlights include heating, air conditioning, garage and multiple car parking. Close to Ashburton Village, schools and transport.

47fakenhamroad-ashburton.com

4 2 2

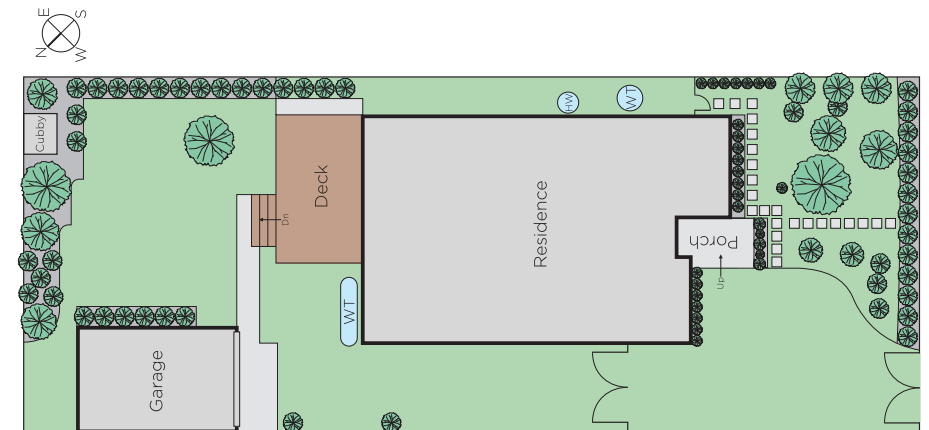
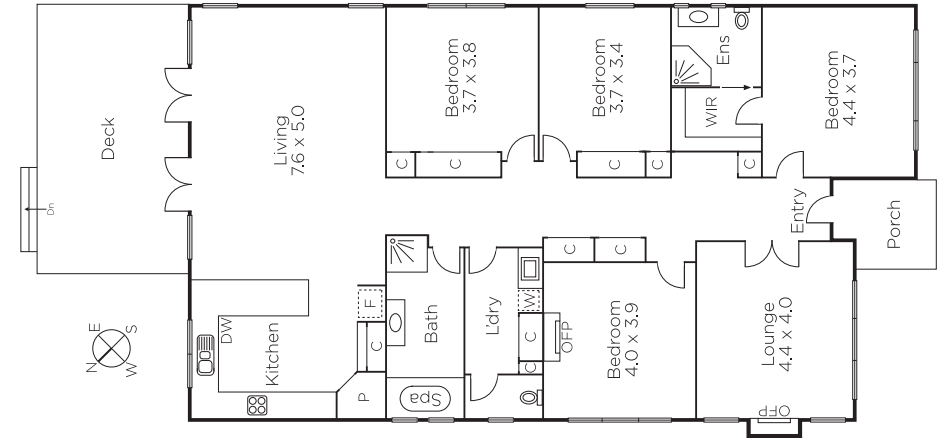
Auction Saturday 25th November at 1.30pm

Zali Reynolds 0422 576 049

Daniel Wheeler 0411 676 058

801 Glenferrie Road Hawthorn
marshallwhite.com.au


MARSHALLWHITE



Disclaimer: Information provided is believed to be accurate as at the date of printing, no responsibility is taken for any errors or omissions. It is your responsibility to obtain independent, professional advice. Personal information collected from you is for security purposes and to contact you should the property sell prior to auction. We may use this information to provide you with other real estate services including referrals to authorised financial services' providers. Visit our website at www.marshallwhite.com.au for our privacy policy.