



MARSHALLWHITE

47 Chadstone Road
Malvern East



Outstanding Opportunity and Location

Enviably situated opposite Treyvaud Memorial Park and moments to Chadstone, Malvern Valley Village, schools, East Malvern station and freeway access, this charming brick period residence set within a substantial 690sqm approx. west-facing allotment represents a significant opportunity to renovate, rebuild or develop (STCA). Timber floors and high ceilings define the central hall, generous living room, equally spacious dining room, a light-filled retreat and well appointed kitchen. Two well-proportioned bedrooms share a bathroom. Perfect for now while considering the options, it includes a laundry and garage.

47chadstoneroad-malverneast.com

3 1 2

Auction Saturday 26th May at 11.30am

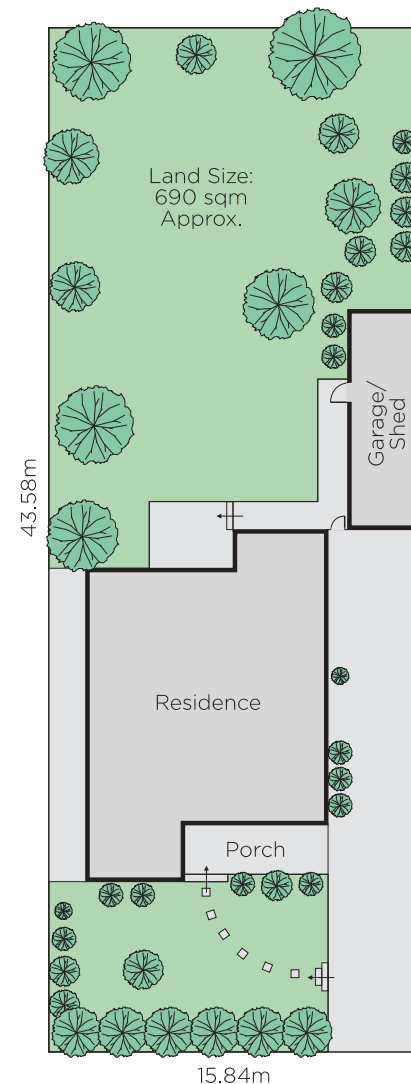
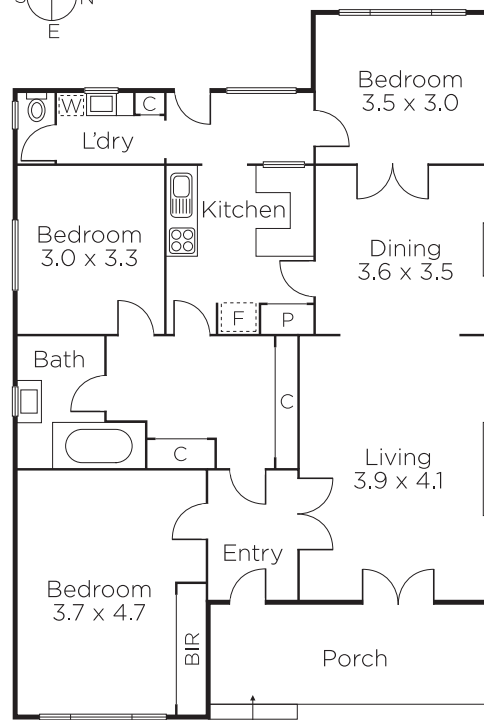
Daniel Wheeler
0411 676 058

Clare Moloney
0401 546 441

Justin Krongold
0403 163 355


MARSHALLWHITE

1111 High Street, Armadale



Disclaimer: Information provided is believed to be accurate as at the date of printing, no responsibility is taken for any errors or omissions. It is your responsibility to obtain independent, professional advice. Personal information collected from you is for security purposes and to contact you should the property sell prior to auction. We may use this information to provide you with other real estate services including referrals to authorised financial services providers. Visit our website at www.marshallwhite.com.au for our privacy policy.