




MARSHALLWHITE

47 Alfred Road
Glen Iris

4





"Roselea" - c1886

The totally captivating block-fronted façade of this glorious c1886 Victorian residence is matched inside by recently refurbished dimensions that showcase an impressive blend of unforgettable period elegance and the latest designer style.

Dark Baltic pine floors flow through the wide arched hallway to a beautiful sitting room with open fireplace, high ceilings and a bay window. The gorgeous main bedroom with open fireplace, stylish en-suite and built in robe is accompanied by two additional double bedrooms with built in robes, a retreat or fourth bedroom and a chic designer bathroom. The sleek state of the art Miele kitchen with stone benches and the expansive living and dining room open to a very deep northeast facing established garden.

Enviably situated metres from Hartwell Reserve and close to Leo's Supermarket, Burwood station, trams, Ashburton Village and schools, this stunning home also includes alarm, hydronic heating, laundry, irrigation, garden shed, auto gates and carport. Land size: 744sqm (approx.)

47alfredroad-gleniris.com

4  2  2 

Auction Saturday 13th May at 2.30pm

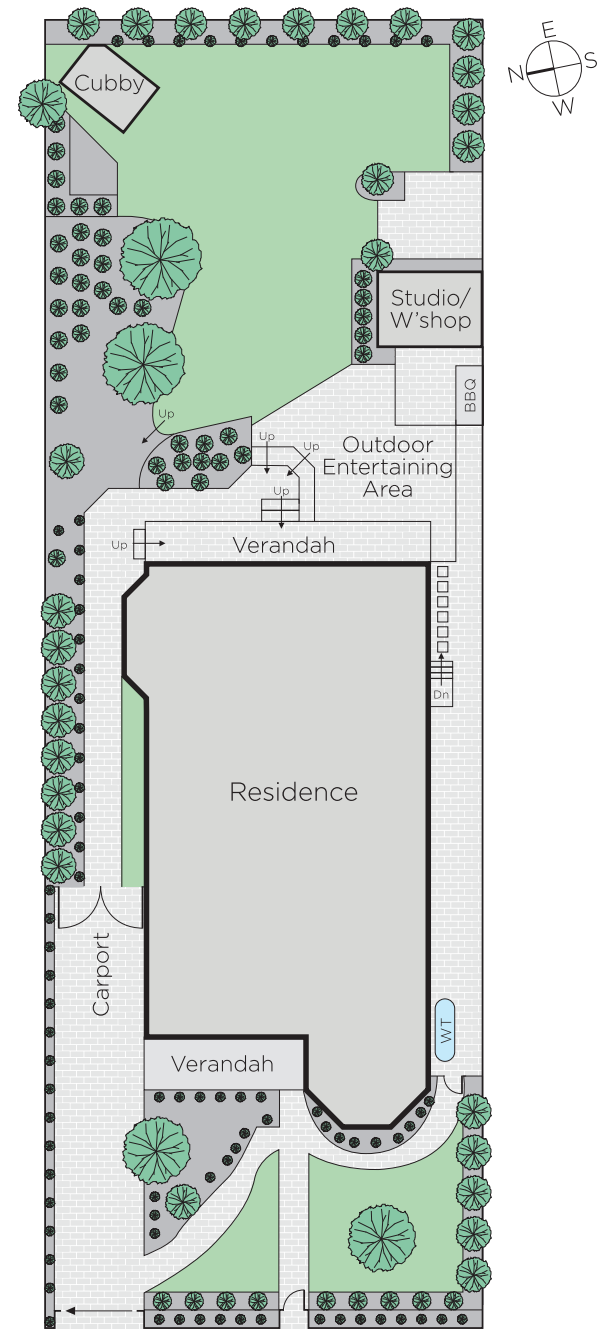
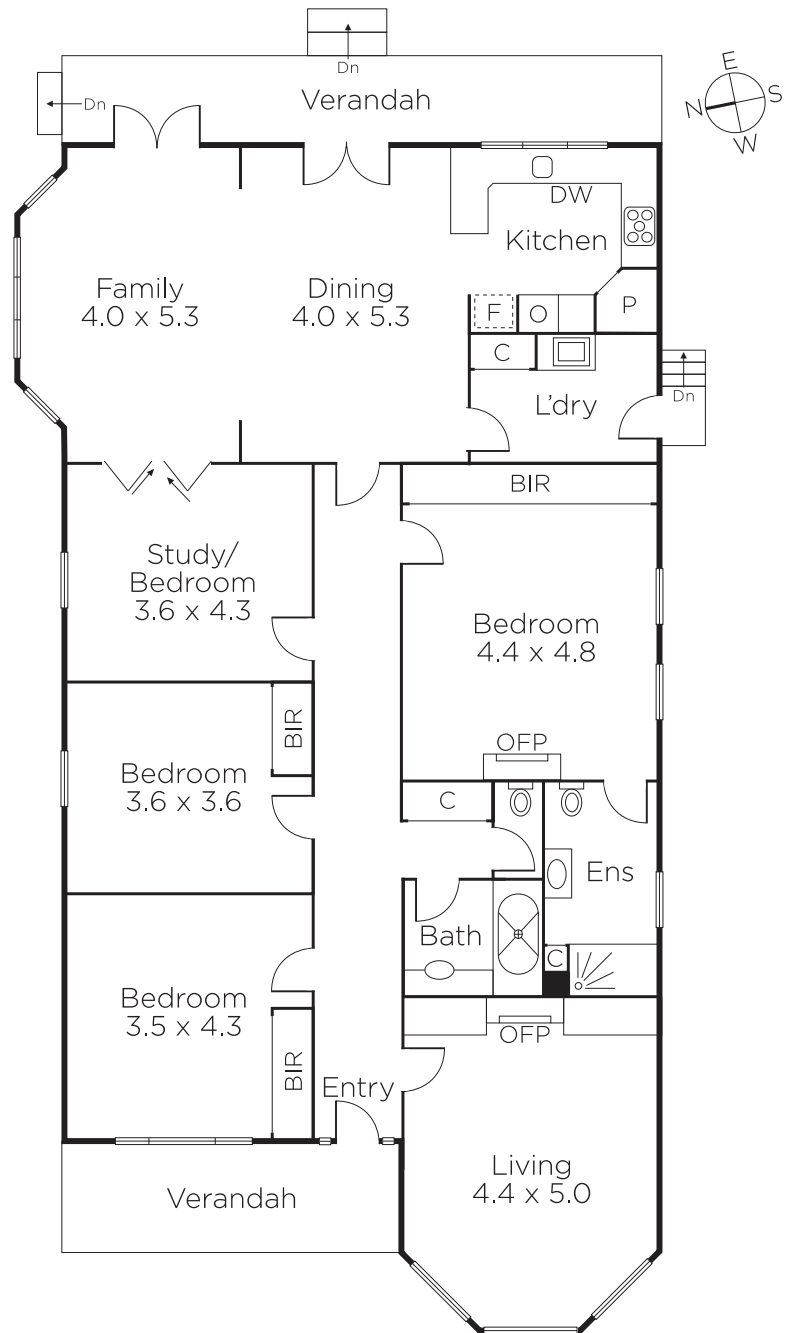
Stuart Evans 0402 067 710

Duane Wolowiec 0418 567 581

801 Glenferrie Road Hawthorn

marshallwhite.com.au


MARSHALLWHITE



Disclaimer: Information provided is believed to be accurate as at the date of printing, no responsibility is taken for any errors or omissions. It is your responsibility to obtain independent, professional advice. Personal information collected from you is for security purposes and to contact you should the property sell prior to auction. We may use this information to provide you with other real estate services including referrals to authorised financial services' providers. Visit our website at www.marshallwhite.com.au for our privacy policy.