



  
MARSHALLWHITE

46 Stuart Street  
Armadale





## Period Perfection in Prized Location

In a pocket highly coveted for its immediate proximity to High Street's shops and restaurants, Union Street park, Armadale station and schools, this glorious double fronted Victorian residence's exceptionally generous and stylishly presented indoor dimensions are more than matched by its spectacularly deep landscaped garden of 884sqm (approx.) and pool setting. An impressive double arched hallway featuring Baltic pine floors introduces an elegant sitting room with marble fireplace, the beautiful main bedroom with marble fireplace, four additional double bedrooms, a study with open fire and two stylish bathrooms. Streaming with natural light and featuring timber floors, the expansive living and dining room with a gourmet Miele kitchen boasting stone benches opens through bi-fold doors to the private leafy northeast garden with pool and entertaining terraces. Superbly appointed with plantation shutters, alarm, video intercom, laundry, irrigation, auto gates and off street parking for 2 cars.

[46stuartstreet-armadale.com](http://46stuartstreet-armadale.com)

4  2  2 

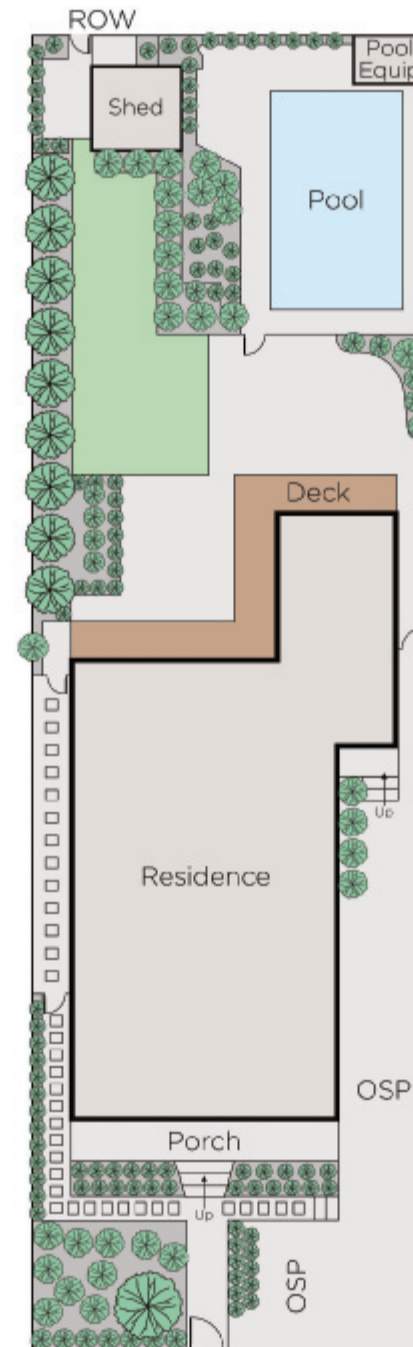
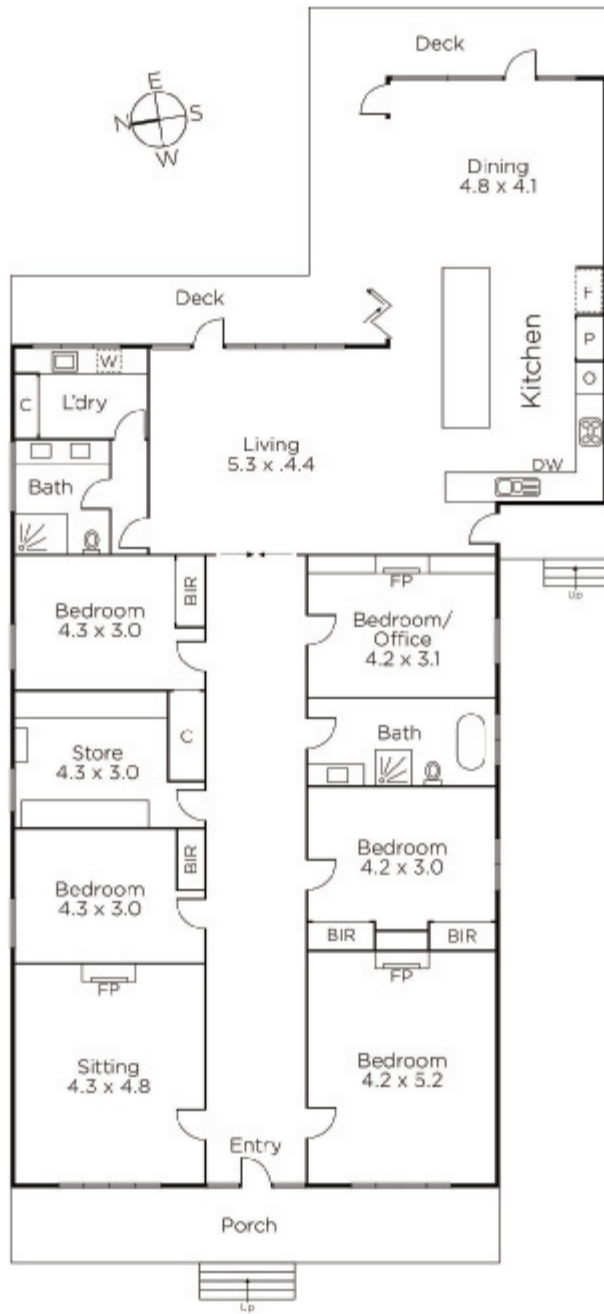
Auction Saturday 17th March at 11.30am

**Marcus Chiminello**  
0411 411 271

**Nicole French**  
0417 571 505

  
MARSHALLWHITE

1111 High Street, Armadale



Disclaimer: Information provided is believed to be accurate as at the date of printing, no responsibility is taken for any errors or omissions. It is your responsibility to obtain independent, professional advice. Personal information collected from you is for security purposes and to contact you should the property sell prior to auction. We may use this information to provide you with other real estate services including referrals to authorised financial services' providers. Visit our website at [www.marshallwhite.com.au](http://www.marshallwhite.com.au) for our privacy policy.