

20.28m



1316sqm
(approx.)
GRZ4

59.80m

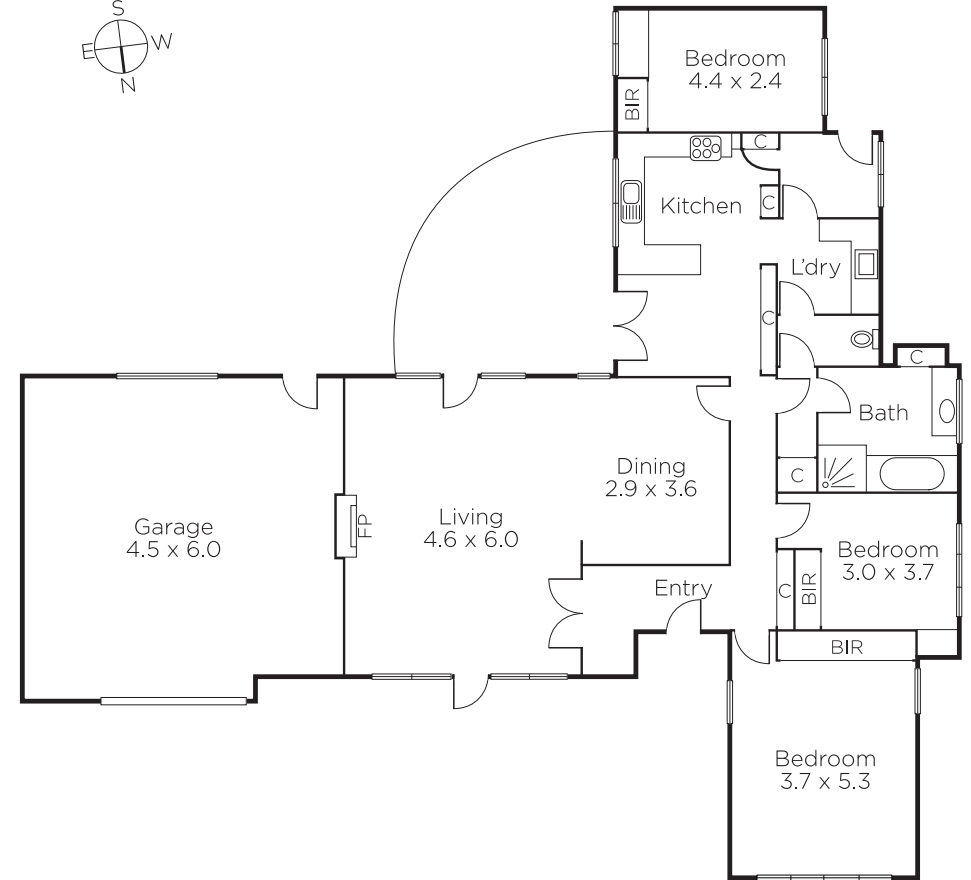
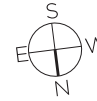
71.77m

23.76m

PERMIT FOR 7 TOWNHOUSES APPROVED


MARSHALLWHITE

46 Kenmare Street
Mont Albert



Outstanding Opportunity with Approved Plans

In a premier location close to a range of amenities including schools, Whitehorse Rd trams, Mont Albert Reserve, Balwyn East Village and Box Hill Centro, this substantial 1,316sqm approx. allotment offers an exceptional development opportunity. Zoned GRZ4, it is complete with approved plans and permits to build 7 luxury town residences. Designed by Ewan Leaf architects, the stunning 4 bedroom contemporary residences will feature the finest finishes and state of the art luxuries including individual lifts. Currently occupied by a comfortable period home, ideal to rent out before building commences.

46kenmarestreet-montalbert.com



Auction Saturday 25th November at 11.30am

Shamit Verma 0401 137 597

Sophie Su 0425 270 125

Ross Stryker 0401 318 772

801 Glenferrie Road Hawthorn

marshallwhite.com.au



MARSHALLWHITE

Disclaimer: Information provided is believed to be accurate as at the date of printing, no responsibility is taken for any errors or omissions. It is your responsibility to obtain independent, professional advice. Personal information collected from you is for security purposes and to contact you should the property sell prior to auction. We may use this information to provide you with other real estate services including referrals to authorised financial services' providers. Visit our website at www.marshallwhite.com.au for our privacy policy.