



  
MARSHALLWHITE

46 Karma Avenue  
Malvern East





## Definitive Spanish Mission Charm

Defined by captivating Spanish Mission architecture inside and out, this glorious single level solid brick c1924 family residence is superbly situated on a deep north oriented corner allotment close to schools, parks, East Malvern station, Waverley Rd shops and Chadstone.

The evocative interior features rich timber floors, ornate ceilings, leadlight windows and timber detailing through the central entrance hall, elegant sitting room with open fireplace and formal dining room also with an open fireplace. A well appointed separate kitchen with an Ilve oven and generous family room open to the deep private northeast garden with double garage accessed from Warida Ave. The three gorgeous double bedrooms, all with built in robes, are accompanied by two bathrooms.

Perfect for now while also offering scope to extend, it includes an alarm, Euro-laundry, garden shed and irrigation. Land size: 660sqm approx.

[46karmaavenue-malverneast.com](http://46karmaavenue-malverneast.com)

3  2  2 

Auction Saturday 19th August 1.30pm

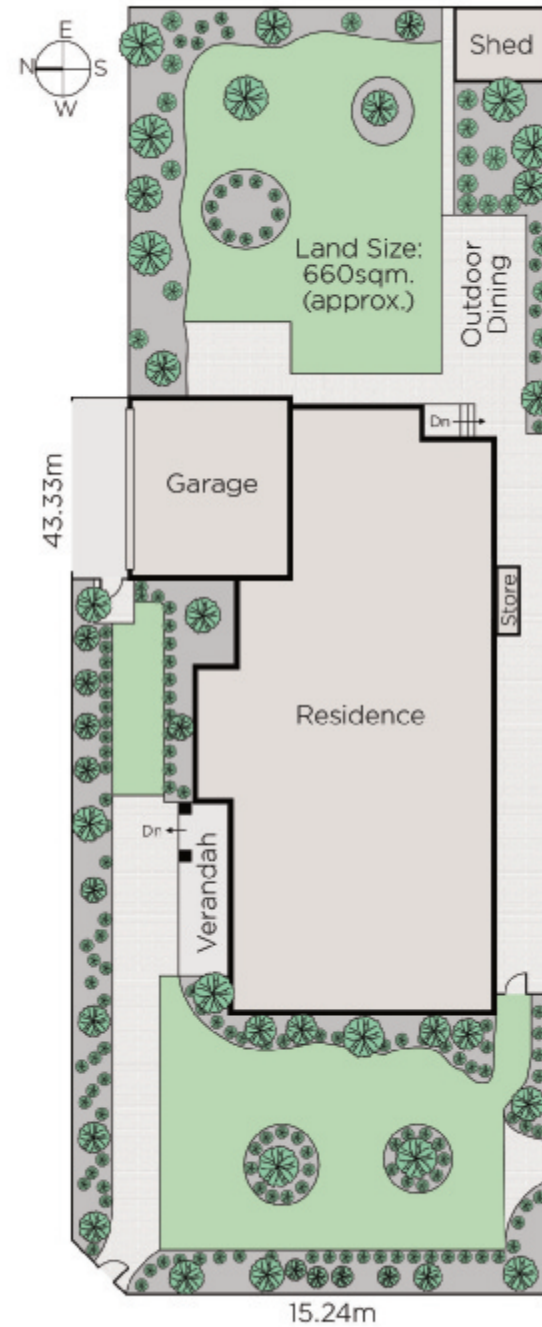
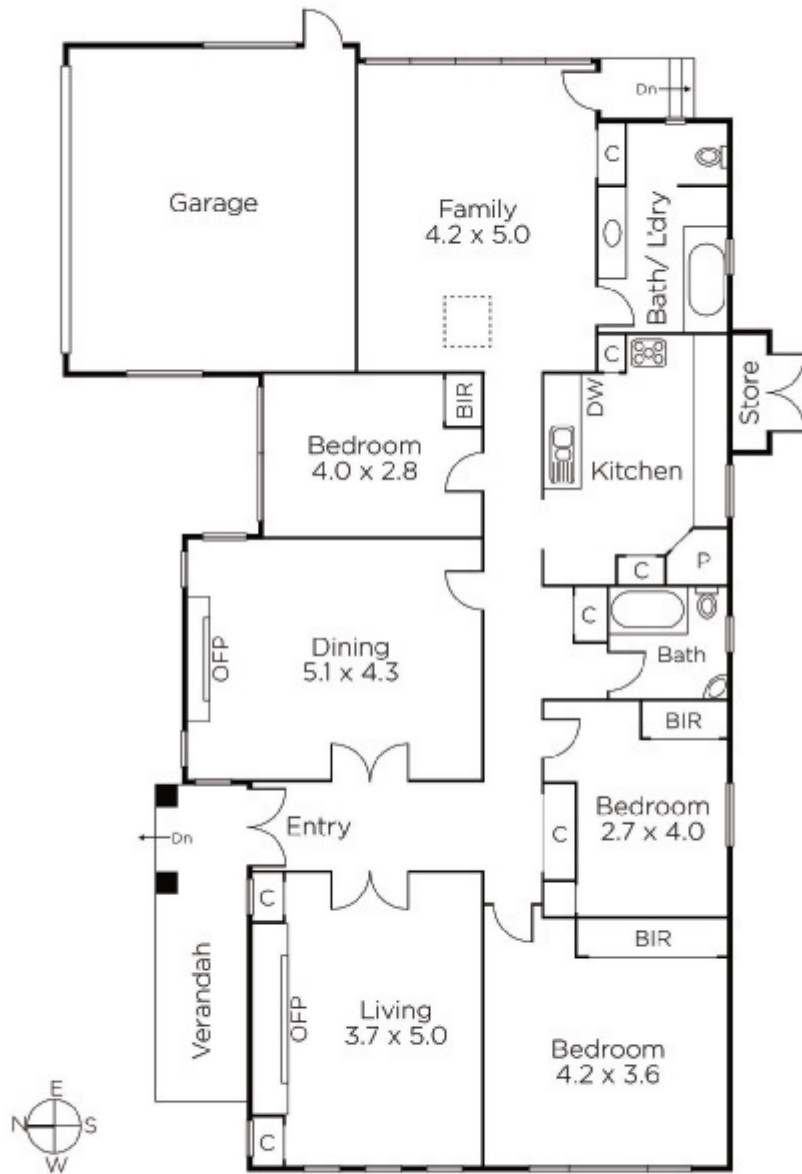
Ash Howarth 0415 756 764

Daniel Wheeler 0411 676 058

1111 High Street Armadale

[marshallwhite.com.au](http://marshallwhite.com.au)

  
MARSHALLWHITE



Disclaimer: Information provided is believed to be accurate as at the date of printing, no responsibility is taken for any errors or omissions. It is your responsibility to obtain independent, professional advice. Personal information collected from you is for security purposes and to contact you should the property sell prior to auction. We may use this information to provide you with other real estate services including referrals to authorised financial services' providers. Visit our website at [www.marshallwhite.com.au](http://www.marshallwhite.com.au) for our privacy policy.