

TREYVAUD MEMORIAL
PARK

CHADSTONE
SHOPPING CENTRE

44.19m

673sqm
(approx.)

15.2m

BOWEN STREET


MARSHALLWHITE

46 Bowen Street
Malvern East



Promising Position with Prime Potential

Superior in position, size and possibilities, this original c1950 residence set on an elevated north-facing 673sqm approx. allotment offers opportunity to renovate/extend, build a luxury home or potential development site STCA. Exclusively located close to Chadstone shopping precinct, magnificent parklands, excellent education facilities & transport, the home comprises formal living/dining room, two double bedrooms, classic bathroom, kitchen overlooking meals area, third bedroom/optional second living, laundry, separate WC & substantial backyard. Includes heating, garden shed, lock up garage & OSP.

46bowenstreet-malverneast.com

3 1 1

Auction Saturday 1st July at 11.30am

Todd Braggins 0424 552 238

Zali Reynolds 0422 576 049

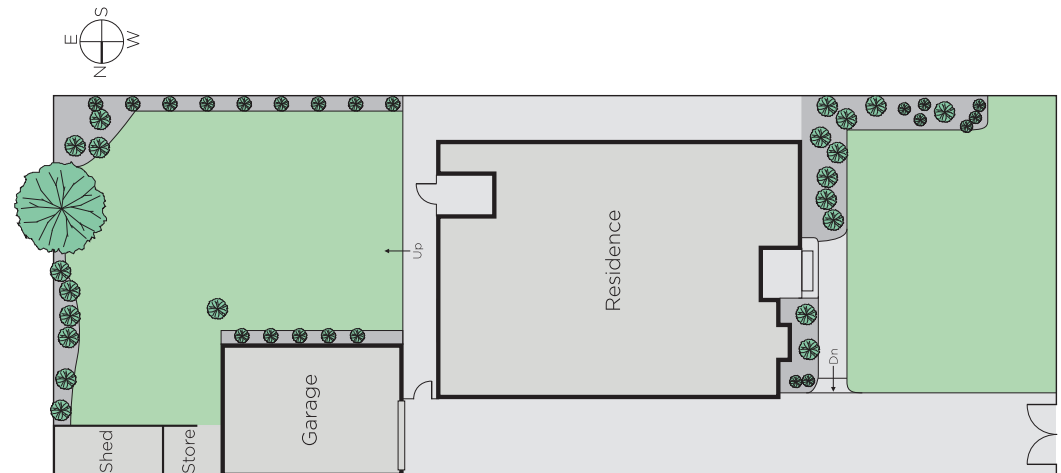
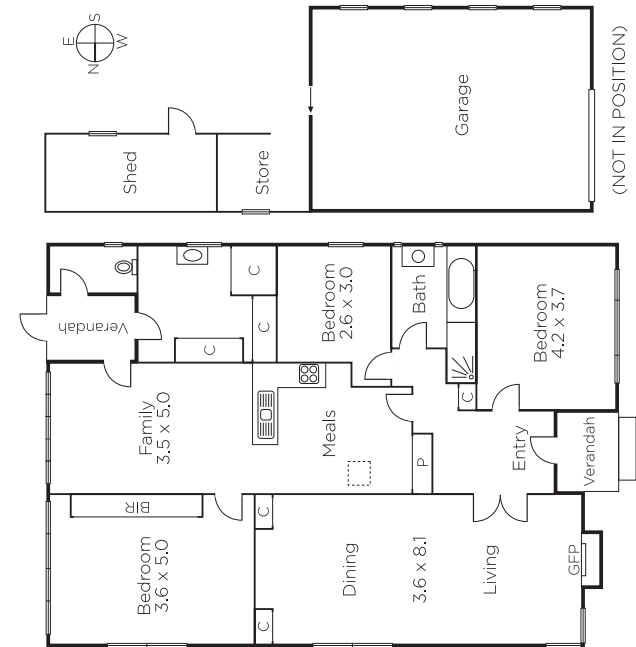
In Conjunction with Steven James

801 Glenferrie Road Hawthorn

marshallwhite.com.au



MARSHALLWHITE



Disclaimer: Information provided is believed to be accurate as at the date of printing, no responsibility is taken for any errors or omissions. It is your responsibility to obtain independent, professional advice. Personal information collected from you is for security purposes and to contact you should the property sell prior to auction. We may use this information to provide you with other real estate services including referrals to authorised financial services' providers. Visit our website at www.marshallwhite.com.au for our privacy policy.