



  
MARSHALLWHITE

45 Highfield Road  
Canterbury









## The Ultimate in Family Luxury

Beyond its attractive, traditional facade discover a magnificent family home, renovated, extended and overflowing with space and charm. A highly liveable family sanctuary awaits, superbly laid out over two spacious levels, including a huge, open living wing with well-appointed kitchen and separate open dining room, covered alfresco dining area and sweeping north-west facing backyard with carport. The ground floor also houses two large bedrooms, including master with ensuite/WIR, formal lounge, sparkling central bathroom and separate laundry, while upstairs plays host to a third living area/retreat, two enormous bedrooms with BIRs, a third family bathroom with separate bath and shower, and attic storage spanning the entire floor. Beautifully presented with wide open spaces, high ceilings and luxurious indoor/outdoor living, this highly functional home also features timber floors, ducted heating, split-system heating/cooling, Miele kitchen appliances and multiple large storage zones. Ideally positioned near sought-after local and private schools, a short walk from Maling Road cafes, Chatham and Canterbury Stations and Riversdale Road trams.

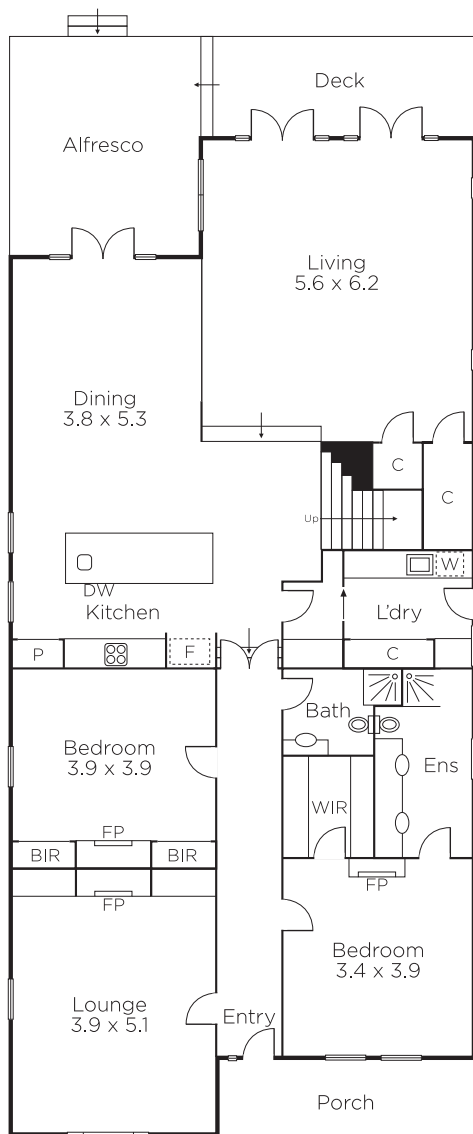
4  3  1 

Auction Saturday 27th October at 11.30am

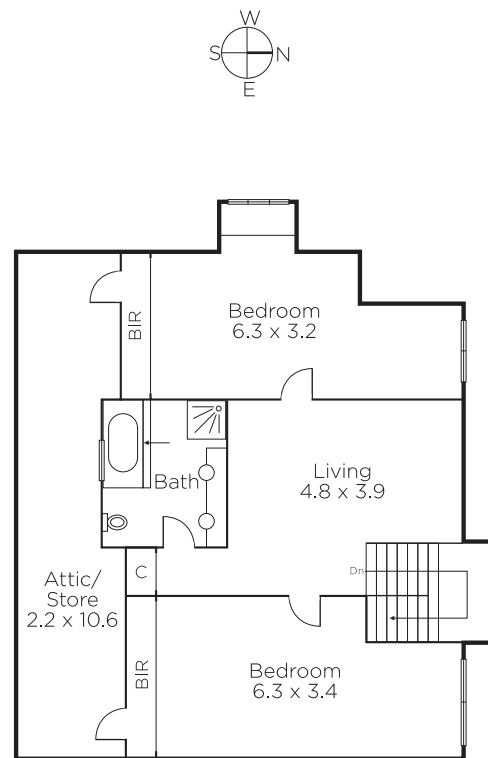
**Stephen Gough**  
0439 844 855

**Doug McLauchlan**  
0418 377 718

  
**MARSHALLWHITE**  
801 Glenferrie Road, Hawthorn



GROUND FLOOR



FIRST FLOOR

