



MARSHALLWHITE

4/459 Glenferrie Road  
Kooyong





## Deceased Estate

Commanding an imposing position on the corner of Monomeath Ave, this beautifully presented & proportioned boutique residence is one of just four in a gracious c1920's landmark building only metres from Kooyong Village & station, trams, schools & parks. Ornate high ceilings & plantation shutters add to the welcoming ambience in the impressively spacious sitting room, glorious dining room & study. The superbly appointed Gaggenau kitchen features stone benches & a casual dining area. Two generous double bedrooms share a marble bathroom. Includes alarm, security intercom, Euro-laundry & garage with remote.

4-459glenferrieroad-kooyong.com

2 1 1

Auction Saturday 17th March at 1.30pm

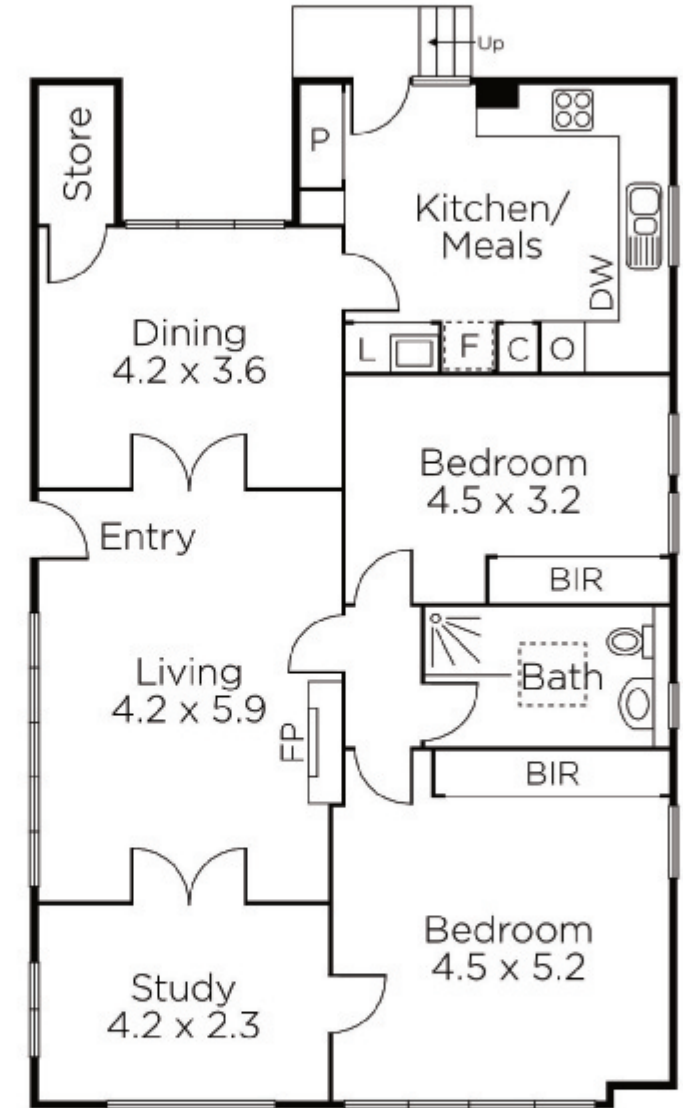
Susan McGlashan  
0417 554 224

Jack Moss  
0439 378 954

Fiona Ansell-Jones  
0410 325 240

  
MARSHALLWHITE

1111 High Street, Armadale



Disclaimer: Information provided is believed to be accurate as at the date of printing, no responsibility is taken for any errors or omissions. It is your responsibility to obtain independent, professional advice. Personal information collected from you is for security purposes and to contact you should the property sell prior to auction. We may use this information to provide you with other real estate services including referrals to authorised financial services providers. Visit our website at [www.marshallwhite.com.au](http://www.marshallwhite.com.au) for our privacy policy.