



  
MARSHALLWHITE

44 Invermay Grove  
Hawthorn East

44





## Lifestyle Victorian with Instant Appeal

This classic double-fronted Victorian is highlighted by an appealing traditional streetscape & façade complete with a picket fence, pretty garden framed by Silver Birch trees & iron lacework trimmed verandah preceding an interior featuring, arched hallway, 4 zoned bedrooms or 3+study, a family bathroom with sky windows and powder room plus a laundry/WC. An expansive light-filled family living/dining room & well-equipped kitchen leads to a private ornamental tree-lined garden with a sandstone alfresco area & multi-purpose room, retreat, office or possible rem/double garage (ROW). Land size: 446sqm approx.

44invermaygrove-hawthorneast.com

4 1 3

Auction Saturday 23rd June at 10.30am

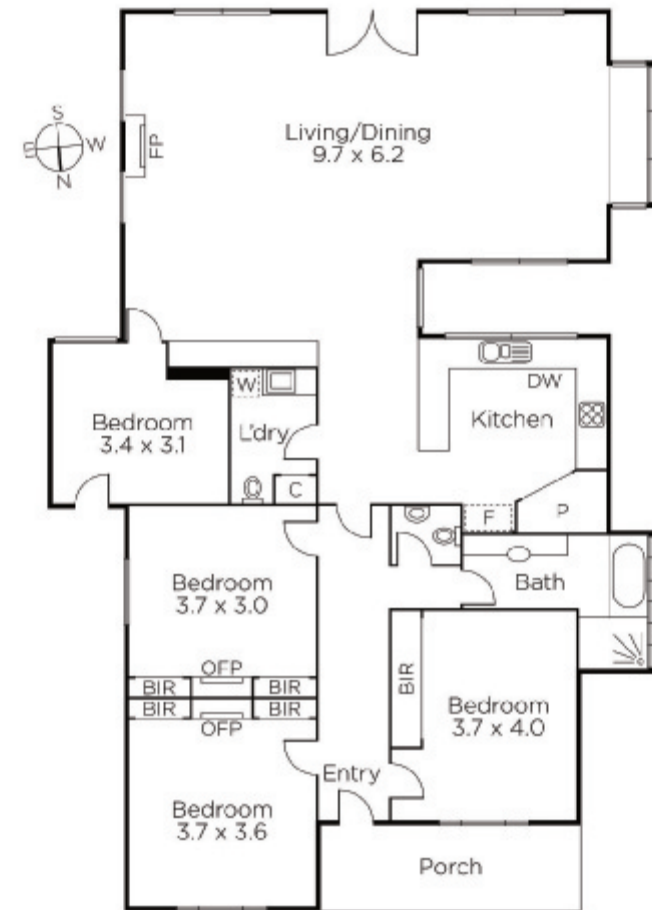
**Daide Lettieri**  
0414 018 707

**Désirée Wakim**  
0412 336 266

**Justin Long**  
0418 537 973

  
**MARSHALLWHITE**

801 Glenferrie Road, Hawthorn



Disclaimer: Information provided is believed to be accurate as at the date of printing, no responsibility is taken for any errors or omissions. It is your responsibility to obtain independent, professional advice. Personal information collected from you is for security purposes and to contact you should the property sell prior to auction. We may use this information to provide you with other real estate services including referrals to authorised financial services providers. Visit our website at [www.marshallwhite.com.au](http://www.marshallwhite.com.au) for our privacy policy.