



43




MARSHALLWHITE

43 Rowland Street
Kew



"Hillingdon" - c1928

Exclusively situated in the Sackville Ward near fine schools, shops, restaurants & trams, this substantial period residence's expansive proportions highlight its current family appeal while its highly prized 722sqm approx. northerly allotment offers outstanding potential to rebuild or develop (STCA). Gracious dimensions define the formal rooms (open fires), main bedroom (en-suite/WIR), four further bedrooms & two bathrooms. The living/dining room & well appointed kitchen open to a private north garden. A self contained 2-bedroom apartment comprises a kitchen, modern bathroom & large living room.

43rowlandstreet-kew.com

7 4 2

Auction Saturday 12th August at 1.30pm

Robert Ding 0418 858 393

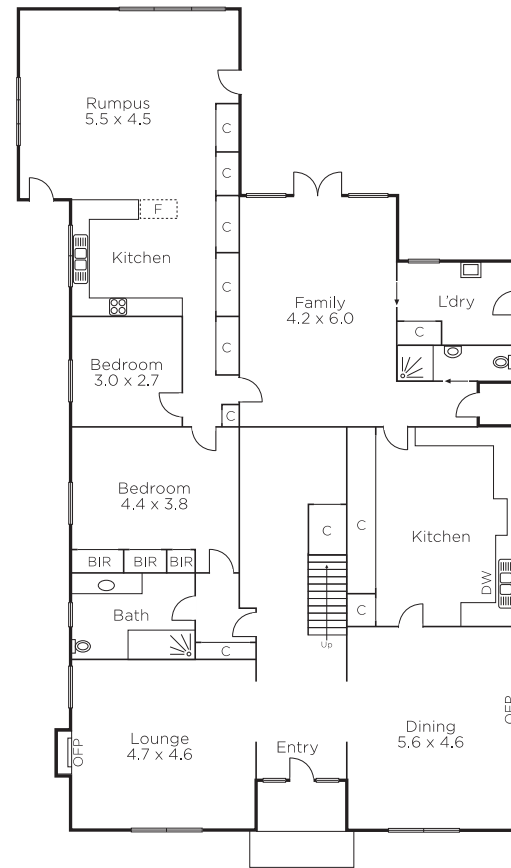
Mark Sproule 0408 090 205

801 Glenferrie Road Hawthorn

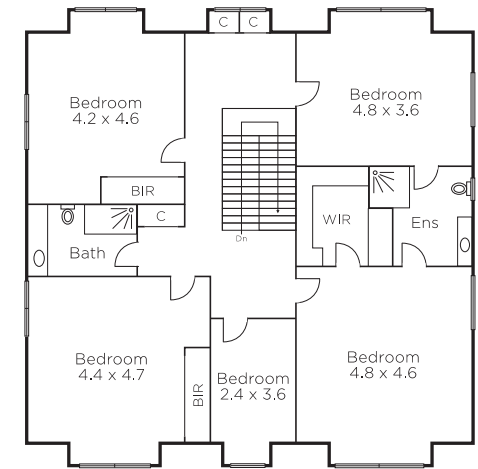
marshallwhite.com.au



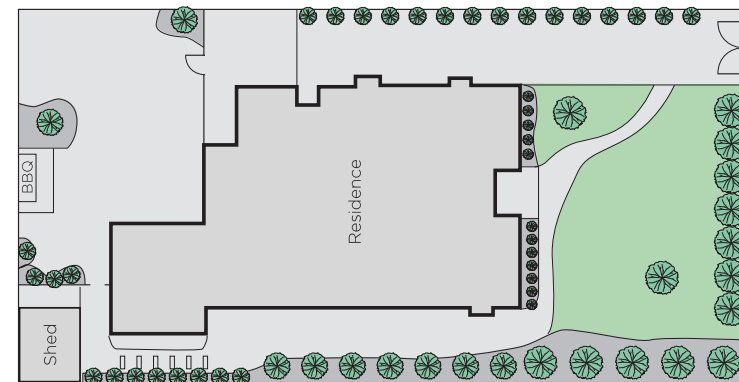
MARSHALLWHITE



GROUND FLOOR



FIRST FLOOR



Disclaimer: Information provided is believed to be accurate as at the date of printing, no responsibility is taken for any errors or omissions. It is your responsibility to obtain independent, professional advice. Personal information collected from you is for security purposes and to contact you should the property sell prior to auction. We may use this information to provide you with other real estate services including referrals to authorised financial services' providers. Visit our website at www.marshallwhite.com.au for our privacy policy.