



43



MARSHALLWHITE

43 Matlock Street
Canterbury



Pretty as a Picture

This pretty freestanding Edwardian cottage c1910 in the Maling Road precinct features a combination of a preferred north-facing rear aspect plus strategically positioned windows and sky-lights delivering an abundance of light to the interior. With accommodation comprising an L-shaped hallway, 3-bedrooms, main with WIR/ensuite, or the flexibility of 2+sitting room/study, family bathroom and laundry. A generous living/dining room including a well-equipped timber kitchen flows to a sun-drenched deck & leafy back garden. Incls. retained period attributes, OFPs, ducted heating, air conditioners, easy care gardens, garage with side lane access.

43matlockstreet-canterbury.com

3 2 1

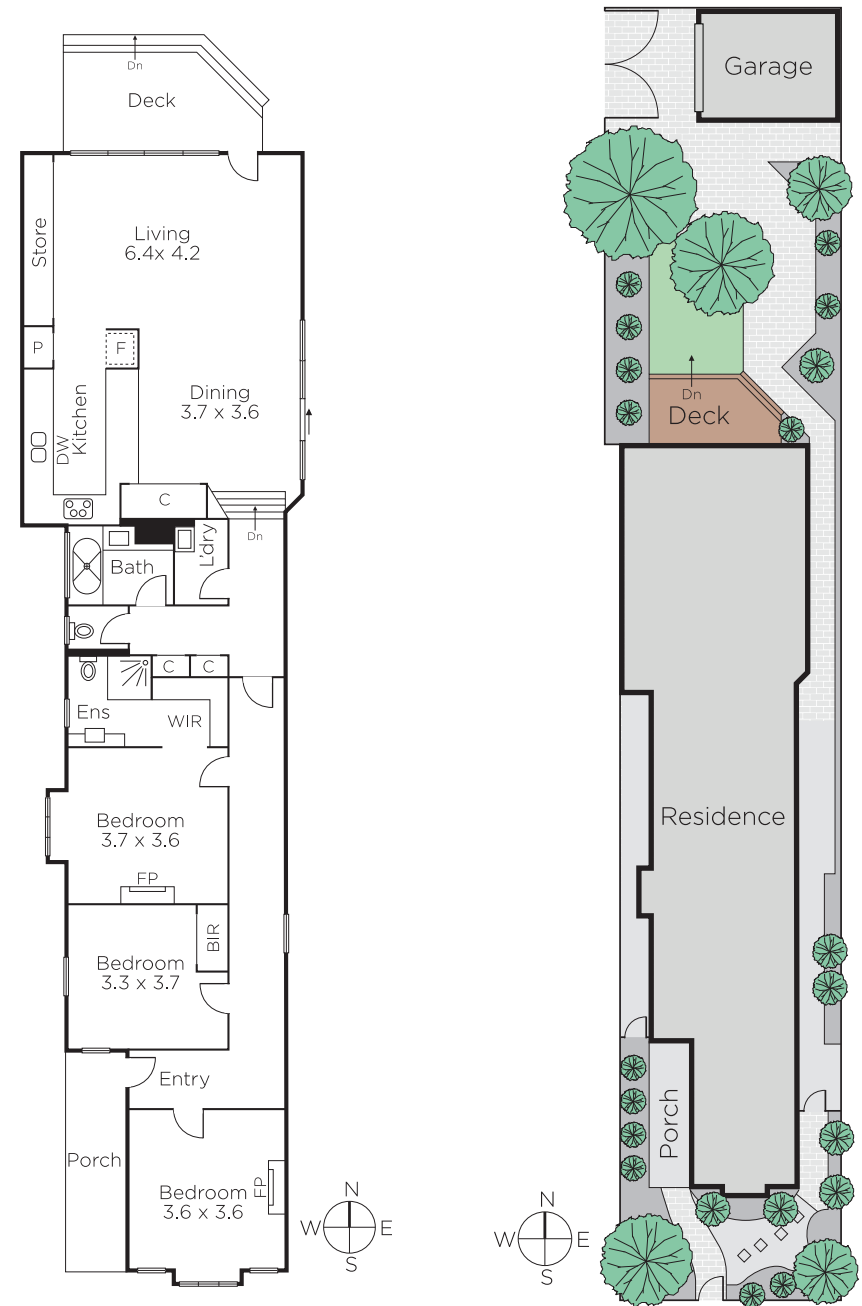
Auction Saturday 27th May at 12.30pm

James Tostevin 0417 003 333

David Smith 0402 361 680

801 Glenferrie Road Hawthorn
marshallwhite.com.au


MARSHALLWHITE



Disclaimer: Information provided is believed to be accurate as at the date of printing, no responsibility is taken for any errors or omissions. It is your responsibility to obtain independent, professional advice. Personal information collected from you is for security purposes and to contact you should the property sell prior to auction. We may use this information to provide you with other real estate services including referrals to authorised financial services' providers. Visit our website at www.marshallwhite.com.au for our privacy policy.