

21.33m

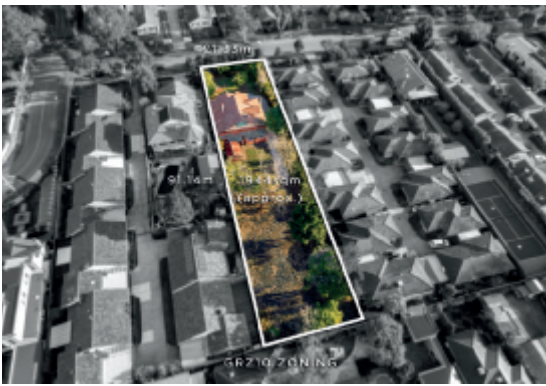


1944sqm
(approx.)

91.14m


MARSHALLWHITE

43 Grant Street
Malvern East



Priceless Redevelopment Or Renovation Opportunity

Presenting a priceless opportunity to acquire a magnificent property with a wide frontage and total size of 1,944sqm approx., with a residential zoning of GRZ10 in a prized Malvern East residential precinct. Offering fantastic options for developers or new home builders to consider either renovating or demolishing the existing dwelling and redeveloping on an exceptionally valuable site whilst capitalising on a preferred northern rear aspect (STCA). The property is currently occupied by a 1920's red brick post Edwardian 4-bedroom home in original condition requiring a total makeover.

4 1 1

Auction Saturday 20th October at 2.30pm

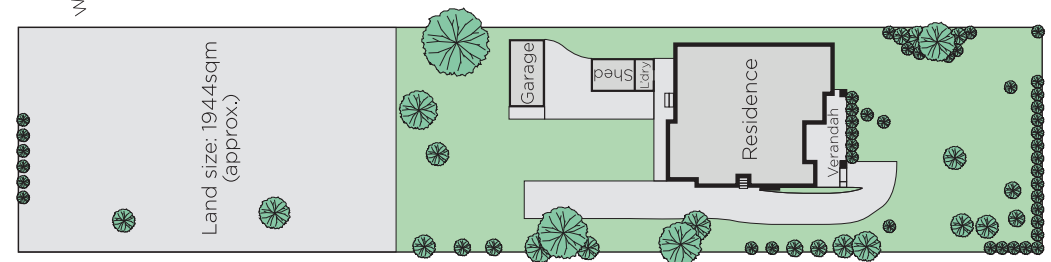
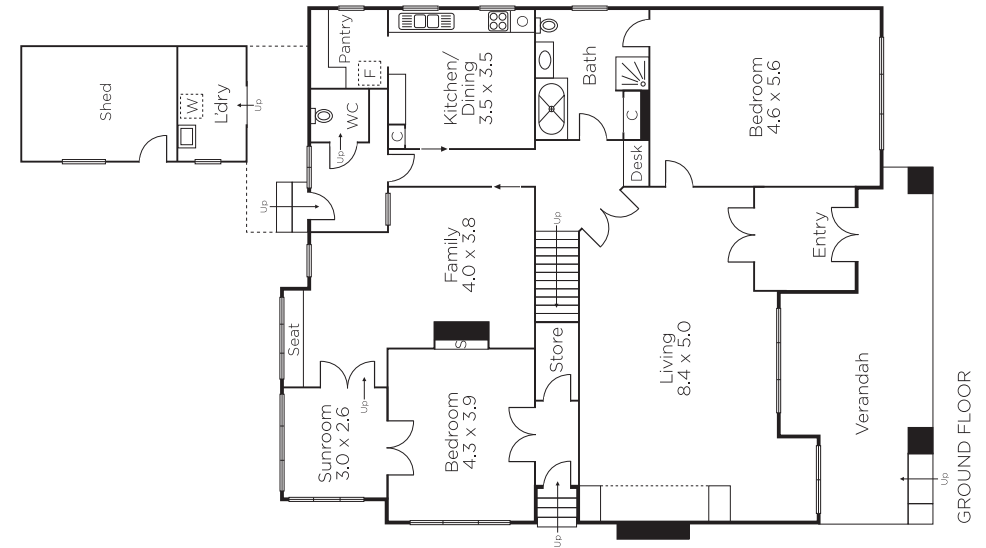
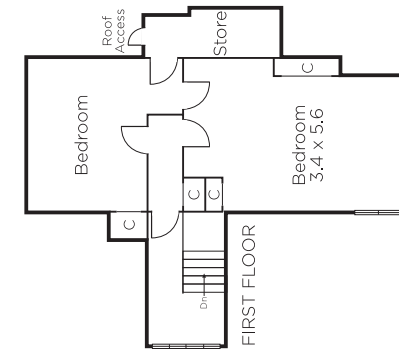
Fiona Ansell-Jones
0410 325 240

John Manton
0411 444 930

Hamish Tostevin
0408 004 766


MARSHALLWHITE

1111 High Street, Armadale



Disclaimer: Information provided is believed to be accurate as at the date of printing, no responsibility is taken for any errors or omissions. It is your responsibility to obtain independent, professional advice. Personal information collected from you is for security purposes and to contact you should the property sell prior to auction. We may use this information to provide you with other real estate services including referrals to authorised financial services providers. Visit our website at www.marshallwhite.com.au for our privacy policy.