



MARSHALLWHITE



42
42 Boston Avenue
Malvern East





An Entertainer's Paradise

With style, space and luxury in abundance, this sensational c1920's single level residence's stunning interior dimensions and lavish resort-style outdoor domain provide the ultimate in family living and entertaining close to Terminus Village and trams, Darling and East Malvern stations, schools and Ardrie Park. A wide hall featuring dark timber floors, ornate ceilings and leadlight windows creates a memorable first impression that is matched by a beautiful sitting room with open fire and elegant formal dining room. Timber floors continue through the expansive living/dining room with a gas fire and gourmet kitchen. Bi-fold doors open to a spectacular covered alfresco terrace with top of the range BBQ kitchen with bar fridge, separate games pavilion, picturesque heated pool and 2 tranquil water features. Enjoying its own space, the generous main bedroom with walk in robe and stylish en-suite and a fitted study or 4th bedroom are complemented by a children's wing comprising two double bedrooms with built in robes and designer bathroom. Also includes alarm, audio wiring, powder-room, laundry, solar-panels, water tanks, irrigation, attic storage, shed and 2xgarage. Land size: 729sqm (approx.)

4  2  2 

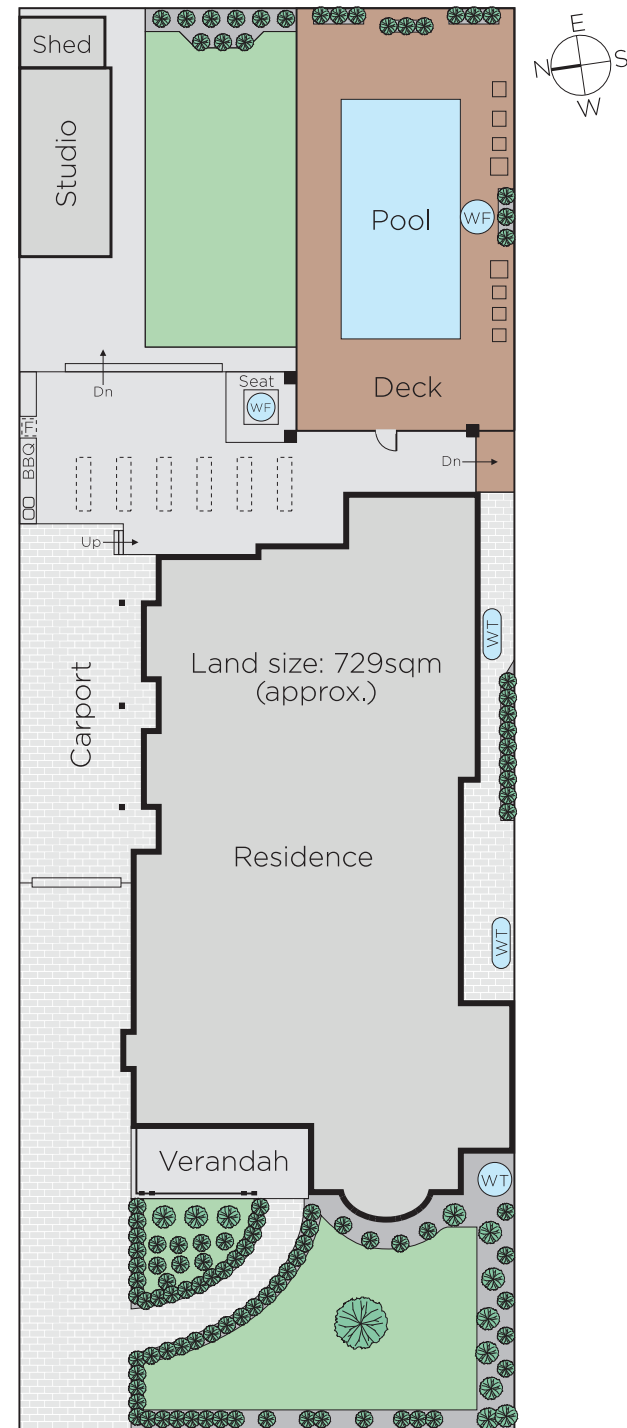
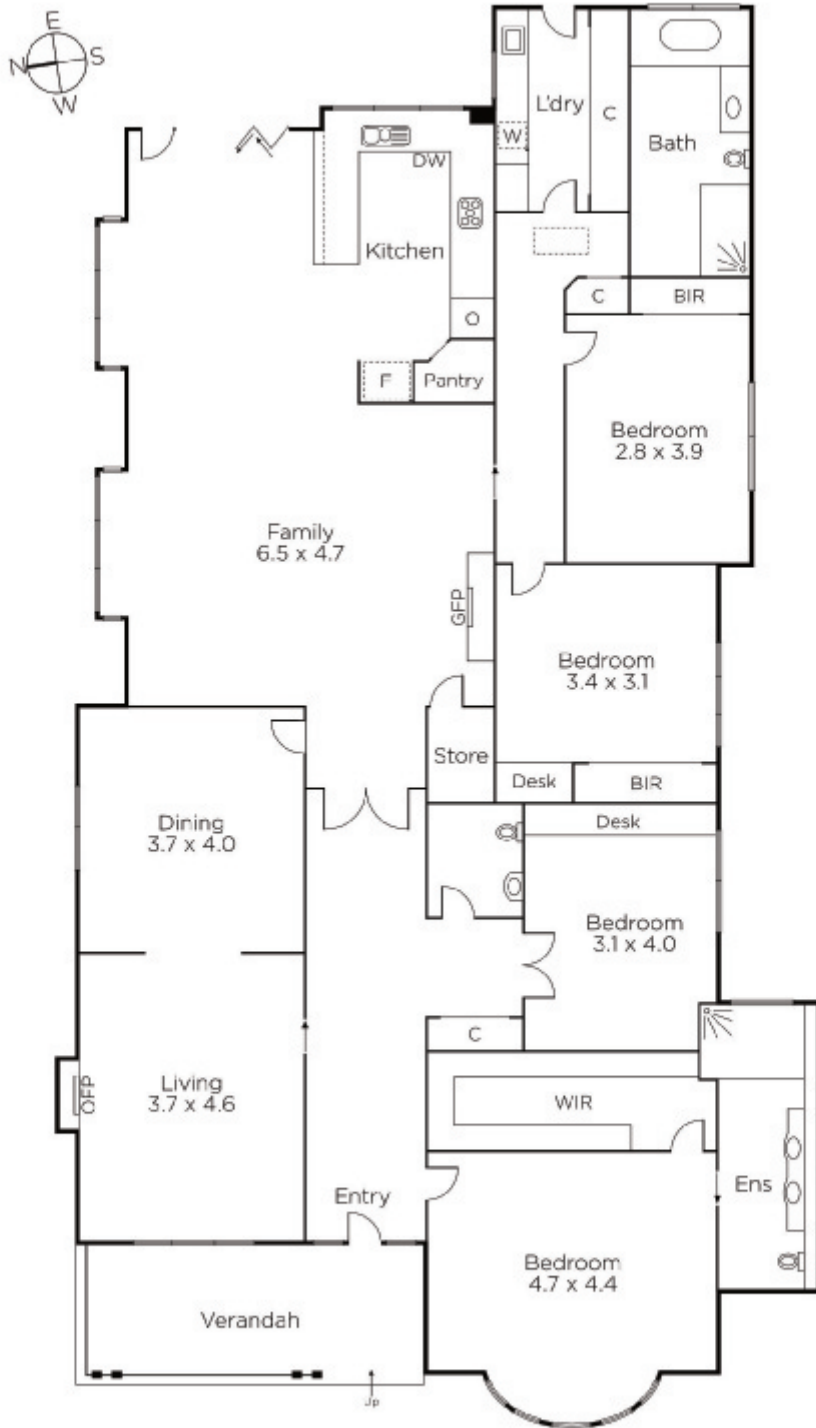
Auction Saturday 8th December at 12.30pm

John Manton
0411 444 930

Clare Moloney
0401 546 441


MARSHALLWHITE

1111 High Street, Armadale



Disclaimer: Information provided is believed to be accurate as at the date of printing, no responsibility is taken for any errors or omissions. It is your responsibility to obtain independent, professional advice. Personal information collected from you is for security purposes and to contact you should the property sell prior to auction. We may use this information to provide you with other real estate services including referrals to authorised financial services' providers. Visit our website at www.marshallwhite.com.au for our privacy policy.