




MARSHALLWHITE
ONE

412G/93 Dow Street
Port Melbourne



‘Bayview’: Huge Vogue Apartment

Remarkably spacious and superbly finished, this two bedroom, executive apartment delivers a rare sense of luxury in a blue chip location that blends the best of the inner-city with bayside bliss. Upon entering the home’s vast open-plan kitchen/dining/lounge, you are immediately struck by its impressive size, as well as Caesar Stone kitchen benches, superior stainless steel appliances and floor-to-ceiling windows that connect to the main balcony. Equally engaging, the master bedroom is enormous with an ensuite, walk-in-robe and balcony of its own, whilst the second bedroom also has robes and balcony access. Highly secure with video entry, basement parking and elevator access, the home also features reverse cycle air conditioning and a European laundry in the main bathroom. Just metres from Bay St and the waterfront itself, the local cafes, restaurants, bars and strip shopping are a huge drawcard, whilst a city-bound tram is also nearby.

412g-93dowstreet-portmelbourne.com 2 2 1

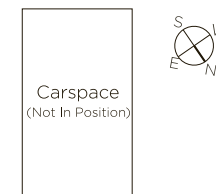
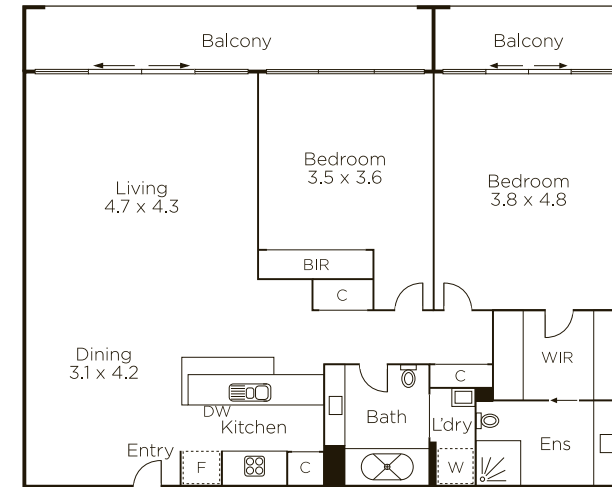
Auction Saturday 3rd June at 11.30am

Matthew Grima 0403 438 601

Bradley Steinbach 0403 539 038

101 Dundas Place Albert Park

9822 9999 mwone.com.au




MARSHALLWHITE
ONE

Disclaimer: Information provided is believed to be accurate as at the date of printing, no responsibility is taken for any errors or omissions. It is your responsibility to obtain independent, professional advice. Personal information collected from you is for security purposes to contact you should the property sell prior to auction. We may use this information to provide you with other real estate services including referrals to authorized financial services providers. Visit our website at www.mwone.com.au for our privacy policy.