



MARSHALLWHITE

41 Mangarra Road
Canterbury





Golden Mile Edwardian Elegance

The absolutely stunning landscaped gardens that surround this charming single level Edwardian residence are matched inside by a captivating blend of original elegance and contemporary designer style. The result is an inviting family domain enviably situated in the Golden Mile close to Maling Rd shops, multiple transport options, a range of schools including Camberwell Grammar, Canterbury Girls and an array of parkland and recreational facilities.

Beautiful timber floors complement the ornate ceilings, lead light windows and period detailing as you enter the home. The luxuries continue in the three spacious bedrooms with a light filled bay window and an open fireplace. The entrance hall continues past a family bathroom and into an elegant sitting room which then leads through to the hub of the home, a glorious west facing family room. Adjacent to a gourmet kitchen and spacious meals zone the family room includes an open fireplace and French doors opening to an alfresco entertaining deck overlooking the luscious and private rear garden. Other features include a carport, ducted heating, reverse cycle air conditioning and ample storage.

3  2  2 

Auction Saturday 13th October at 11.30am

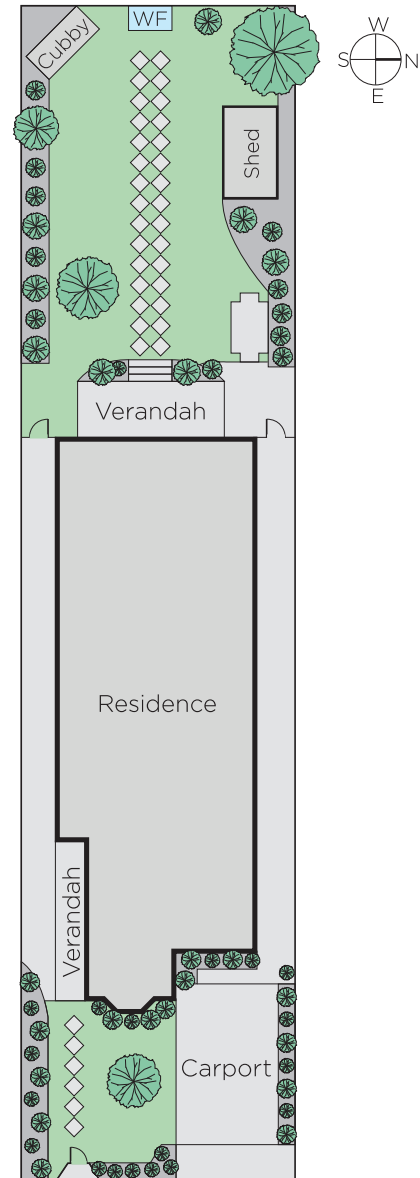
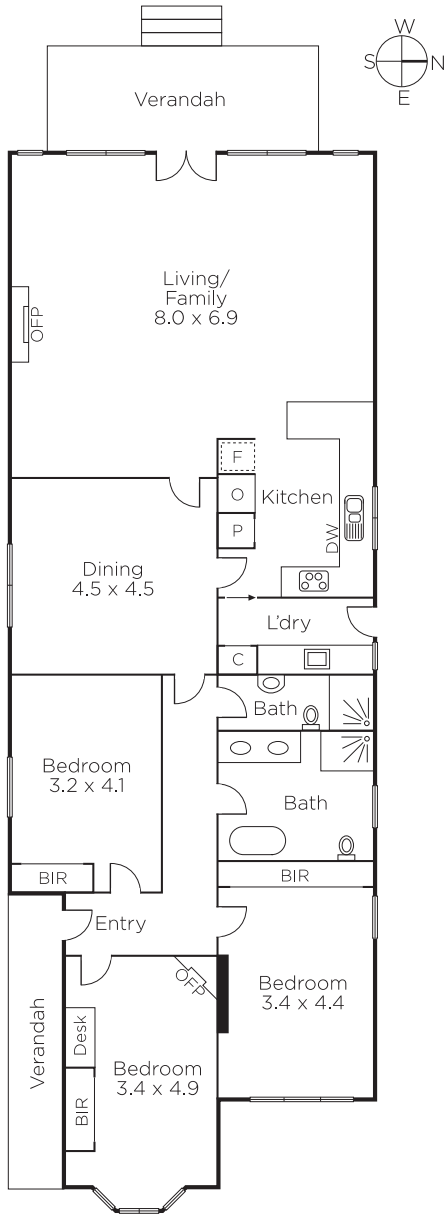
Zali Reynolds
0422 576 049

Monica Rezk
0413 596 342

Doug McLauchlan
0418 377 718


MARSHALLWHITE

801 Glenferrie Road, Hawthorn



Disclaimer: Information provided is believed to be accurate as at the date of printing, no responsibility is taken for any errors or omissions. It is your responsibility to obtain independent, professional advice. Personal information collected from you is for security purposes and to contact you should the property sell prior to auction. We may use this information to provide you with other real estate services including referrals to authorised financial services' providers. Visit our website at www.marshallwhite.com.au for our privacy policy.