



MARSHALLWHITE

40A Stawell Street  
Kew





## Prime Studley Park Opportunity 998sqm approx.

Exclusively situated in a prized Studley Park address just metres from the Yarra River, this iconic c1959 brick residence's evocative style and substantial north-facing 998sqm approx. allotment provide a sensational opportunity to renovate and extend (STCA). A river-stone feature wall spans the entrance hall which flows through to the expansive living/dining room with open fire and balcony. The well appointed kitchen and casual dining area opens to the north-facing leafy garden. Versatile accommodation comprises an extra large bedroom, two double bedrooms, two bathrooms and two very spacious studios.

40astawellstreet-kew.com

3 2 1

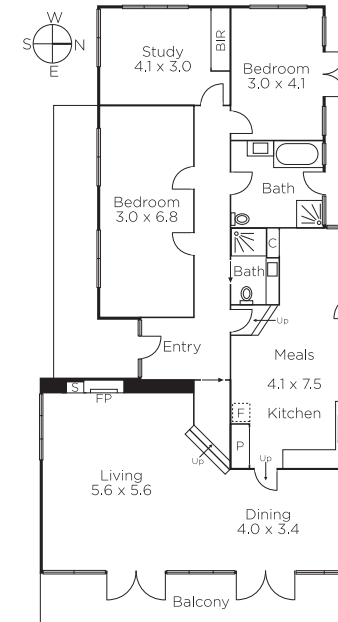
Expressions of Interest Close Monday 8th May at 5pm

Anton Zhouk 0430 224 438

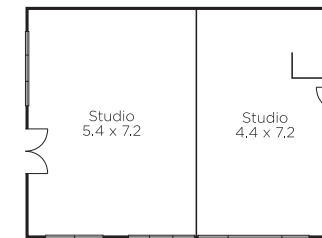
James Redfern 0412 360 667

801 Glenferrie Road Hawthorn  
marshallwhite.com.au

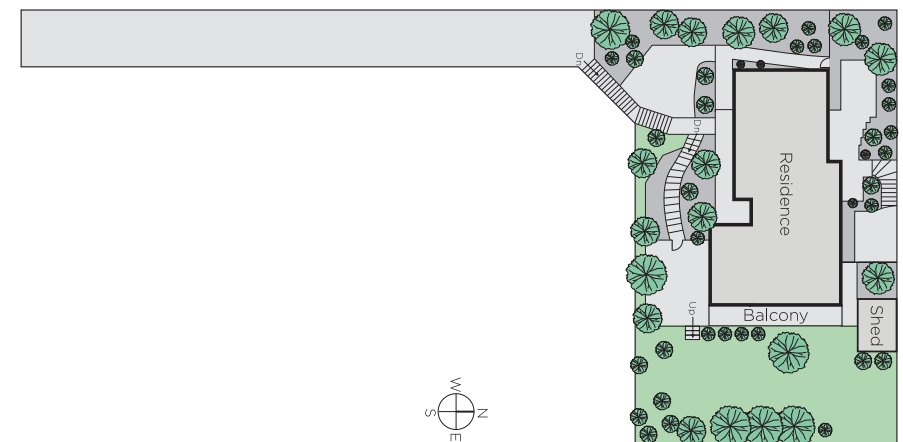
  
MARSHALLWHITE



GROUND FLOOR



BASEMENT



Disclaimer: Information provided is believed to be accurate as at the date of printing, no responsibility is taken for any errors or omissions. It is your responsibility to obtain independent, professional advice. Personal information collected from you is for security purposes and to contact you should the property sell prior to auction. We may use this information to provide you with other real estate services including referrals to authorised financial services' providers. Visit our website at [www.marshallwhite.com.au](http://www.marshallwhite.com.au) for our privacy policy.