



MARSHALLWHITE

40 Evansdale Road  
Hawthorn





## In a Class of it's Own

Positioned at corner end of an iconic row of seven Victorian homes with similarly styled elegant parapets, the only double fronted home in the row, showcases a fully-renovated interior which exudes contemporary designer styling of the highest standards. Highlighted by a crisp white façade and interior, trimmed with black detailing - it features subtle retained period attributes including an iron lacework verandah, decorative ceilings, cornices and roses plus an arched hallway with Tasmanian Oak floorboards. Arguably delivering one of the finest Victorian homes of its type in the surrounding area. Set in lush, easy care gardens with ornamental trees the home features three bedrooms, main with a WIR and pristine ensuite, a family bathroom and separate laundry through to an expansive living domain with adjacent study, incorporating superbly appointed kitchen equipped with a WIP, granite benchtops, island bench plus prestige Smeg and Bosch stainless steel appliances. All flooded with natural light from floor-to-ceiling windows and doors providing garden vistas and access to a north-west facing wrap-around deck - perfect for outdoor dining and entertaining in private surroundings.

[40evansdaleroad-hawthorn.com](http://40evansdaleroad-hawthorn.com)

3  2  1 

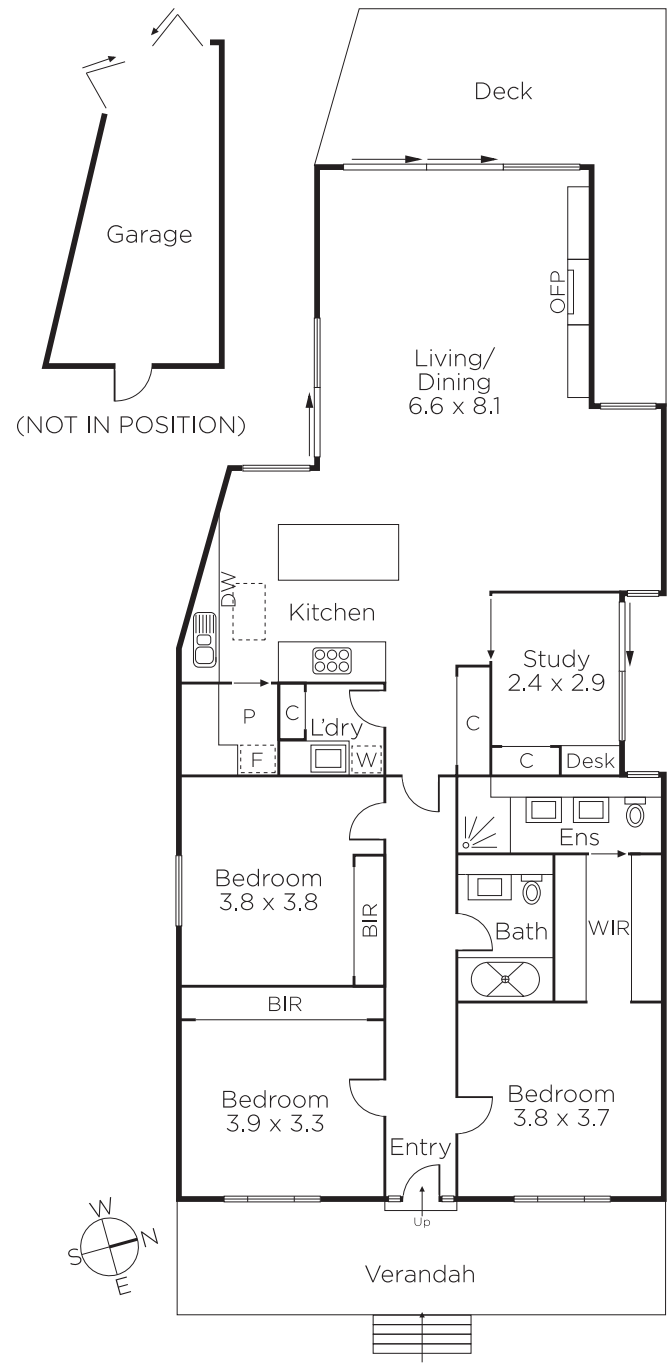
Auction Saturday 5th May at 10.30am

**Hamish Tostevin**  
0408 004 766

**Sally O'Connell**  
0413 474 474

  
MARSHALLWHITE

801 Glenferrie Road, Hawthorn



Disclaimer: Information provided is believed to be accurate as at the date of printing, no responsibility is taken for any errors or omissions. It is your responsibility to obtain independent, professional advice. Personal information collected from you is for security purposes and to contact you should the property sell prior to auction. We may use this information to provide you with other real estate services including referrals to authorised financial services' providers. Visit our website at [www.marshallwhite.com.au](http://www.marshallwhite.com.au) for our privacy policy.