



MARSHALLWHITE

4 Yeovil Road  
Glen Iris











## Superb Single Level Style

Defined by compelling contemporary elegance, this beautifully renovated solid brick period residence's generous, light-filled and single level dimensions deliver exceptional lifestyle enjoyment. A short walk to Leo's Supermarket, Burwood station, Toorak Rd trams, Hartwell Sportsground and a range of schools. Polished timber floors flow through a wide central hallway to a captivating sitting room with marble fireplace. Natural light streams through the expansive proportions of the living and dining room with a stylish modern European kitchen. The living area flows out to a full width deck overlooking the private leafy west-facing garden. The spacious main bedroom with a walk in robe and lavish en-suite is matched by two additional double bedrooms with built in robes and a chic bathroom. Impeccably presented throughout, it also includes an alarm, video intercom, central vacuum, ducted heating, evaporative cooling, audio wiring, laundry, work-shop, auto gates and garage. Land size: 702sqm approx.

[4yeovilroad-gleniris.com](http://4yeovilroad-gleniris.com)

4  2  2 

Auction Saturday 28th April at 2.30pm

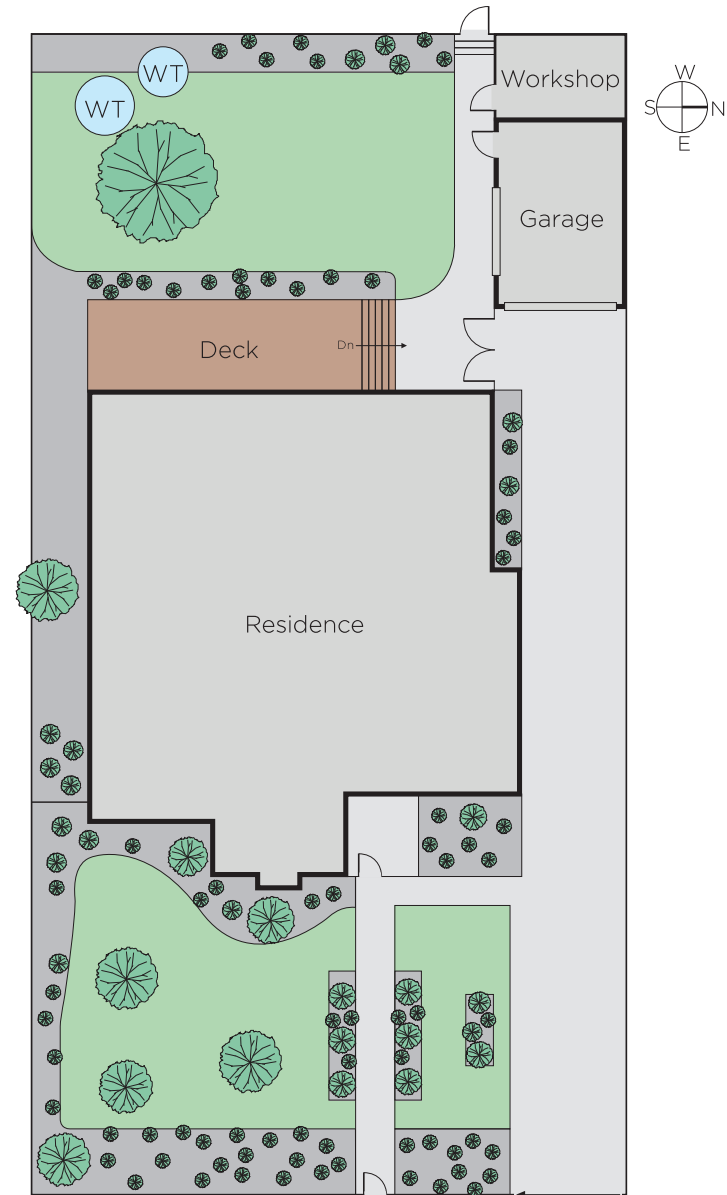
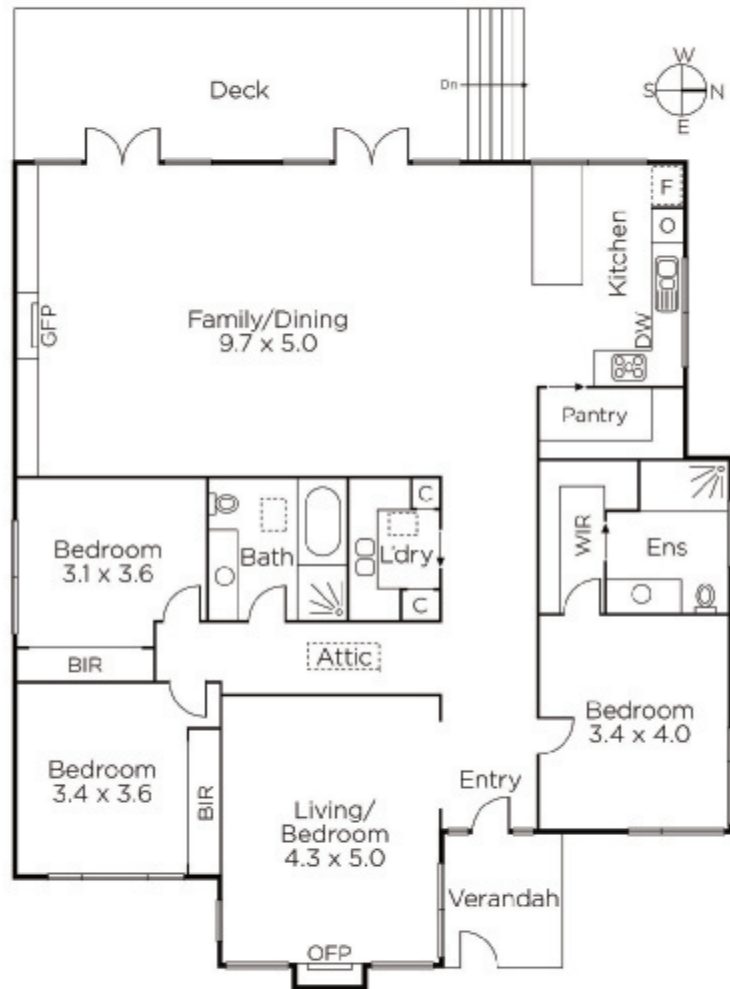
**Grayson Rayner**  
0433 654 744

**Zali Reynolds**  
0422 576 049

**Robert Ding**  
0418 858 393

  
**MARSHALLWHITE**

801 Glenferrie Road, Hawthorn



Disclaimer: Information provided is believed to be accurate as at the date of printing, no responsibility is taken for any errors or omissions. It is your responsibility to obtain independent, professional advice. Personal information collected from you is for security purposes and to contact you should the property sell prior to auction. We may use this information to provide you with other real estate services including referrals to authorised financial services' providers. Visit our website at [www.marshallwhite.com.au](http://www.marshallwhite.com.au) for our privacy policy.