




MARSHALLWHITE

4 Waterloo Street
Camberwell



27.3m

33.2m

915 sqm
approx.

33.4m

27.3m



Once in a Lifetime

Magnificently set behind an exceptionally broad street frontage, this substantial residence represents an outstanding opportunity to further update or to create a new dream home in one of Camberwell's most prestigious precincts (STCA).

Framed by picturesque established gardens, the central entrance hall introduces generous living and dining rooms that open to a large north-facing indoor pool. The well-appointed modern stone kitchen, casual dining area and light-filled retreat with study nook open to a sunny private west-facing garden. An abundance of family accommodation comprises a spacious main bedroom with en-suite and walk in robe, a second large bedroom with study area and en-suite, four additional bedrooms and two bathrooms.

Enviably situated in a leafy tree-lined street walking distance to Camberwell Junction, Camberwell station and a range of great schools, this 915sqm approx. property also includes a sauna and double garage.

4waterloostreet-camberwell.com

6  5  2 

Auction Saturday 1st April at 3.30pm

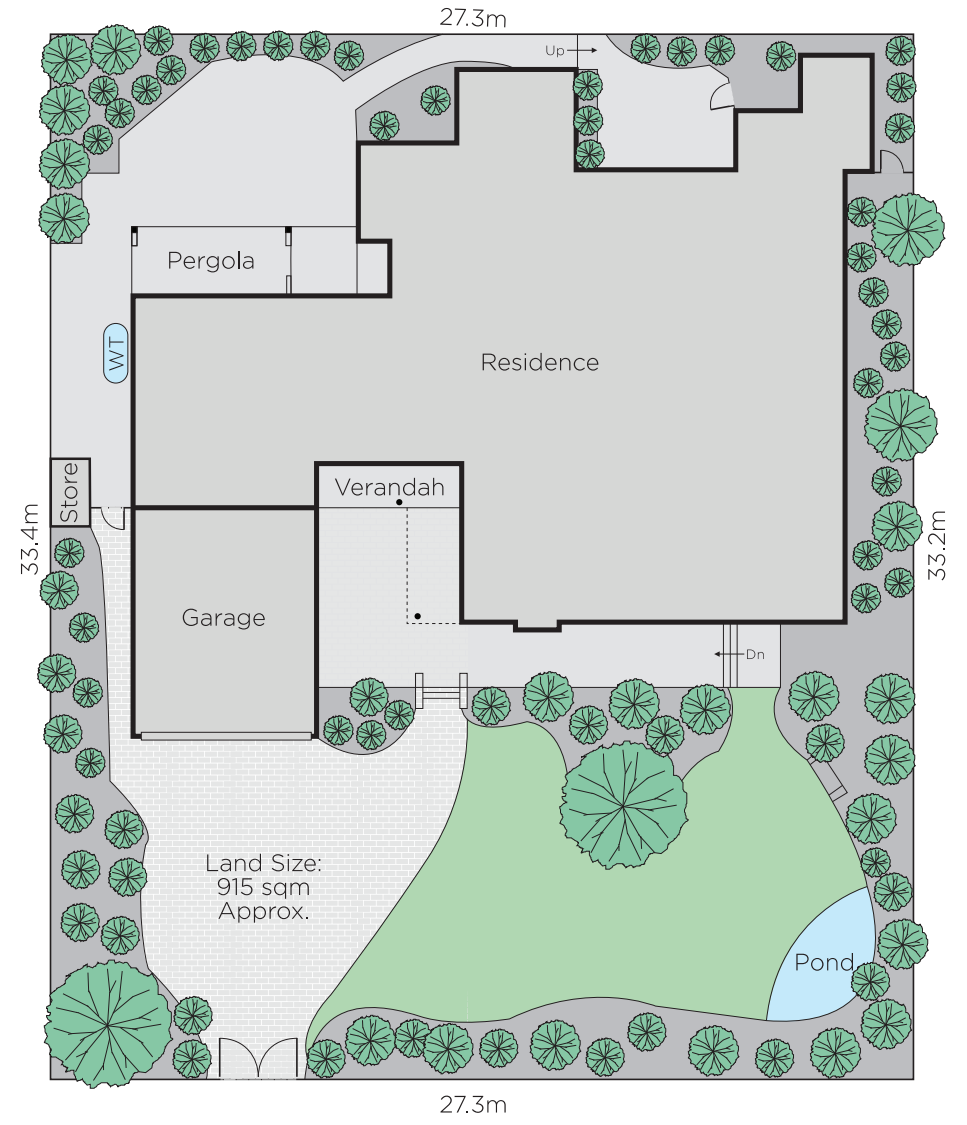
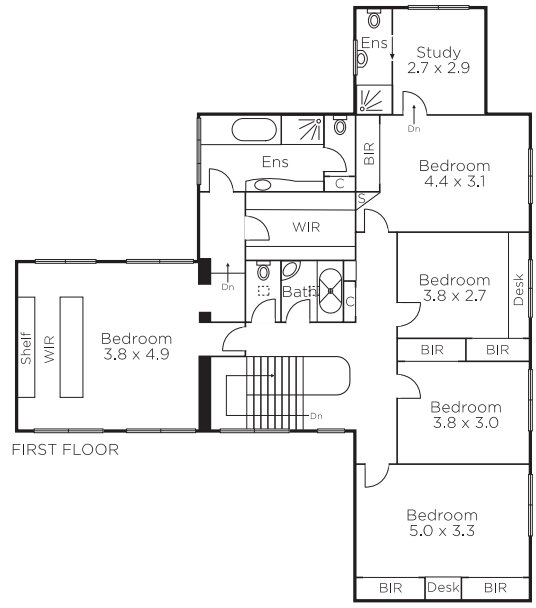
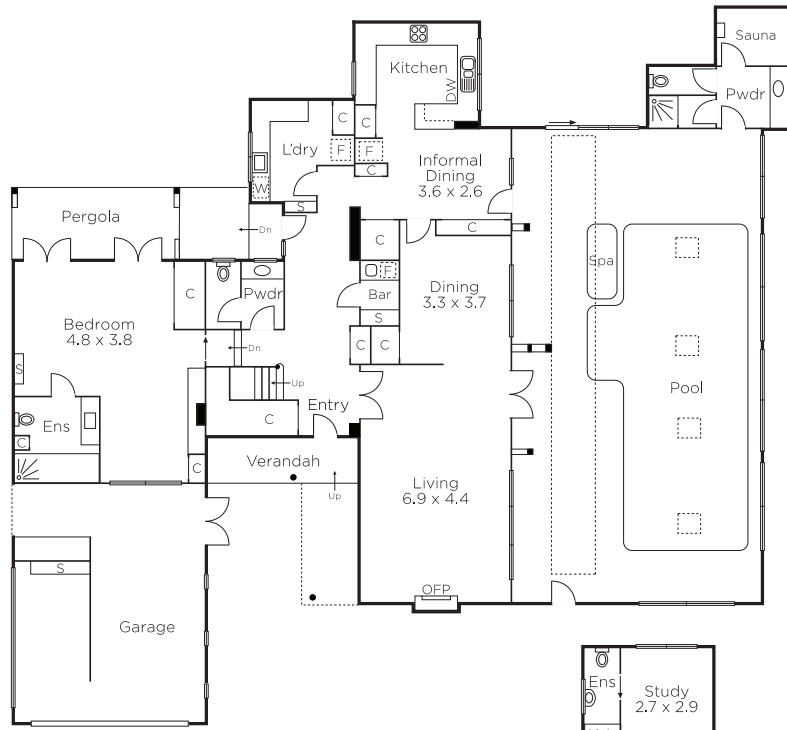
Nicholas Franzmann 0412 247 175

Nikki Van Gulick 0419 325 911

801 Glenferrie Road Hawthorn

marshallwhite.com.au


MARSHALLWHITE



Disclaimer: Information provided is believed to be accurate as at the date of printing, no responsibility is taken for any errors or omissions. It is your responsibility to obtain independent, professional advice. Personal information collected from you is for security purposes and to contact you should the property sell prior to auction. We may use this information to provide you with other real estate services including referrals to authorised financial services' providers. Visit our website at www.marshallwhite.com.au for our privacy policy.