



  
MARSHALLWHITE

4 Leighton Court  
Toorak





## Timeless Elegance in Elite Cul De Sac

In an exclusive cul de sac between Hawksburn & Toorak Villages, Toorak station & some of Melbourne's best schools, this refined residence's generously presented dimensions deliver superb lifestyle appeal in a low maintenance context. The marble hall introduces sitting room with open fire, formal dining, casual living/dining room, gourmet kitchen & retreat all opening to the private northwest paved garden ideal for entertaining. The main bedroom with ensuite & built in robe is complemented by two additional bedrooms with robes & lavish bathroom. Includes powder-room, irrigation, large wine cellar & garage.

4leightoncourt-toorak.com

3 2 1

Auction Saturday 20th May at 2.30pm

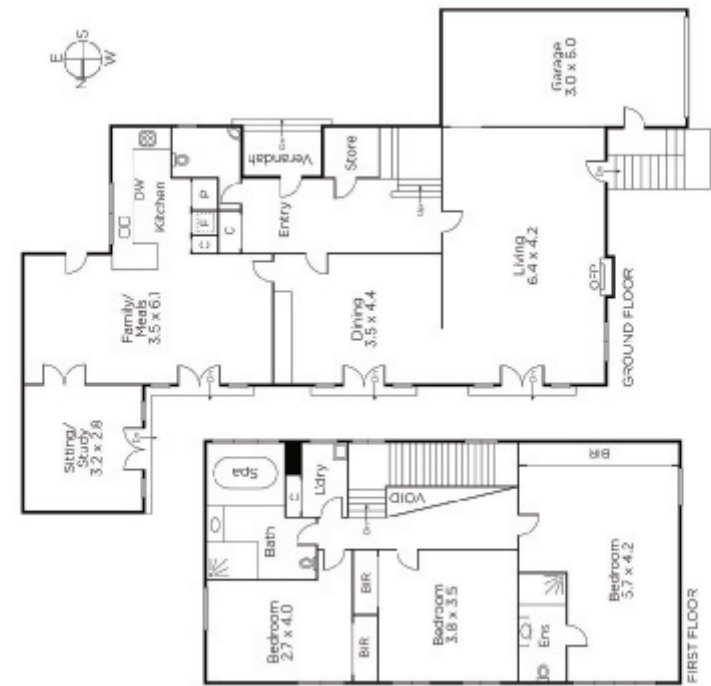
James Redfern 0412 360 667

John Li 0476 384 718

Madeline Kennedy 0411 873 913

1111 High Street Armadale  
marshallwhite.com.au

  
MARSHALLWHITE



Disclaimer: Information provided is believed to be accurate as at the date of printing, no responsibility is taken for any errors or omissions. It is your responsibility to obtain independent, professional advice. Personal information collected from you is for security purposes and to contact you should the property sell prior to auction. We may use this information to provide you with other real estate services including referrals to authorised financial services' providers. Visit our website at [www.marshallwhite.com.au](http://www.marshallwhite.com.au) for our privacy policy.