




MARSHALLWHITE

4 Gladstone Avenue
Armadale



Deco Charm, Desirable Location

Behind a broader than expected frontage, this charming c1939 solid brick Art Deco residence's impeccably presented single level dimensions provide instant lifestyle appeal near Malvern Central and Malvern station.

Generous proportions, high ceilings and northern light define the entrance hall, inviting living room, modern kitchen and large dining room opening to a private north oriented garden. The two spacious bedrooms and a study/3rd bedroom are accompanied by a bathroom and 2nd toilet.

Offering excellent entry to a prized location, it also includes laundry, water tank, shed and off street parking. Land size: 386sqm approx.

4gladstoneavenue-armadale.com

3 1 2

Auction Saturday 13th May at 10.30am

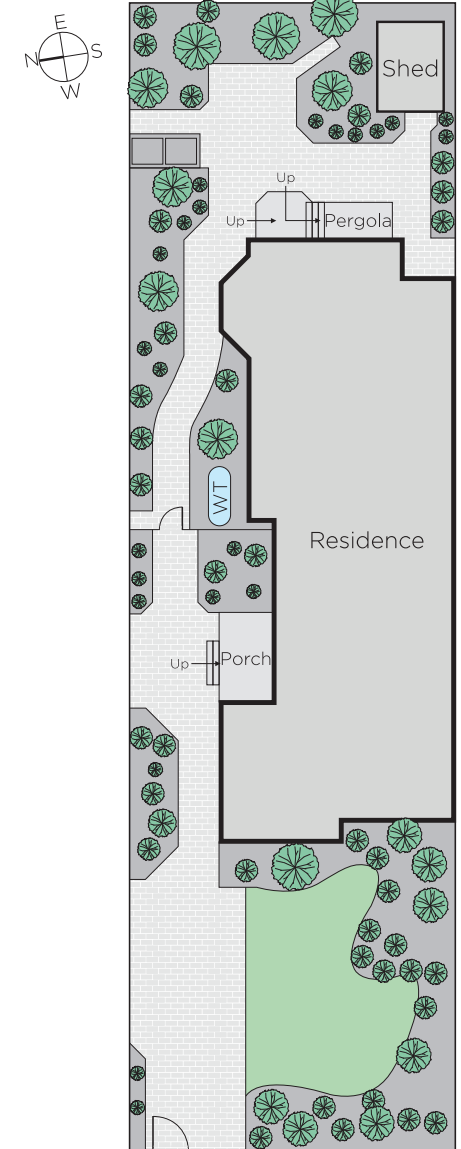
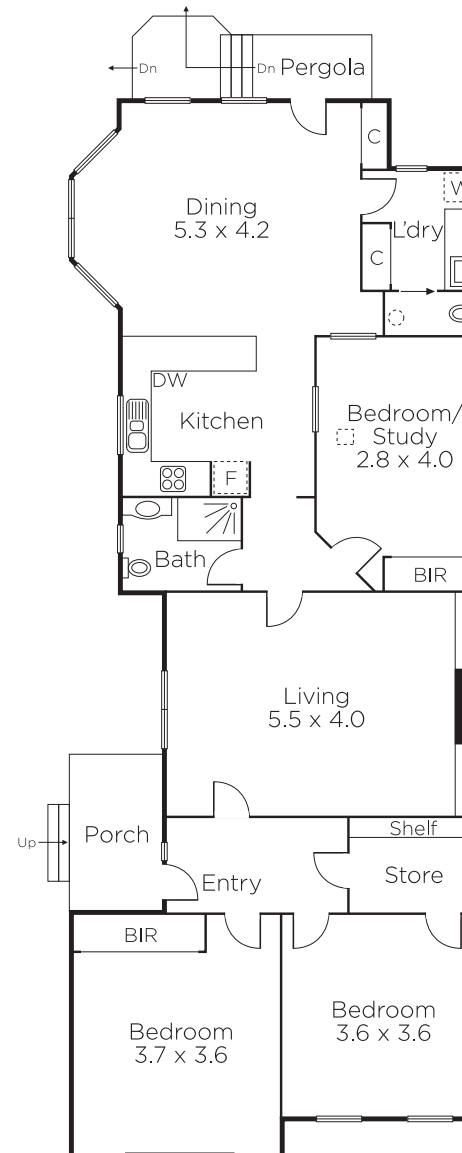
Fraser Cahill 0400 592 572

Hugh Tomlinson 0409 427 483

Samantha Kallend 0478 580 797

1111 High Street Armadale
marshallwhite.com.au


MARSHALLWHITE



Disclaimer: Information provided is believed to be accurate as at the date of printing, no responsibility is taken for any errors or omissions. It is your responsibility to obtain independent, professional advice. Personal information collected from you is for security purposes and to contact you should the property sell prior to auction. We may use this information to provide you with other real estate services including referrals to authorised financial services' providers. Visit our website at www.marshallwhite.com.au for our privacy policy.