



623sqm
(approx.)


MARSHALLWHITE

4 Alta Street
Canterbury



Future Potential on the Hassett Estate

A coveted location on the leafy Hassett Estate provides an enticing background for this classic late 1940s brick home. The home offers a opportunity to renovate/extend to provide new living areas in keeping with today's expectations. Or alternatively a perfect site for a luxurious family residence (STCA). The light-filled interior features a sitting/dining, 2-bdrs, bath, kitchen/ meals plus sunroom. A deep rear garden has an external bungalow & workshop. The vendor is unable to warrant the rear bungalow complies with the covenant over the property. The purchaser assumes any risk arising from non compliance

2 1 3

Auction Saturday 27th October at 11.30am

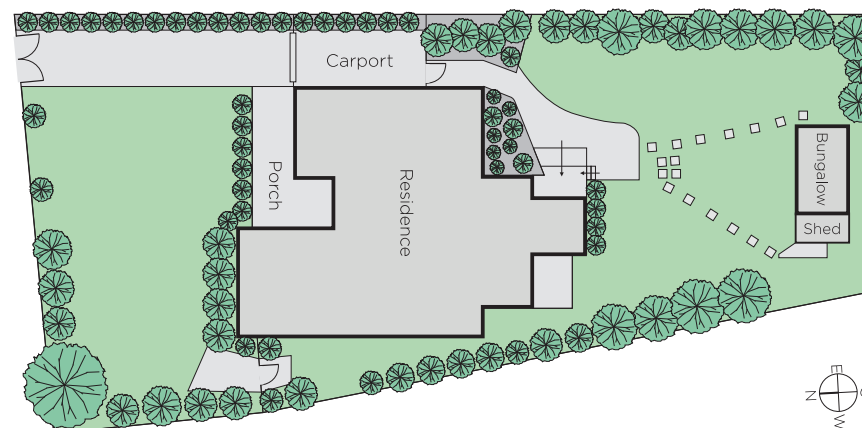
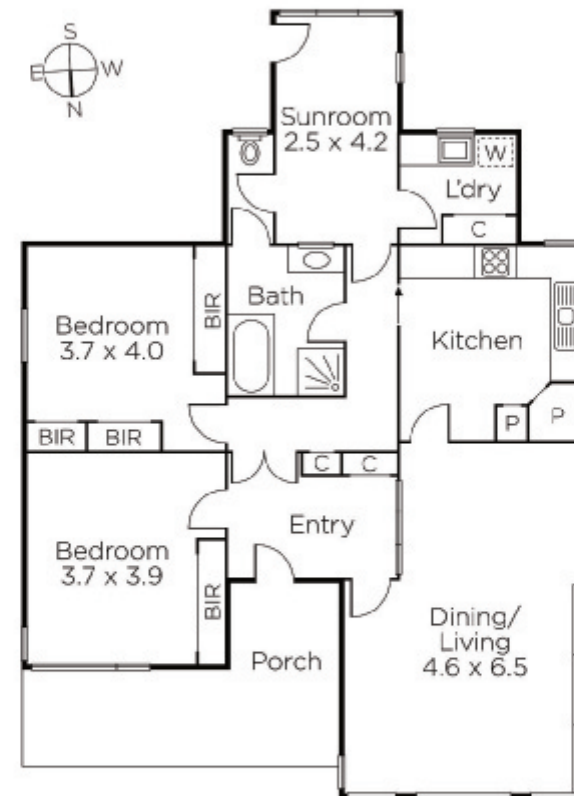
Andrew Gibbons
0407 577 007

Davide Lettieri
0414 018 707

Cameron Edgoose
0438 064 212

MARSHALLWHITE

801 Glenferrie Road, Hawthorn



Disclaimer: Information provided is believed to be accurate as at the date of printing, no responsibility is taken for any errors or omissions. It is your responsibility to obtain independent, professional advice. Personal information collected from you is for security purposes and to contact you should the property sell prior to auction. We may use this information to provide you with other real estate services including referrals to authorised financial services providers. Visit our website at www.marshallwhite.com.au for our privacy policy.