



99


MARSHALLWHITE
ONE
3/99 Brougham Street
Kew



‘Brougham Heights’: Boutique Junction Lifestyle

This generous, two bedroom, older-style apartment has been stylishly up-dated to present a refined and light-filled home in a boutique block that offers superior living or investing near Kew Junction and the beautiful expanses of Studley Park.

Light and airy throughout, the home’s granite kitchen/meals flows to a large, warm and welcoming lounge room, whilst each of the bedrooms is spacious with mirror robes, the bathroom is marble and removed from both the WC as well as the laundry. Also features secure parking, intercom entry, a marble laundry, parquet floors and a pretty balcony. Just a short stroll from the Junction with all its cafes, restaurants, shops, bars and public transport options that can have you in the CBD in a matter of minutes, this premium location is in the heart of Melbourne’s premier school district and also well positioned for easy access to pristine Yarra parkland.

3-99broughamstreet-kew.com

2 1 1

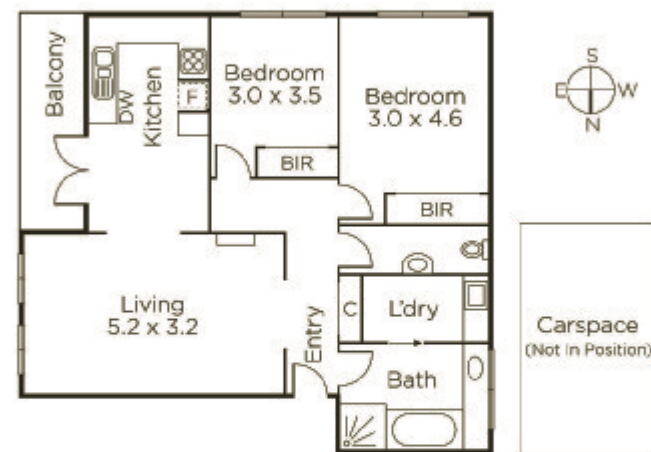
Auction Saturday 5th May at 10.30am

Ash Sachdev 0402 425 661

Danny See 0402 533 853

801 Glenferrie Road Hawthorn

9822 9999 mwone.com.au




MARSHALLWHITE
ONE

Disclaimer: Information provided is believed to be accurate as at the date of printing, no responsibility is taken for any errors or omissions. It is your responsibility to obtain independent, professional advice. Personal information collected from you is for security purposes to contact you should the property sell prior to auction. We may use this information to provide you with other real estate services including referrals to authorized financial services providers. Visit our website at www.mwone.com.au for our privacy policy.