




MARSHALLWHITE

39 Llaneast Street
Armadale



Little Classic

Ripe for renovation, this Edwardian timber villa, sited on a prized allotment of 387sqm approx. in the "traffic free" cul de sac of Llaneast St just minute's to Glenferrie Rd shops, transport & schools offers a fabulous opportunity to extend & update. Occupied by the same family for the past 50 years, has much of its period detailing still intact & boasts wrap around verandah, decorative timber fretwork, wide hallway, bay window, high ceilings & open fire places. Comprising a sitting room with gas fire & split heating/cooling system, 3 bedrooms & kitchen with scullery & breakfast room, the home provides comfortable accommodation in the short term with exciting prospects for the future. Land: 387sqm approx.

39llaneaststreet-armadale.com

3 1 2

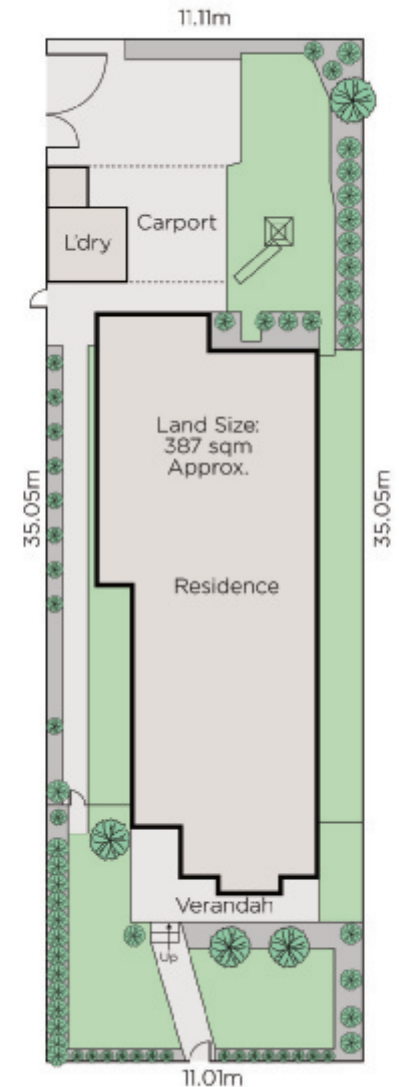
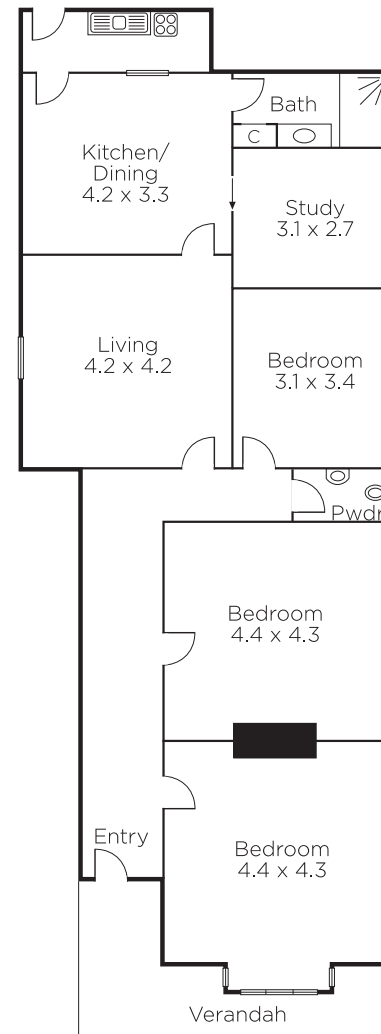
Auction Saturday 14th October at 12.30pm

Hugh Tomlinson 0409 427 483

James Tomlinson 0408 350 684

Rae Tomlinson 0418 336 234

1111 High Street Armadale
marshallwhite.com.au



Disclaimer: Information provided is believed to be accurate as at the date of printing, no responsibility is taken for any errors or omissions. It is your responsibility to obtain independent, professional advice. Personal information collected from you is for security purposes and to contact you should the property sell prior to auction. We may use this information to provide you with other real estate services including referrals to authorised financial services' providers. Visit our website at www.marshallwhite.com.au for our privacy policy.



MARSHALLWHITE