



MARSHALLWHITE

3/9 Hopetoun Road
Toorak



Elite Single Level Elegance

This single level garden residence's generously proportioned dimensions provide idyllic low maintenance living in an exclusive setting near High St's shops & restaurants & trams. Highlighting the impressive proportions inside, wide hall introduces an expansive living/dining served by a separate kitchen & opening to a northeast garden. A spacious main bedroom with en-suite & walk in robe is matched by a 2nd double bedroom with built in robe & bathroom. Enjoying its own street frontage, includes alarm, ducted heating, split system air-conditioning, laundry, storage & double garage.

3-9hopetounroad-toorak.com



Auction Saturday 23rd June at 10.30am

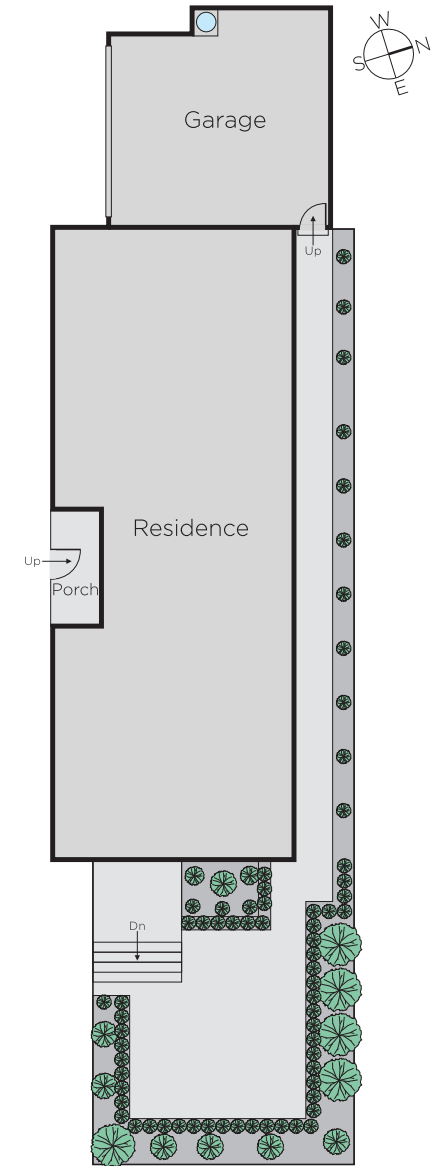
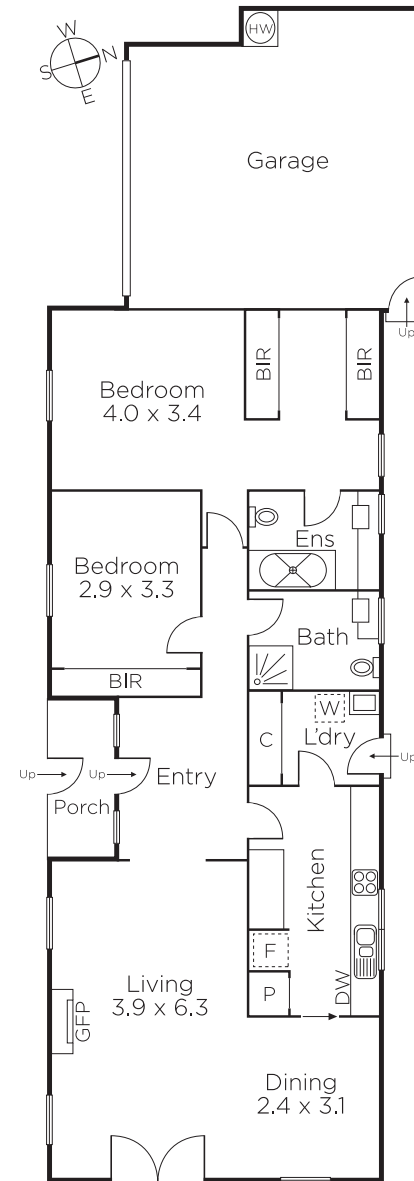
James Tomlinson
0408 350 684

Hugh Tomlinson
0409 427 483

Rae Tomlinson
0418 336 234


MARSHALLWHITE

1111 High Street, Armadale



Disclaimer: Information provided is believed to be accurate as at the date of printing, no responsibility is taken for any errors or omissions. It is your responsibility to obtain independent, professional advice. Personal information collected from you is for security purposes and to contact you should the property sell prior to auction. We may use this information to provide you with other real estate services including referrals to authorised financial services providers. Visit our website at www.marshallwhite.com.au for our privacy policy.