

SANDRINGHAM  
YACHT CLUB



MARSHALLWHITE

39 Bridge Street  
Hampton



## Potential and Character on 639sqm approx.

Bring a new vision to this north-facing address and love living near the beach, shops and Sandringham Primary School. Classic "Wingara" on 639sqm approx. has potential to become an exclusive oasis. There's room to extend into the deep north-facing garden, add a pool and still have room for play space. Or start again and custom-design the home you've always wanted STCA. Original character and today's essentials include a lounge and large dining room, north-facing family room, three bedrooms, two renovated bathrooms, hydronic heating, cellar, and remote-control car gate.

3 2 2

Auction Saturday 15th December at 10.30am

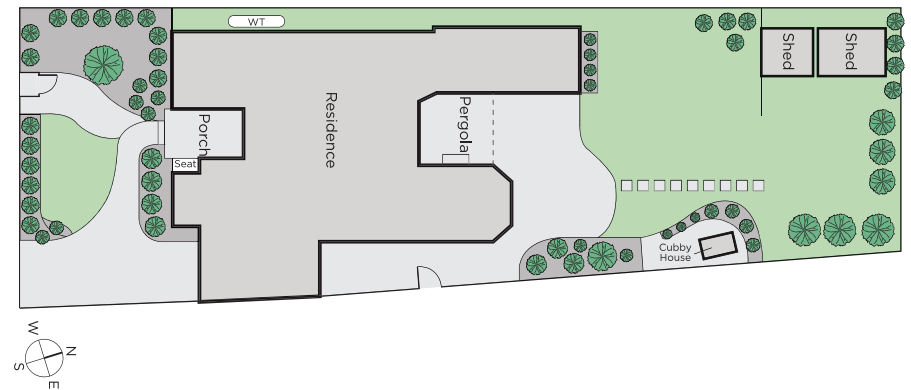
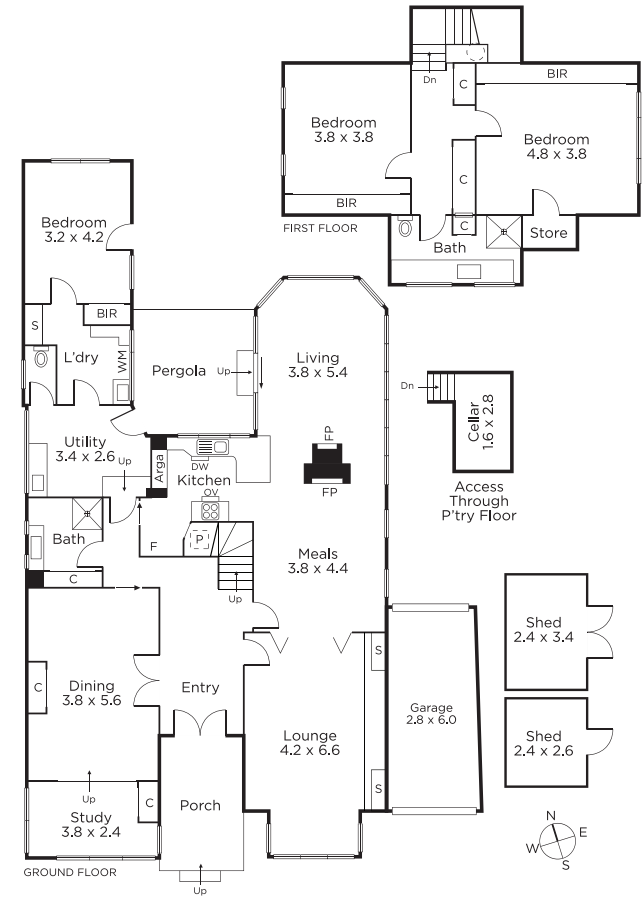
**Andre O'Brien**  
0437 917 007

**Andrew Campbell**  
0419 366 545

**Jack Johnstone**  
0426 241 841

**MARSHALLWHITE**

225 Bay Street, Brighton



Disclaimer: Information provided is believed to be accurate as at the date of printing, no responsibility is taken for any errors or omissions. It is your responsibility to obtain independent, professional advice. Personal information collected from you is for security purposes and to contact you should the property sell prior to auction. We may use this information to provide you with other real estate services including referrals to authorised financial services providers. Visit our website at [www.marshallwhite.com.au](http://www.marshallwhite.com.au) for our privacy policy.