



MARSHALLWHITE

38B Warleigh Grove  
Brighton



## Effortless Indulgence Metres to Bay Street

Premium living in an ultra-convenient location is the epitome of Brighton lifestyle living. Near shops, supermarket, cafés and trains, everything you need is a stroll away. Prestige three-bedroom townhouse is designed with exacting refinement, on show in the north-facing living and dining zone, sun-filled courtyard, upstairs retreat, Miele kitchen and butler’s pantry, and upstairs terraces. Excellent features in the main bedroom include a dressing area, freestanding bath in the ensuite, and access to outdoors. Outstanding functionality with a generous double garage, extensive storage, oak floors and security entry.

3 2 2

Auction Saturday 10th November at 10am

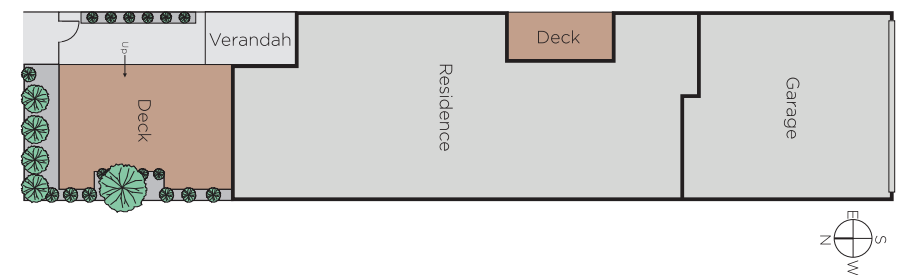
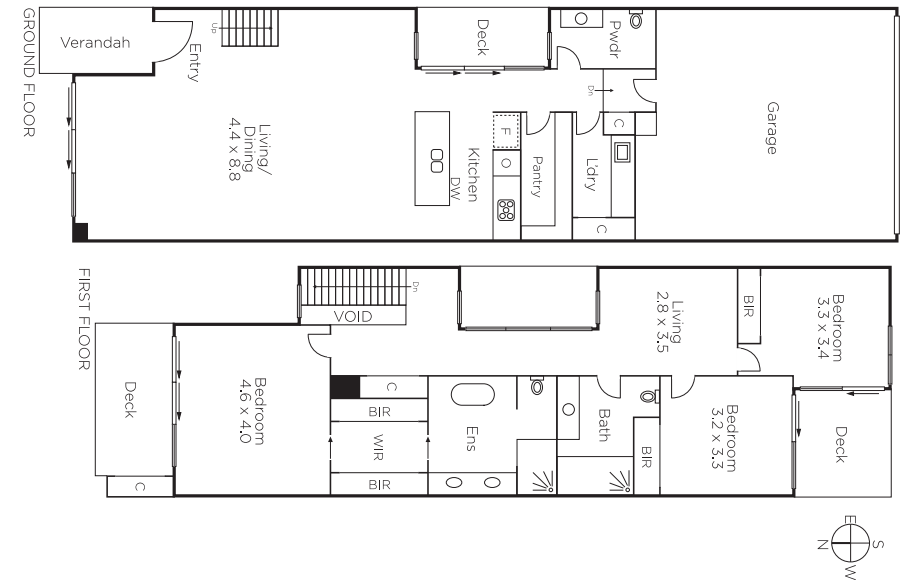
**Kate Strickland**  
0400 125 946

**Dahli Woosnam**  
0435 505 309

**Matthew Pillios**  
0408 145 982

  
**MARSHALLWHITE**

225 Bay Street, Brighton



Disclaimer: Information provided is believed to be accurate as at the date of printing, no responsibility is taken for any errors or omissions. It is your responsibility to obtain independent, professional advice. Personal information collected from you is for security purposes and to contact you should the property sell prior to auction. We may use this information to provide you with other real estate services including referrals to authorised financial services providers. Visit our website at [www.marshallwhite.com.au](http://www.marshallwhite.com.au) for our privacy policy.