



MARSHALLWHITE
ONE

3/794 Riversdale Road
Camberwell



Serenity, Comfort and Wonderful Convenience

Filled with natural light, this proudly maintained, two bedroom villa is one of only four and promises an appealing sense of serenity in a highly central location. Thoughtfully designed, the home's kitchen/meals is semi-attached to a large lounge/dining, whilst also offering a flow to a rear paved courtyard that is a lovely place for a cup of tea or a meal. A remote access, lock-up garage allows you the luxury of leaving the car at home and catching the tram, whilst each bedroom has fitted robes and there is reverse cycle air conditioning as well. With walking distance to Middle Camberwell supermarkets and cafes, the home is also just moments to Willison and Riversdale train station, Camberwell Junction with its wonderful cafes, restaurants, shopping and cinemas, plus there are fine schools nearby, beautiful local parks and a tram at your doorstep.

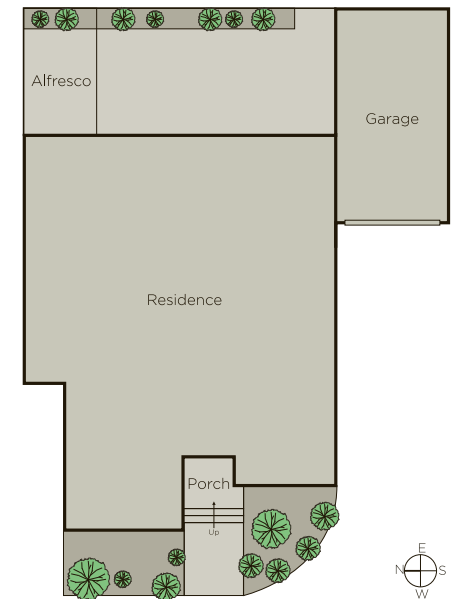
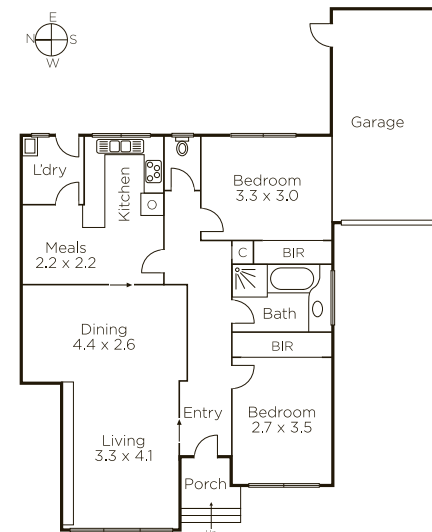
3-794riversdaleroad-camberwell.com



Private Sale

Danny See 0402 533 853
Ash Sachdev 0402 425 661

801 Glenferrie Road Hawthorn
9822 9999 mwone.com.au




MARSHALLWHITE
ONE

Disclaimer: Information provided is believed to be accurate as at the date of printing, no responsibility is taken for any errors or omissions. It is your responsibility to obtain independent, professional advice. Personal information collected from you is for security purposes to contact you should the property sell prior to auction. We may use this information to provide you with other real estate services including referrals to authorized financial services providers. Visit our website at www.mwone.com.au for our privacy policy.