



MARSHALLWHITE

37 Wellington Street
Kew





Evocative Charm, Exceptional Style

Impressively set well back within a deep 792 sqm flat, north-facing garden. This distinguished brick English style 4 bedroom family home presents a totally captivating blend of wonderful period elegance and stunning contemporary style.

Timber floors add to the light-filled ambience of the entrance hall, generous formal sitting room with a cosy open fire and separate dining room. Vaulted ceilings accentuate the imposing scale of the huge sun-drenched family meals area with an open fireplace and sensational gourmet kitchen appointed with stone benches and European appliances. The living areas seamlessly link the deep north-facing leafy garden. Enjoying city views, the beautiful main bedroom with walk in robe and designer en-suite with a freestanding bath is matched by three additional bedrooms with built in robes and a stylish central family bathroom.

Enviably situated close to the area's finest schools, Kew Junction shops and trams, it also includes glorious leadlight windows, a powder-room, laundry, garden shed, ample storage and 3 car off street parking.

37wellingtonstreet-kew.com

4  2  3 

Auction Saturday 19th August at 12.30pm

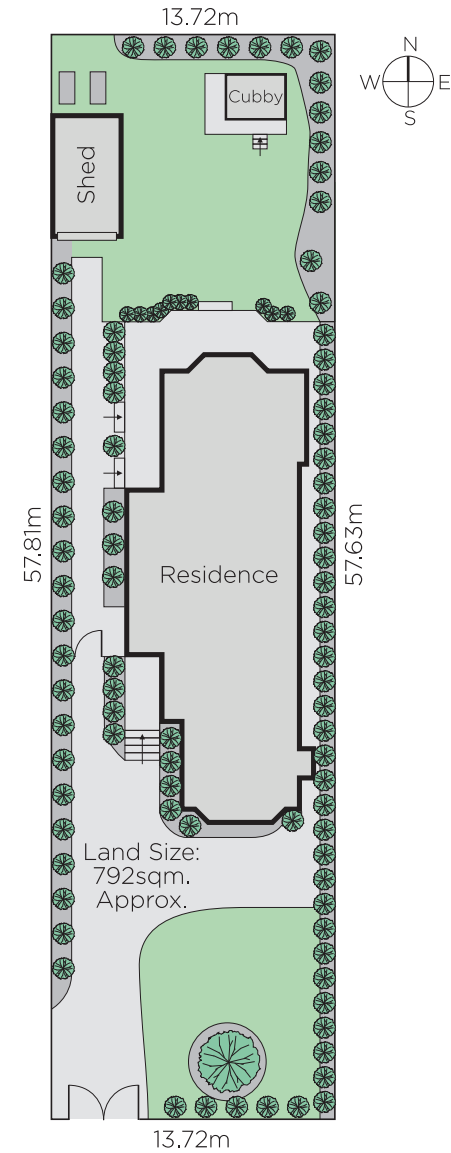
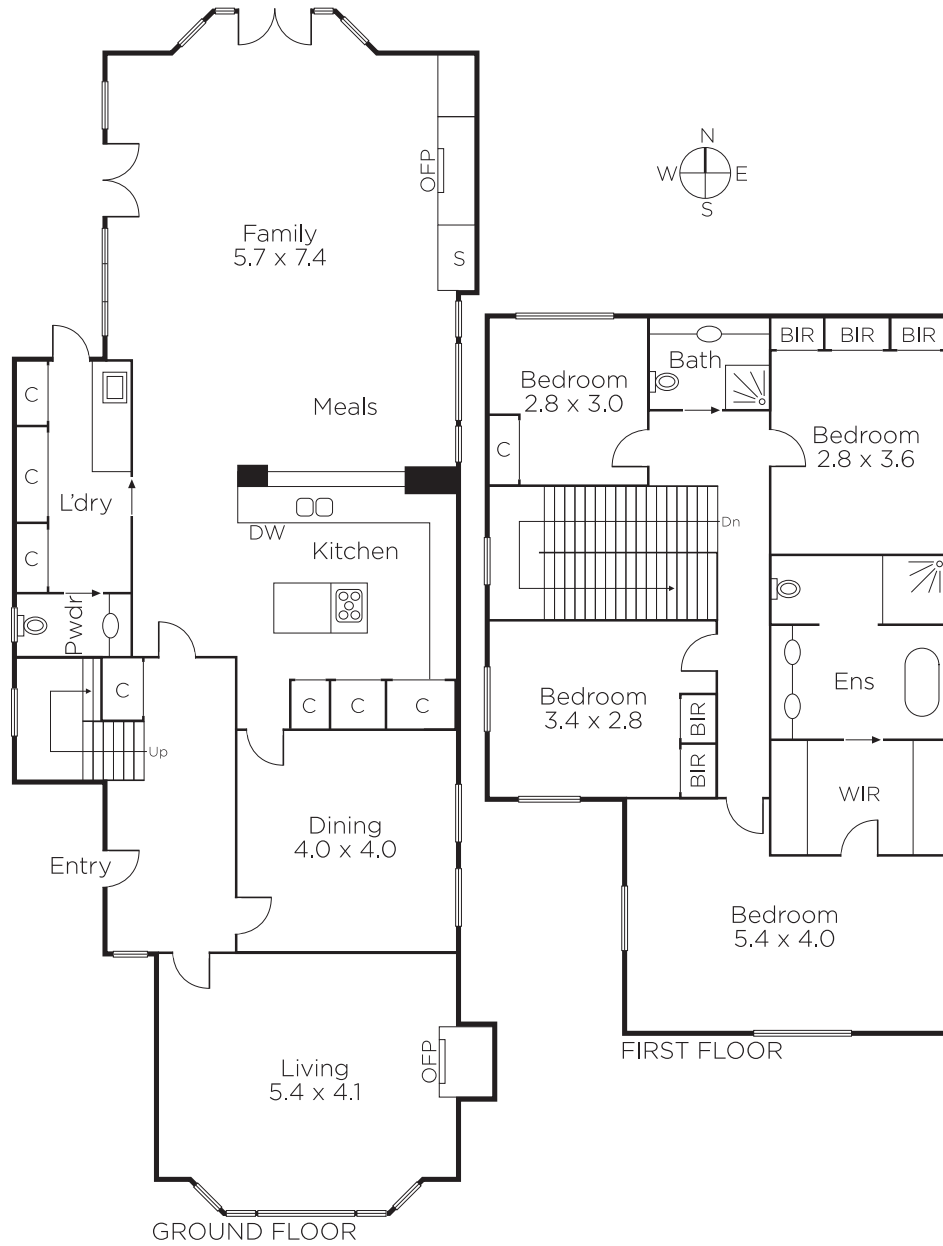
Nicholas Franzmann 0412 247 175

Mark Sproule 0408 090 205

801 Glenferrie Road Hawthorn

marshallwhite.com.au


MARSHALLWHITE



Disclaimer: Information provided is believed to be accurate as at the date of printing, no responsibility is taken for any errors or omissions. It is your responsibility to obtain independent, professional advice. Personal information collected from you is for security purposes and to contact you should the property sell prior to auction. We may use this information to provide you with other real estate services including referrals to authorised financial services' providers. Visit our website at www.marshallwhite.com.au for our privacy policy.