



37 Latham Street
Bentleigh East



North gardens, 706sqm & a Zoned Family Plan!

buxton

37 Latham Street Bentleigh East



4 2 1

Find your place in the sun with great accommodation, a family-wise location & sun-soaked surrounds on approx. 706sqm! Starring separate lounge & dining, an expansive family zone & a private master-suite (with a huge spa-ensuite, WIR & a sun-catching northerly bay-window), this r/c air-con'd 4 bedroom, 2 bathroom home features a st-st Euro range, gas-heating, parquetry, an auto-garage & a family-wise location close to parks & GESAC in the Coatesville PS Zone.

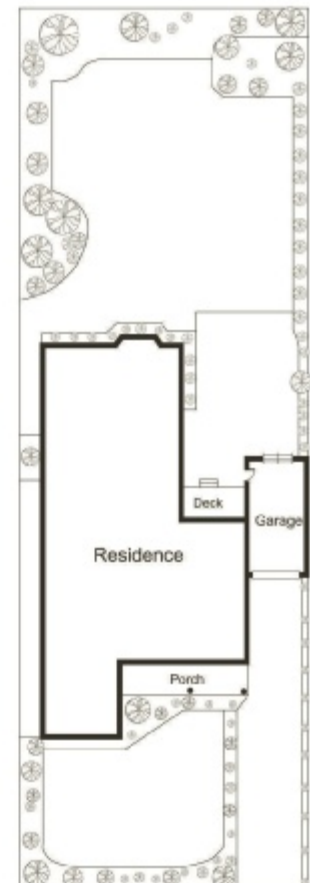
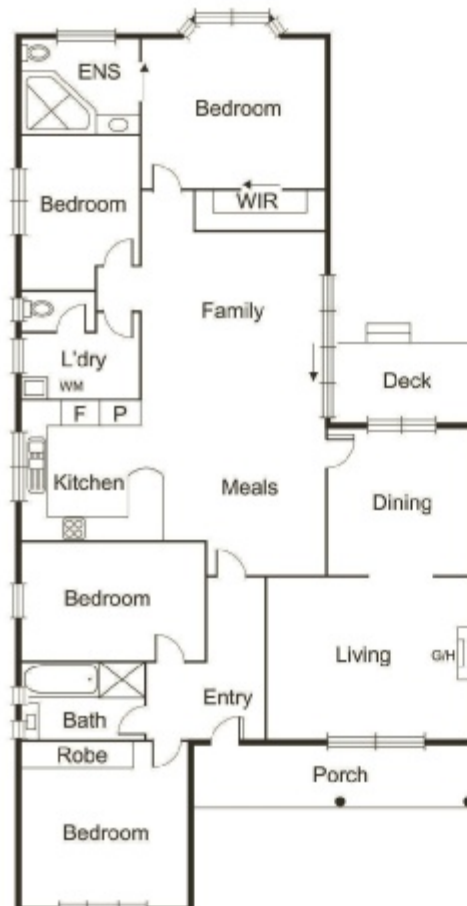
Auction

Saturday 27 October - 10.30am

Contact

Ivan Blow 0413 163 914
ivanblow@buxton.com.au

Natalie Tan 0412 778 764
ntan@buxton.com.au



We have obtained all information in this document from sources we believe to be reliable; however, we cannot guarantee its accuracy. Prospective purchasers are advised to carry out their own investigations.

