



37



MARSHALLWHITE

37 Irymple Avenue
Kew East





Sun Drenched Style, Art Deco Charm

Superbly presented and streaming with natural light, this inviting single level Art Deco residence displays a wonderful blend of period charm and contemporary style through cleverly zoned family dimensions. A sensational location just moments from Hays Paddock, leading private and public schools, High St trams, Harp Village and freeway access further accentuates the significant family appeal.

Beautiful ornate ceilings and timber floors define the wide entrance hall, glorious sitting room with open fireplace and generous light-filled living/dining room. The modern kitchen featuring stone benches and European appliances and a study or retreat open to the deep northwest private garden with covered entertaining terrace or carport. The main bedroom with stylish ensuite and walk in robe is set apart from two additional double bedrooms and a second bright bathroom.

Ideal to enjoy now but also offering scope to extend in the future, it includes a laundry and garden shed. Land size: 695sqm (approx.)

37rympleavenue-keweast.com

3  2  1 

Auction Saturday 12th August at 10.30am

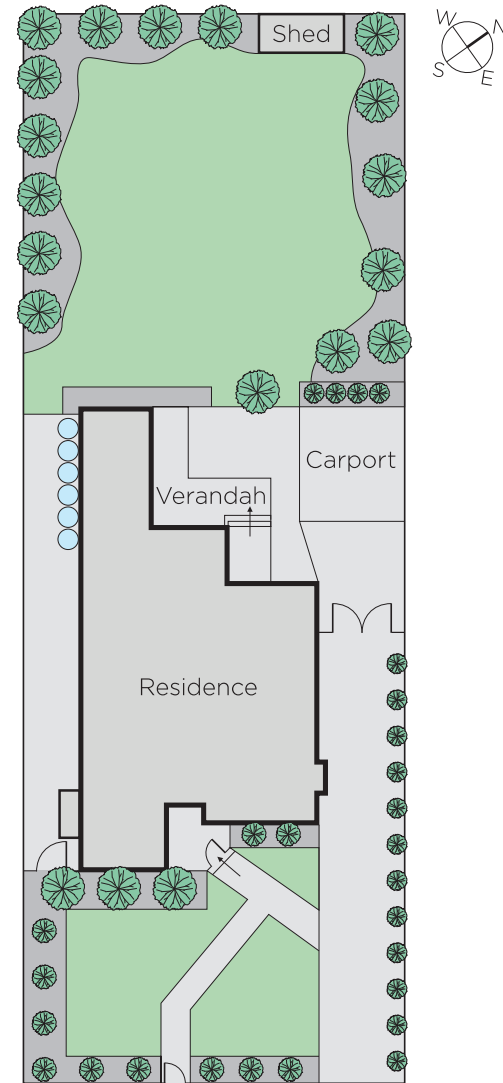
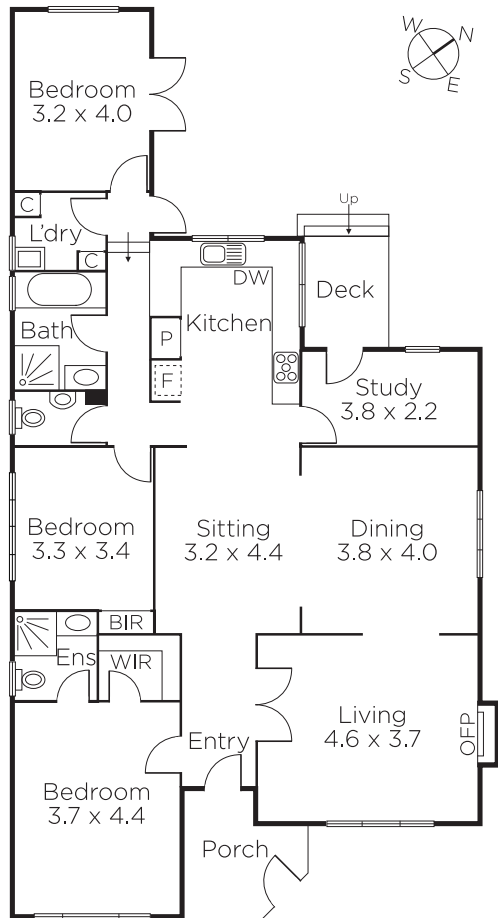
Mark Sproule 0408 090 205

Nikki Van Gulick 0419 325 911

801 Glenferrie Road Hawthorn

marshallwhite.com.au


MARSHALLWHITE



Disclaimer: Information provided is believed to be accurate as at the date of printing, no responsibility is taken for any errors or omissions. It is your responsibility to obtain independent, professional advice. Personal information collected from you is for security purposes and to contact you should the property sell prior to auction. We may use this information to provide you with other real estate services including referrals to authorised financial services' providers. Visit our website at www.marshallwhite.com.au for our privacy policy.