




MARSHALLWHITE
ONE

36/4 Seisman Place
Port Melbourne



New York Sophistication Meets Resort-Style Luxury

Undertaken by the renowned Shayna Blaze the inspired renovation of this spectacular, one bedroom apartment has introduced an industrial, New York-style sophistication to compliment its breath-taking city views and resort-style facilities. No detail has been overlooked in this exclusive home where an open-plan Bosch-equipped kitchen/meals/living exudes a contemporary commercial feel, whilst a concealed study nook brilliantly blends practicality and central heating/cooling offers year round comfort. The bathroom is flawless in this highly secure home with two video entry points, basement parking, storage cage and elevator access, as well as two communal swimming pools, a gymnasium, spa and huge gardens. Nestled between Bay St, the waterfront and Gasworks Park, this is a location with a diverse and cosmopolitan lifestyle appeal.

36-4seismanplace-portmelbourne.com 1 1 1

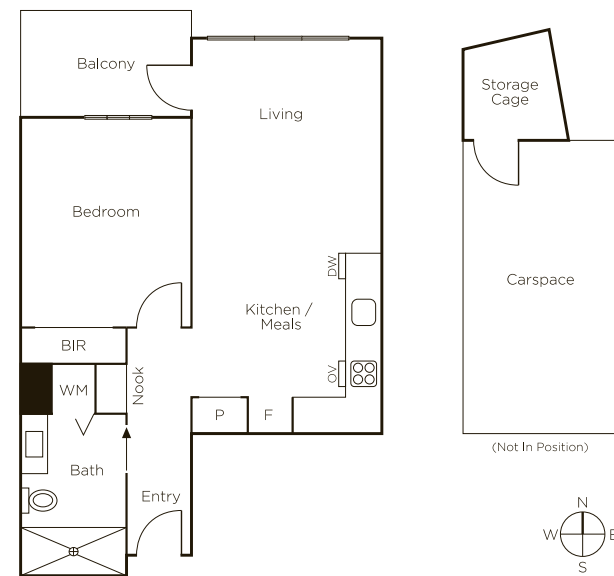
Auction Saturday 7th September at 1.30pm

Sarah Wood 0408 902 827

Bradley Steinbach 0403 539 038

101 Dundas Place Albert Park

9822 9999 mwone.com.au



MARSHALLWHITE
ONE

Disclaimer: Information provided is believed to be accurate as at the date of printing, no responsibility is taken for any errors or omissions. It is your responsibility to obtain independent, professional advice. Personal information collected from you is for security purposes to contact you should the property sell prior to auction. We may use this information to provide you with other real estate services including referrals to authorized financial services providers. Visit our website at www.mwone.com.au for our privacy policy.