



MARSHALLWHITE  
ONE

3/45 Wattle Valley Road  
Canterbury



## Prestigious Location, Renovated Delight

Offering a prestigious Canterbury address and Maling Road lifestyle, this large tastefully refurbished and wonderfully private two bedroom plus study villa is one of only three. Flawlessly presented with a modern European kitchen which includes an induction cooktop, integrated dishwasher and stone benches whilst the vast open-plan living/dining area is bathed in natural light with garden vistas. The bathroom is a superb designer domain, whilst the master bedroom suite features a huge study area as it flows to a rear deck that is perfect for outdoor relaxing. Also features carpet in the master suite and robes in both bedrooms, reverse cycle air conditioning, powder room, separate laundry, remote lock-up garage, solar panels and gorgeous polished timber floors. Immerse yourself in the Maling Road shopping strip and beautiful local gardens, with Canterbury Train Station around the corner and Camberwell Junction moments away.

3-45wattlevalleyroad-canterbury.com 2 1 1

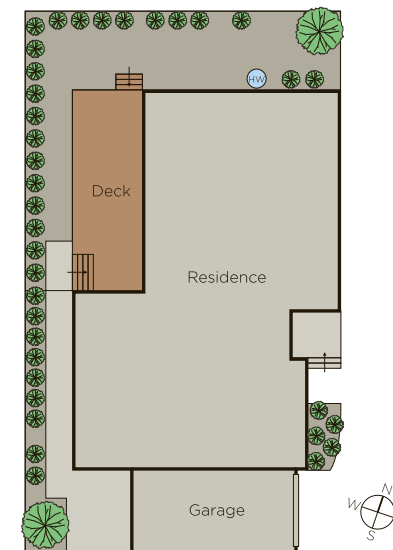
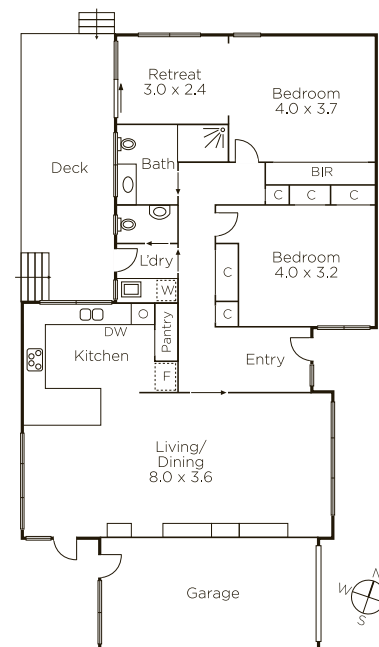
Auction Saturday 5th May at 12.30pm

Danny See 0402 533 853

Désirée Wakim 0412 336 266

801 Glenferrie Road Hawthorn

9822 9999 mwone.com.au



MARSHALLWHITE  
ONE

Disclaimer: Information provided is believed to be accurate as at the date of printing, no responsibility is taken for any errors or omissions. It is your responsibility to obtain independent, professional advice. Personal information collected from you is for security purposes to contact you should the property sell prior to auction. We may use this information to provide you with other real estate services including referrals to authorized financial services' providers. Visit our website at [www.mwone.com.au](http://www.mwone.com.au) for our privacy policy.