




MARSHALLWHITE

343 Waverley Road
Malvern East





Outstanding Family Living in Prestige Location

Beyond an immaculate façade, this impressive c1920's residence presents a remarkable blend of traditional detail and exceptional living with premier family credentials. Enhanced by Art Deco ceilings and leadlight windows, light-filled open-plan living and dining spaces showcase a striking gas fireplace and bespoke cabinetry. Combined with a well-appointed kitchen complete with stone benchtops and a picturesque al fresco entertainment space overlooking a lush garden, this spacious family home delivers a variety of sophisticated entertaining opportunities. A luxurious main bedroom comprising custom built-in robes and stylish feature wallpaper and a chic second bedroom with built-in robes, share a central bathroom. An additional generous bedroom occupies a delightful extension with built-in robes and enjoys use of a second bathroom. Also includes formal sitting space, plantation shutters, well-equipped laundry, security system, tandem garage with work space and extensive off-street parking.

Land size: 735sqm approx.

343waverleyroad-malverneast.com

3 2 2

Auction Saturday 9th September at 11.30am

Daniel Wheeler 0411 676 058

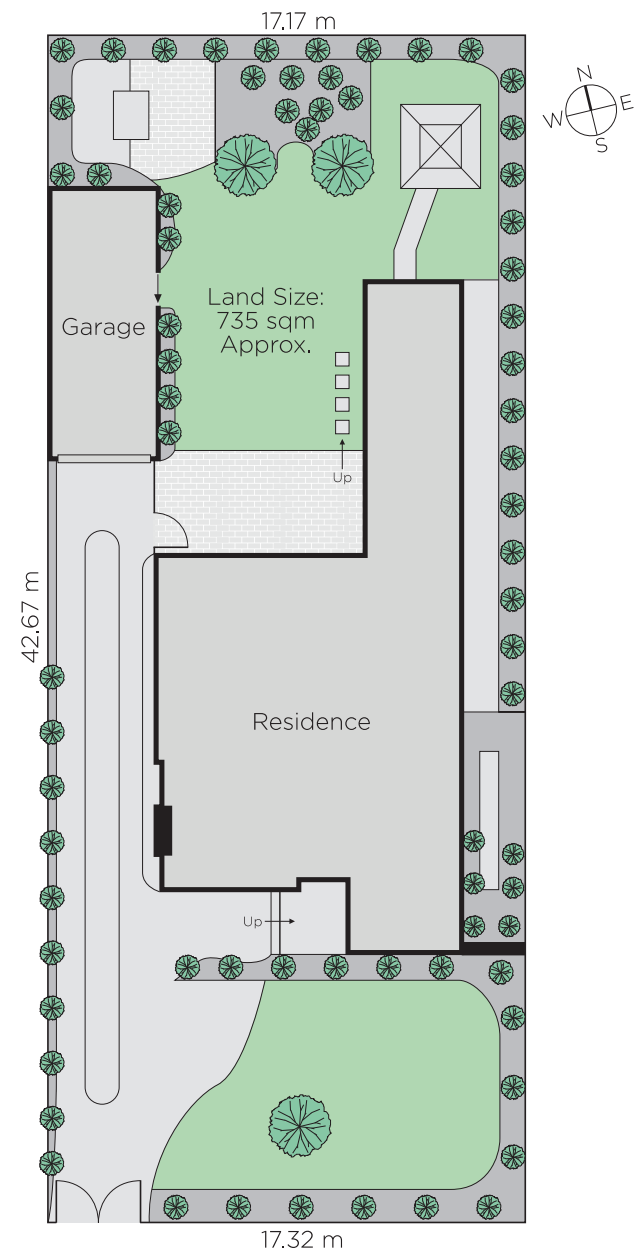
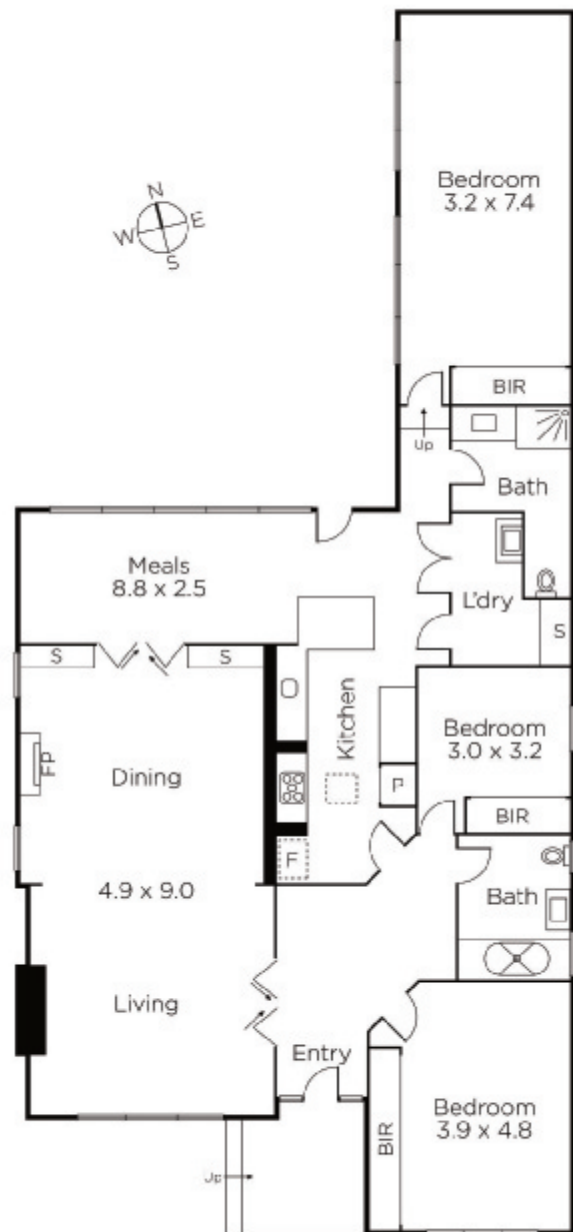
Clare Moloney 0401 546 441

Justin Krongold 0403 163 355

1111 High Street Armadale

marshallwhite.com.au


MARSHALLWHITE



Disclaimer: Information provided is believed to be accurate as at the date of printing, no responsibility is taken for any errors or omissions. It is your responsibility to obtain independent, professional advice. Personal information collected from you is for security purposes and to contact you should the property sell prior to auction. We may use this information to provide you with other real estate services including referrals to authorised financial services' providers. Visit our website at www.marshallwhite.com.au for our privacy policy.