



MARSHALLWHITE

34 Harts Parade
Hawthorn East






Period Style with Contemporary Polish

Introduced by a picket fence with lush and pretty front garden this immaculately presented semi-detached Edwardian cottage creates a memorable first impression, whilst combining sympathetically retained classic period features including coloured leadlight glass and decorative ceilings with roses, cleverly blended into a contemporary living environment which features quality fittings and finishes. Ideally located in a most desirable tree-lined street close to the Tooronga shopping complex, Camberwell Junction or local shops & excellent schools.

The instantly appealing fresh white interior comprises a long arched light-filled hallway opening to a lounge/bedroom, three additional bedrooms, main with ensuite, a sparkling bathroom with concealed laundry and a loft retreat. Through to a generous living and dining area highlighted by Cathedral ceilings plus a sleek kitchen with Euro appliances flowing to a covered alfresco dining area and leafy, courtyard garden with gas BBQ. Other features include ducted heating and cooling, R/C air conditioner & gas heater, Plantation shutters, 6 skylights, WIFI stations, roof & garden storage and OSP rear lane access.

4  2  1 

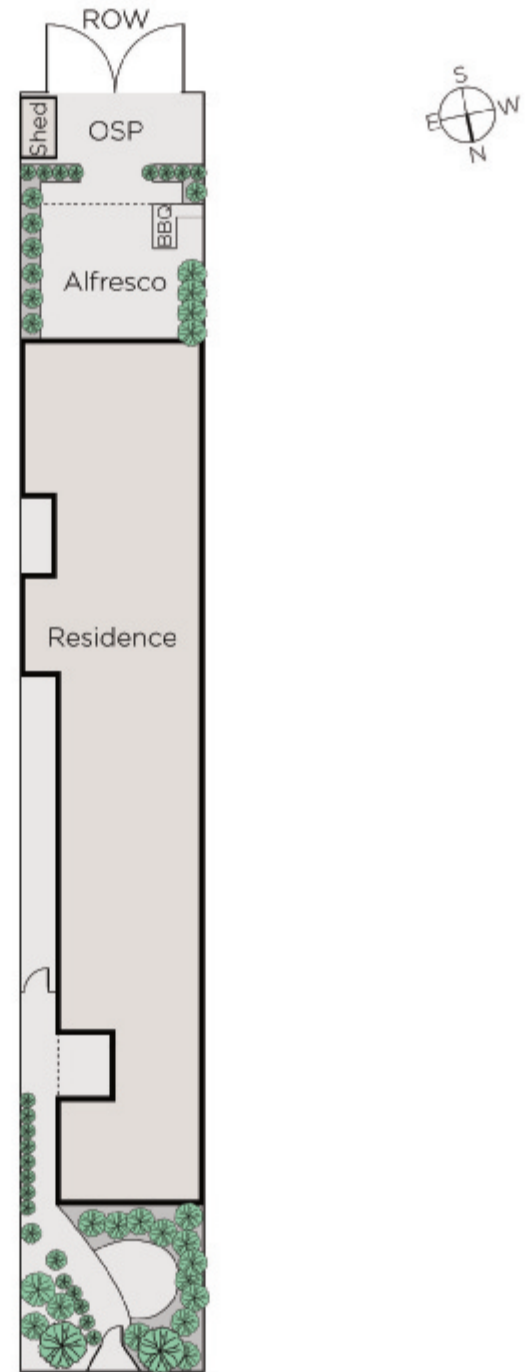
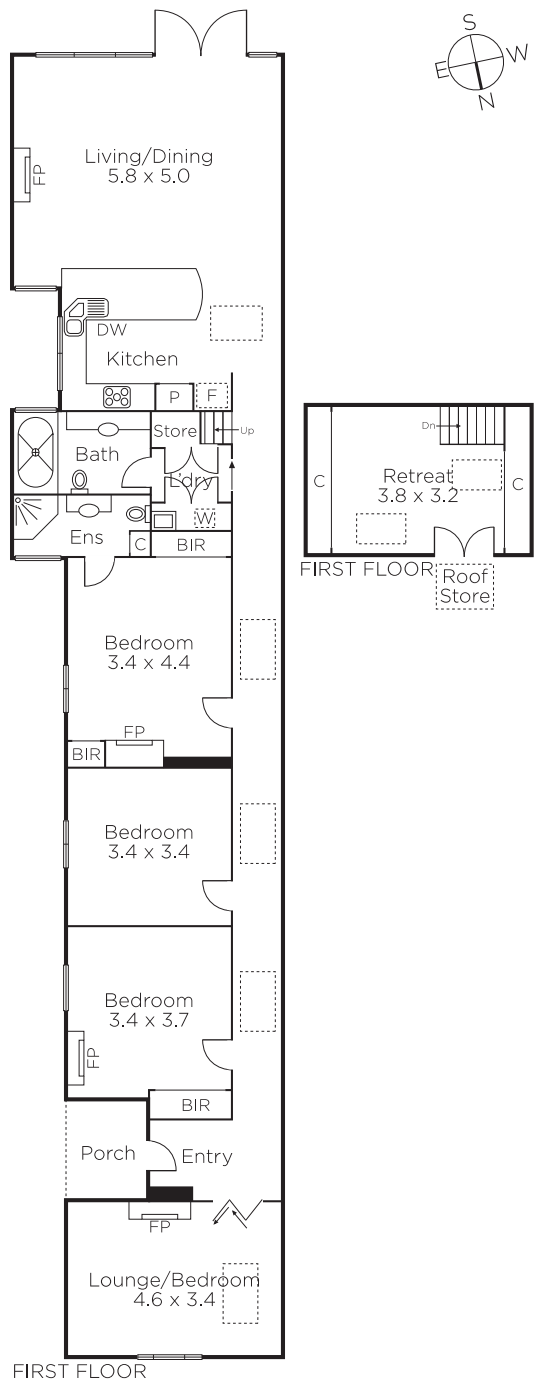
Auction Saturday 8th December at 9.30am

Davide Lettieri
0414 018 707

Andrew Gibbons
0407 577 007

Ellie Scala
0433 356 342


MARSHALLWHITE
801 Glenferrie Road, Hawthorn



Disclaimer: Information provided is believed to be accurate as at the date of printing, no responsibility is taken for any errors or omissions. It is your responsibility to obtain independent, professional advice. Personal information collected from you is for security purposes and to contact you should the property sell prior to auction. We may use this information to provide you with other real estate services including referrals to authorised financial services' providers. Visit our website at www.marshallwhite.com.au for our privacy policy.