



MARSHALLWHITE
ONE

33/62 Wellington Street
St Kilda



Size and Substance on St. Kilda Hill

This extraordinarily large, light and airy one bedroom plus study apartment enjoys a highly central St. Kilda Hill position within walking distance of Chapel St and Fitzroy St. Set amidst generous grounds with terrific security, this first floor home is an outstanding base for a sophisticated inner bayside lifestyle or an astute investment.

Flowing easily to a balcony, the home's open-plan living features a kitchen with granite benches and timber cabinetry, whilst the bedroom has mirrored robes and there is a European laundry. Fully secure with basement parking, double intercom entries and communal grounds, this building not only delivers peace-of-mind in this vibrant location, but also an enduring appeal.

Walk to some of Melbourne's finest bars, cafes, restaurants and nightlife as well as city-bound transport and Albert Park Lake as well.

33-62wellingtonstreet-stkilda.com



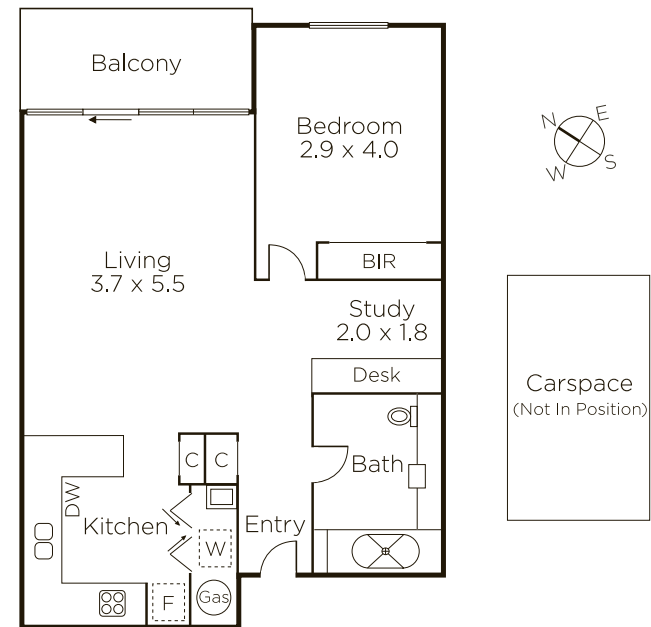
Auction Saturday 10th February at 1.30pm

Bradley Steinbach 0403 539 038

101 Dundas Place Albert Park

Jaymee Ntentis 0478 724 222

9822 9999 mwone.com.au



Disclaimer: Information provided is believed to be accurate as at the date of printing, no responsibility is taken for any errors or omissions. It is your responsibility to obtain independent, professional advice. Personal information collected from you is for security purposes to contact you should the property sell prior to auction. We may use this information to provide you with other real estate services including referrals to authorized financial services providers. Visit our website at www.mwone.com.au for our privacy policy.