



33


MARSHALLWHITE
33 Manningtree Road
Hawthorn





Excellence in Family Living

Behind a classic façade, this stunning solid brick Victorian (c.1888) has an impressive architectural renovation. A glorious arched hallway featuring high ceilings & baltic pine floors creates a memorable first impression matched by a beautiful sitting room with slate open fire. Solid spotted gum timber floors flow through the exceptionally spacious living with Jetmaster Heat & Glo fire, dining room with a sleek gourmet kitchen boasting Caesarstone benches, butler's pantry & European appliances. Bi-fold doors open the living to a picturesque private north-facing garden with solar heated pool, BBQ & cabana/gym with kitchenette. The gorgeous main bdrm with Carrara marble fireplace, WIR & chic en-suite, a second double bdrm with open fire and BIR, 3 study nooks & a stylish bathroom are downstairs while a sensational sound proofed children's zone upstairs comprises 3 additional bedrooms with BIR, a large retreat & designer bathroom. An outstanding family domain, it also includes zoned refrigerated A/C & ducted heating, plantation shutters, Bose surround sound, network cabling, laundry chute, storage, automated sun-awning with wind sensor, water system, auto gates & internally accessed auto garage. Land size: 540sqm approx.

6  3  2 

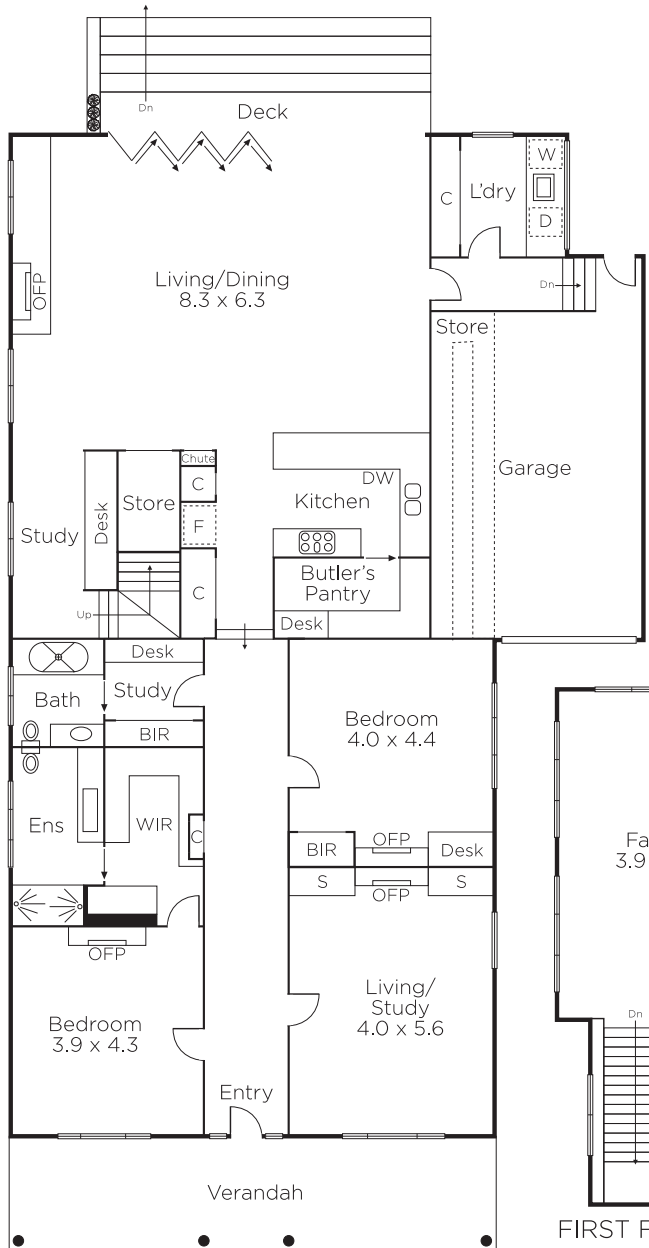
Auction Saturday 24th November at 12.30pm

Stuart Evans
0402 067 710

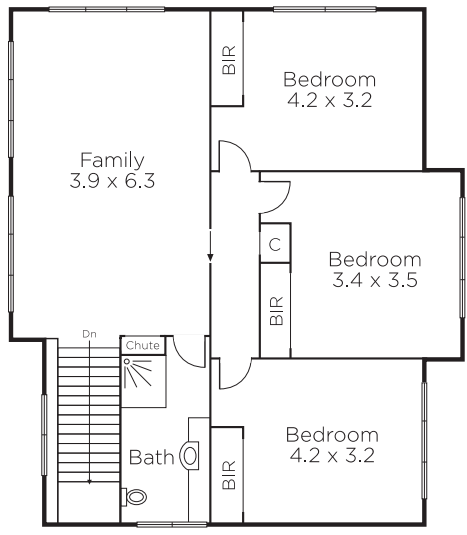
Duane Wolowiec
0418 567 581


MARSHALLWHITE

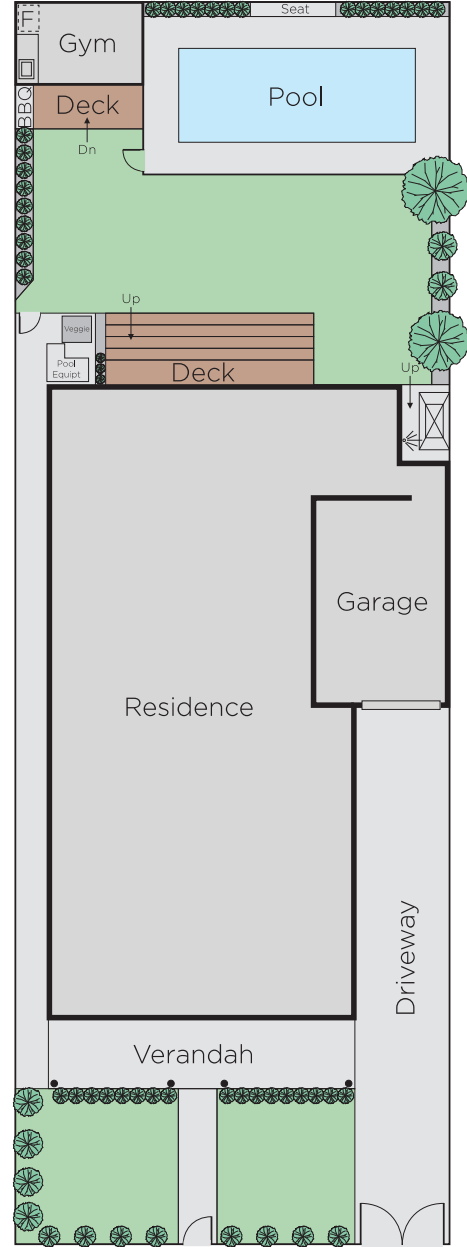
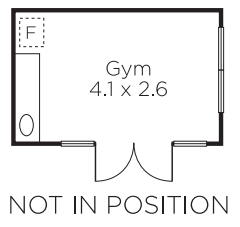
801 Glenferrie Road, Hawthorn



GROUND FLOOR



FIRST FLOOR



Disclaimer: Information provided is believed to be accurate as at the date of printing, no responsibility is taken for any errors or omissions. It is your responsibility to obtain independent, professional advice. Personal information collected from you is for security purposes and to contact you should the property sell prior to auction. We may use this information to provide you with other real estate services including referrals to authorised financial services' providers. Visit our website at www.marshallwhite.com.au for our privacy policy.