



MARSHALLWHITE

329 Richardson Street
Middle Park



Quintessential Middle Park Lifestyle Location

In a premier locale, an elegant Edwardian façade introduces this four-bedroom family residence featuring spacious light-filled living accommodation and exquisite period features in a north facing garden setting. Cathedral ceilings define open-plan living comprising kitchen, sitting and dining areas opening to a timber deck. Includes main ensuite bedroom with walk-in robe. This fine home offers second street frontage to Canterbury Place, plus potential to add studio or garaging (STCA) if desired, to embark on an architect's renovation or extension (STCA) while enjoying its comfortable condition and lifestyle location.

329richardsonstreet-middlepark.com

4 2 1

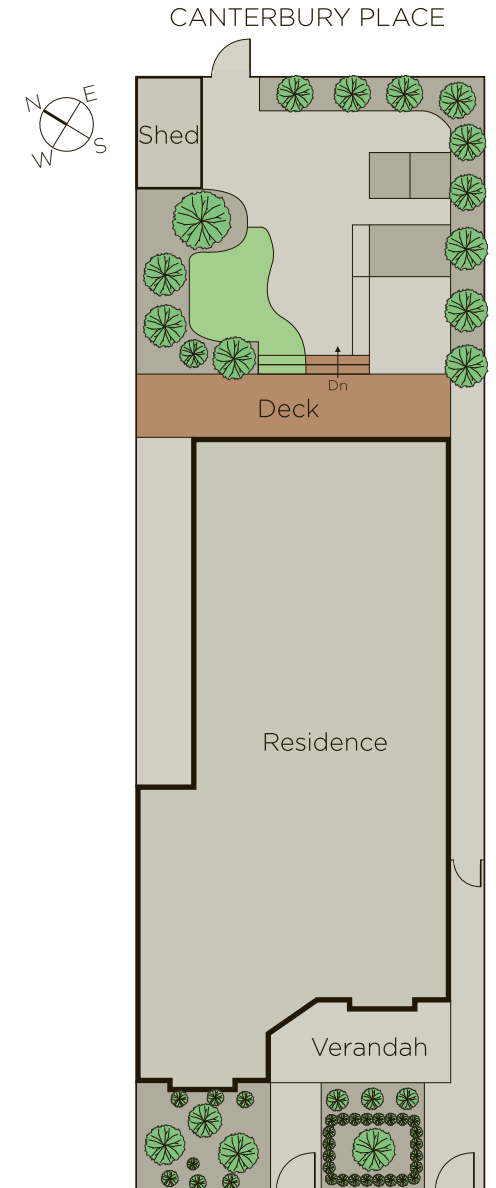
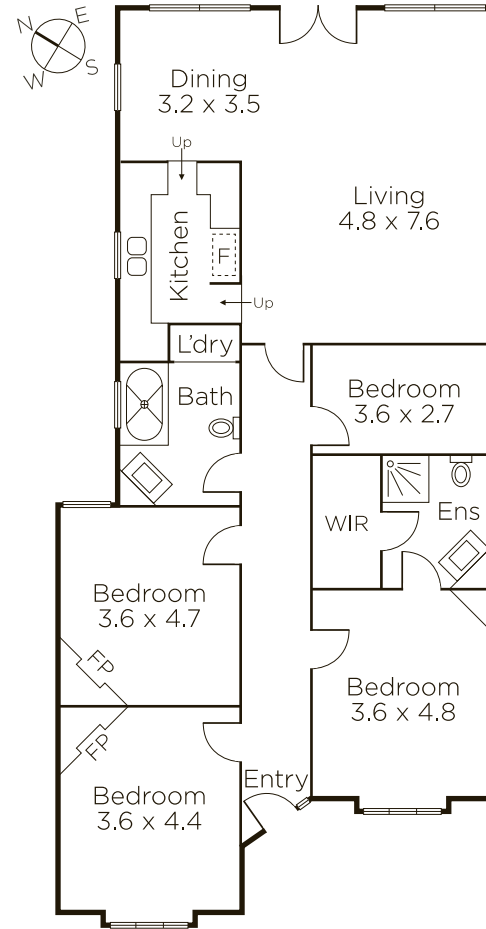
Auction Saturday 29th April at 11.30am

Michael Paproth 0488 300 800

Adrian Wood 0404 861 508

101 Dundas Place Albert Park
marshallwhite.com.au


MARSHALLWHITE



Disclaimer: Information provided is believed to be accurate as at the date of printing, no responsibility is taken for any errors or omissions. It is your responsibility to obtain independent, professional advice. Personal information collected from you is for security purposes and to contact you should the property sell prior to auction. We may use this information to provide you with other real estate services including referrals to authorised financial services' providers. Visit our website at www.marshallwhite.com.au for our privacy policy.