



MARSHALLWHITE

1/23 May Park Avenue  
Ashwood



## Contemporary Design, Lifestyle Location

This recently completed three bedroom town residence encapsulates considerable family appeal only moments from Ashburton Village's myriad of cafes and boutiques. Two level dimensions are underpinned by impeccable finishes, consistent design elements and stylish clean lines. Rich timber floors flow through inviting open plan living and dining areas as well as a sleek kitchen which is highlighted by stone surfaces and quality appointments. Features include north facing garden with undercover deck, three bathrooms, laundry, reverse cycle A/C units throughout, storage, powder room and two car garage.

1-23mayparkavenue-ashwood.com

3 3 2

Auction Saturday 23rd June at 10.30am

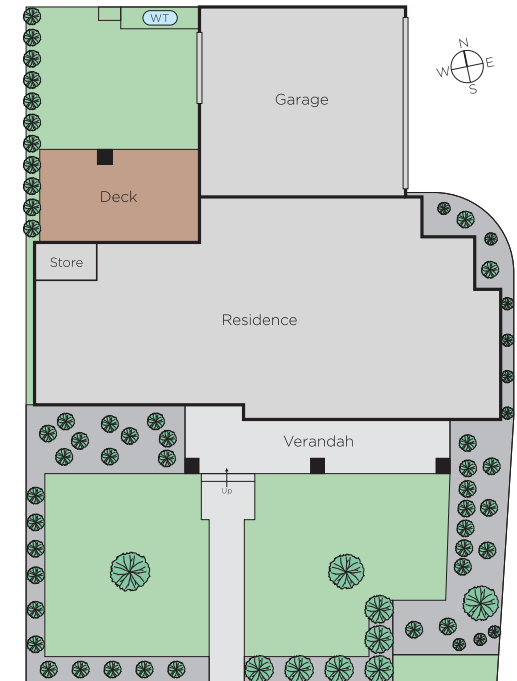
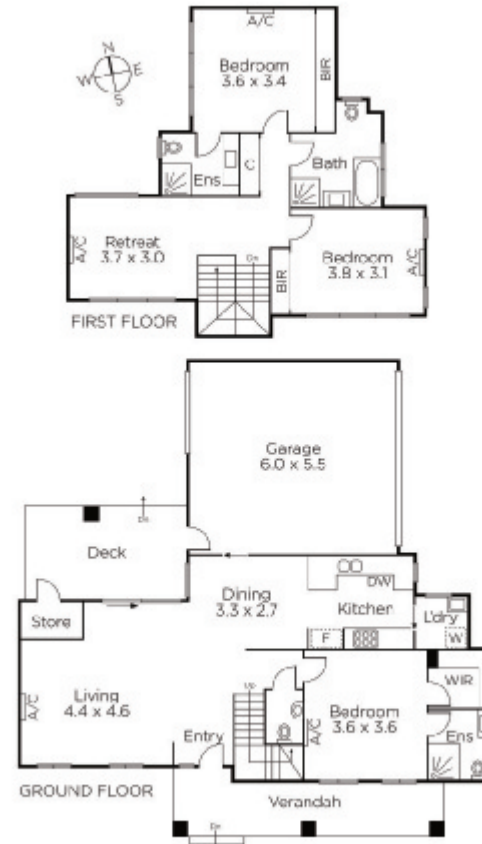
Ash Howarth  
0415 756 764

Shamit Verma  
0401 137 597

Daniel Wheeler  
0411 676 058

  
MARSHALLWHITE

801 Glenferrie Road, Hawthorn



Disclaimer: Information provided is believed to be accurate as at the date of printing, no responsibility is taken for any errors or omissions. It is your responsibility to obtain independent, professional advice. Personal information collected from you is for security purposes and to contact you should the property sell prior to auction. We may use this information to provide you with other real estate services including referrals to authorised financial services providers. Visit our website at [www.marshallwhite.com.au](http://www.marshallwhite.com.au) for our privacy policy.